

SUCO Product Overview

Pressure Monitoring & Transmission Technology

The Suco logo is a stylized, white, cursive script of the word "Suco" set against a red vertical bar on the right edge of the page.The text "Suco" is written in a large, white, cursive font, with "an overview" in a smaller, white, sans-serif font below it. The background is a blue gradient with technical drawings and images of pressure sensors.

www.suco.de

Mechanical Pressure Switches

Electronic Pressure Switches

Pressure Transmitters

Electronic Pressure Sensors

Transmission Technology

Mechanical Pressure Switches

Pressure Switches with integrated connectors

NO/NC/Changeover
IP 67 (up to IP6K9K)
Highest efficiency
by plug and control
connectors
Various connector
versions available



Hex 24

Robust, compact design
at an attractive price in many
different variants
Overpressure safety
up to 600 bar
Set point comfortably
adjustable in pressure
ranges from 0 – 150 bar



Hex 27

Proven Pressure Switches
with changeover
contacts up to 250 V
Adjustable set point
from 0 – 400 bar
Adjustable hysteresis
Numerous versions
in different materials
available



Ready Wired Pressure Switches

Nearly all our hex 24
and hex 27 switches
can be customized
as ready wired
switches to come
with different
cable lengths and
connectors to suit
your specific needs



A/F 30

Our longest established
robust pressure switches
with flange or thread
connection for
easy installation
High precision
in set point ranges
up to 400 bar



Vacuum

Easy to adjust vacuum
switches with outstanding
overpressure safety
Available as NO, NC
or changeover contacts
Set point adjustable
in vacuum of 100 mbar
to 950 mbar



Atex Pressure Switches

Intrinsically safe pressure switches
for applications in ATEX zones
1 (Gas- type 0165)
22 (Dust- type 034X)
Set point adjustable
from 0 – 400 bar
even whilst in operation



Accessories

Various protective caps
and thread adapters
Socket devices
Ready wired mating
connectors
Other options and
customised versions
available on request



Electronic Pressure Switches and Pressure Transmitters

0520

Precise electronic pressure switch with ceramic measuring cell for pressure ranges up to 250 bar

Hysteresis adjustable between 2% and 95%

Adjustable by user in the application without programming requirements



053X

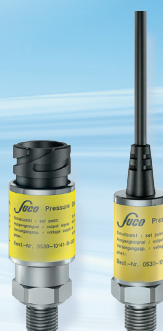
Electronic pressure switch with outstanding accuracy with SoS sensor technology

One output, factory-set switching points

4times overpressure safety

Excellent temperature and long term stability

Various connectors and threads available



054X

Electronic pressure switch with outstanding accuracy with SoS sensor technology

Two outputs, factory-set switching points

4times overpressure safety

Excellent temperature and long term stability

Various connectors and threads available



0570

Electronic pressure switch with programming menu and display

Ceramic measuring cell for pressure ranges up to 400 bar

Two adjustable set points plus additional 4 – 20 mA analogue output

Max pressure memory

Code protected key pad lock etc.



06XX in 303 Stainless steel

Pressure transmitter with oil filled sensor for vacuum and pressure ranges up to 100 bar.

Wetted parts in stainless steel

Ratio metric, current and voltage outputs

Various connectors and threads available

Especially suitable for oxygen



06XX in 316L Stainless steel

Technical data as version 06XX in SS 303, but wetted parts and housing made of 316L stainless steel

Especially for sea water, medical applications etc.



07XX

Pressure Transmitter with outstanding accuracy with SoS sensor technology

4times overpressure safety

Excellent temperature and long term stability

Ratiometric, current and voltage outputs

Various connectors and thread types available



Transmitter Display

Plug on display

For output signals 4 – 20 mA

Option with switching output

Loop powered – no extra power supply required



Electronic Pressure Sensors

HI 20XX High Precision Sensor

Accuracy $\pm 0.1\%$ FS max. typ. BFSL
 With SoS sensor technology
 Pressure ranges from 0 – 500 mbar
 to 0 – 1.500 bar
 Zero and FS-Offset adjustable
 by customer
 Options include Atex versions



HP10XX / HP11XX High Pressure Sensor

Pressure ranges 0 – 400 bar
 to 0 – 4.000 bar
 Different output signals possible
 Temperature range up to $+125^\circ\text{C}$
 Options include Atex versions



LP 10XX Low Pressure Sensor

0 – 50 mbar to 0 – 1.000 mbar
 For very low pressure ranges
 with highest accuracy
 Available in all typical output signals
 Zero and FS-Offset adjustable
 by customer



Differential Pressure Sensor

PR3200 – Differential pressure
 500 mbar – 200 bar
 Suitable for high line pressure
 Line pressure can be applied and
 be measured from both sides
 PR3202 – Differential pressure
 5 mbar – 1.000 mbar for very low
 differential pressure



HI 22XX/PR3860 High Temperature Pressure Sensor for media and ambient temperature up to 200°C

With SoS sensor technology
 Pressure ranges from 0 – 1 bar
 to 0 – 1.500 bar
 Suitable for high temperature
 applications



PR3800/3850 Hygienic/Flush Diaphragm Pressure Sensor

Thickfilm technology on Stainless steel
 Flush diaphragm in 316 or 316L available
 Pressure ranges 0 – 200 mbar to
 0 – 1.000 bar and media temperature
 up to 250°C
 Options include Atex versions
 Various process connections available



PR 34XX Submersible Pressure Sensor

0 – 5 mWS to 0 – 500 mWS
 Slim design in stainless steel 316L housing,
 product specific
 Excellent media compatibility
 Options include Atex versions



GS4200 USB Sensor

With SoS sensor technology for
 pressure ranges up to 4.000 bar
 Power supply and data logging
 via USB connection and PC
 Comes with data logging
 software
 Easy process integration
 with driver software



Transmission Technology

Centrifugal Brakes

SUCO centrifugal brakes automatically limit the maximum RPM of a shaft, so providing protection against over speed, without necessitating external controls.

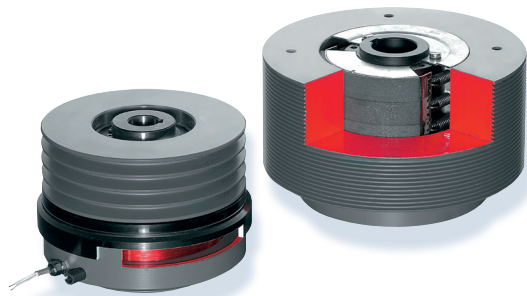
SUCO can provide 'specials' based on their modular range of brakes.

SUCO centrifugal brakes are very compact which facilitates inclusion in new transmission designs and 'Retro fitting' (e.g. between motor and gearbox).

They are almost maintenance free and can be sized to work as an emergency brake or for continuous use. (e.g. frequent personnel descent control).

Torque ranges from 0.5 – 2.000 Nm

Typical Operating speed 300 – 4.000 RPM



Centrifugal Clutches

SUCO Centrifugal Clutches allow a soft load free start from rest, automatically engaging as the speed increases.

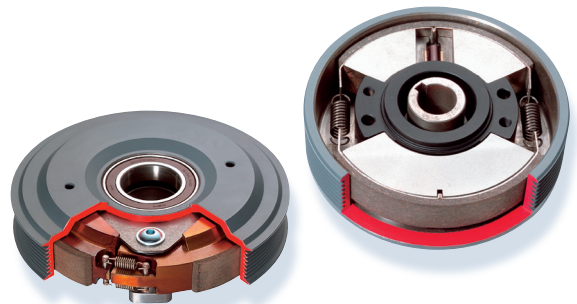
SUCO manufacture four basic designs comprising:

2 shoe with servo engagement, 2 shoe pin drive, 3 shoe pin drive and 3 shoe with servo engagement and integral shock absorbing rubber bushes.

All SUCO clutches are almost service free but easy to overhaul when required.

Torque ranges from 0.5 – 2.000 Nm

Typical operating speed 300 – 4.000 RPM



Electromagnetic Clutches and Brakes

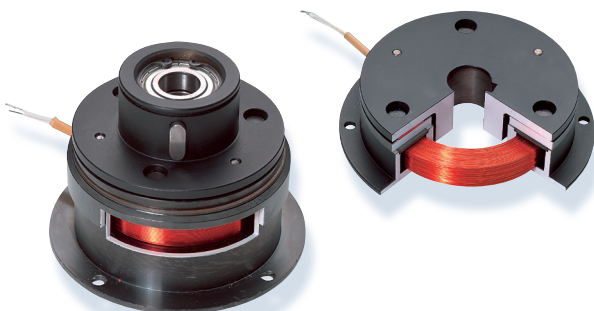
Our know how and experience of more than 75 years, combined with our modern machining facilities allow us to make individually designed electromagnetic clutches and brakes, even in small quantities.

When combined with our centrifugal clutches we can provide unique solutions for special applications.

Torque ranges from 1 – 280 Nm

Operating speed 0 – 10.000 RPM

Power Supply: 6, 12, 24, 48, 190 VDC



Security Brake for Small Wind Turbines

We have developed a security brake especially for small wind turbines up to 30 kW. In the event of the system rotating too quickly, the brake brings the turbine smoothly to a stand still and automatically restarts after a rest period.

The system works independently, without external energy or signals. We can "tailor" our product to suit your application to arrive at a safe and service free installation.

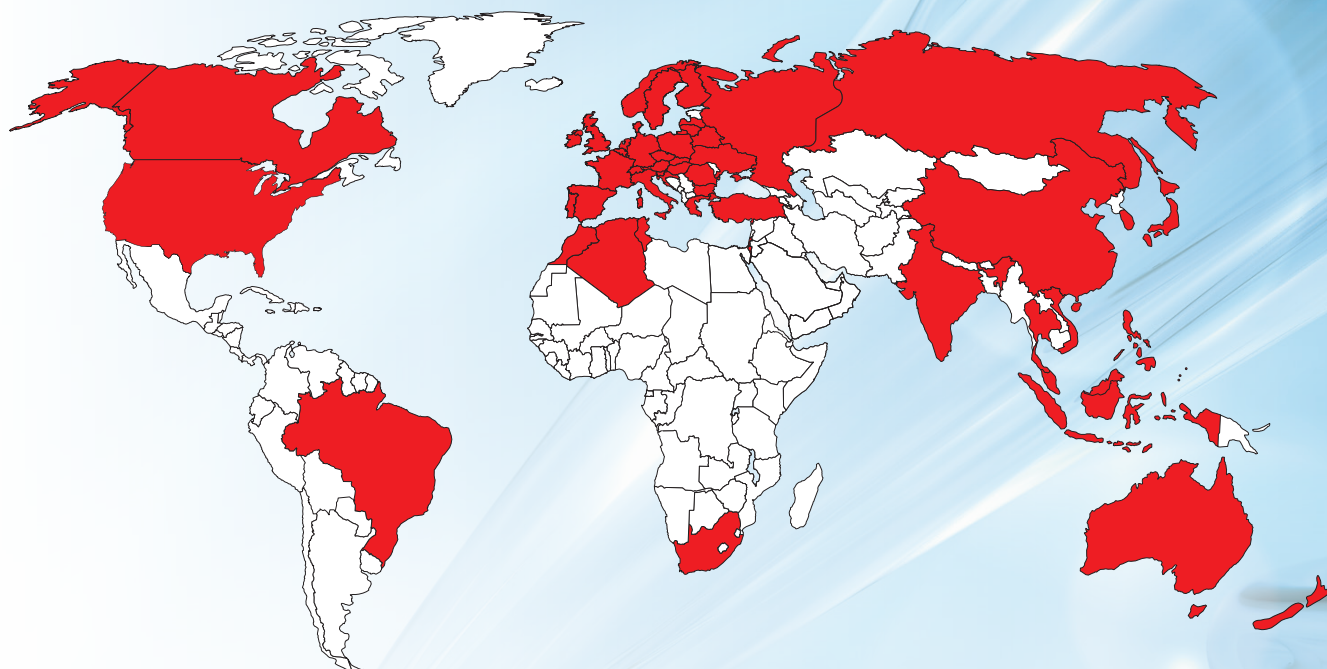
Alternatively we also offer versions with manual reset. This patented SUCO ZERO system can be applied to other applications such as working platforms and lifts.



Pressure Monitoring Systems and Transmission Technology

Our complete product range and sales network
can be found online or in our catalogues.

Contact us or go online now.



SUCO Robert Scheuffele GmbH & Co. KG
Keplerstrasse 12-14
74321 Bietigheim-Bissingen
Deutschland / Germany

Phone: + 49-7142-597-0
Fax: + 49-7142-980151
E-Mail: info@suco.de

www.suco.de



Your SUCO-Partner:

