



- 17 ONE-TOUCH FITTINGS
- 58 COMPACT ONE-TOUCH FITTINGS
- 76 SPEED CONTROLLERS
- 82 ROTARY JOINTS
- 90 STOP FITTINGS
- 96 CHECK VALVES
- 102 BALL VALVES
- 110 MAIN BLOCKS
- 116 HAND VALVES / HAND SLIDE VALVES
- 124 TWO-TOUCH FITTINGS
- 130 SILENCERS
- 142 AIR GUN
- 146 TUBE SERIES
- 154 ACE COUPLER
- 158 COMPACT ACE COUPLER
- 160 MINOR COUPLER
- 166 HP COUPLER
- 168 MOLD COUPLER
- 172 LIGHT COUPLER

Main Plant & head office #1045, Wolam-Dong, Dalseo-Gu, Daegu, Korea TEL: 82 53 583 5200 FAX: 82 53 583 5208 E-mail: sang-a@sanga2000.com
 Seoul office #60-24, Gasan-Dong, Geumcheon-Gu, Seoul, Korea TEL: 82 2 2635 4243 FAX: 82 2 2672 4657 E-mail: seoul@sanga2000.com
 Pusan office #578, Gwaebop-Dong, Sasang-Gu, Pusan, Korea TEL: 82 51 319 4231 FAX: 82 51 319 4232 E-mail: pusan@sanga2000.com
 Daegu office #1045, Wolam-Dong, Dalseo-Gu, Daegu, Korea TEL: 82 53 583 5200 FAX: 82 53 583 5208 E-mail: sang-a@sanga2000.com

ONE-TOUCH FITTINGS

Application

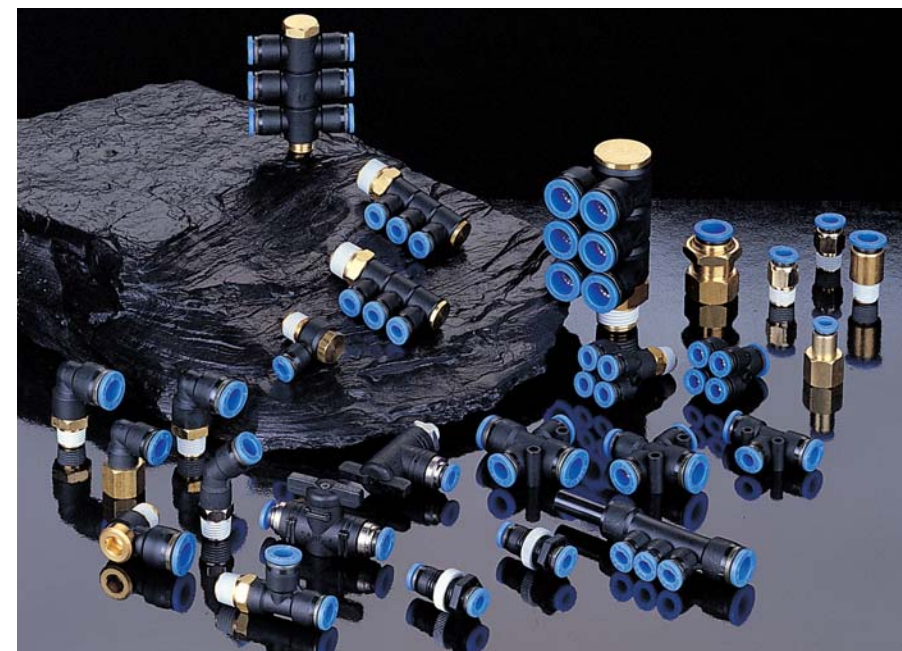
- One-touch joints used in pneumatic piping.
- Used for a wide variety of models to meet all needs.

Feature

- Easy to connect/disconnect tube by one touch.
- PC type is useful for piping in confined space, given its six-angle wrench processing inside.
- Elliptical sleeve makes it possible to apply and remove the tube easily in confined space.
- Fittings are equipped with a Gasket, O-ring and Teflon-Treatment already on the thread.

Specification

| | | |
|--------------------------|---------------------------------|-----------------------------------|
| Fluid | Air (No other gases or liquids) | |
| Working Pressure Range | 0~150PSI | 0~9Kgf/cm ² (0~900kPa) |
| Negative Pressure | -29.5 in Hg | -750mmHg(10Torr) |
| Temperature Range | 32~140 °F | 0 ~ 60 °C |
| Applicable Tube Material | Polyurethane and Nylon | |



Product Code System

PC 08-02

① ② ③ ④

①Type

②Tube Dia(∅D)

| Code | Metric Size | | | | | | Inch Size | | | | | |
|------|-------------|----|----|-----|-----|-----|-----------|-------|------|-------|------|------|
| | 04 | 06 | 08 | 10 | 12 | 16 | 5/32 | 3/16 | 1/4 | 5/16 | 3/8 | 1/2 |
| Dia | ∅4 | ∅6 | ∅8 | ∅10 | ∅12 | ∅16 | ∅5/32 | ∅3/16 | ∅1/4 | ∅5/16 | ∅3/8 | ∅1/2 |

③Thread Size(T)

* Metric Thread & R(PT) Thread

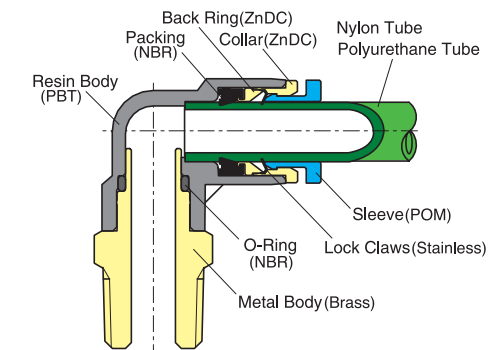
| Code | Metric Size | | | Taper Pipe Thread | | |
|------|-------------|----------|------|-------------------|------|------|
| | M5 | M6 | 01 | 02 | 03 | 04 |
| Size | M5 × 0.8 | M6 × 1.0 | R1/8 | R1/4 | R3/8 | R1/2 |

* Inch Thread (UNF & NPT)

| Code | Unified Fine Thread | | American Standard Taper Pipe Thread | | |
|------|---------------------|--------|-------------------------------------|--------|--------|
| | U10U | N01U | N02U | N03U | N04U |
| Size | 10-32UNF | NPT1/8 | NPT1/4 | NPT3/8 | NPT1/2 |

④U-Hexagon flat-to-flat inch specification (NPT)

Structural Diagram



Case In Use

►POC Model

- The hexagonal hole of the inside body makes it possible to tighten the fitting with a hexagonal wrench.
- A hexagonal wrench must be used due to the round exterior.

►PL Model

- Flexible for directional tube laying given its revolving construction of body (PL and PT type)

►Elliptical Sleeve

- Elliptical sleeve makes it possible to apply and remove the tube easily in confined spaces.

⚠ CAUTION

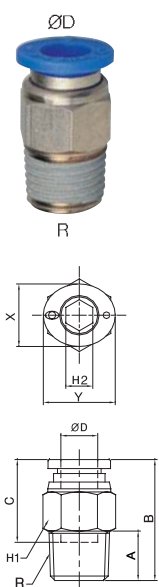
- Be sure to read the "Common Precautions" and the "Using Precautions of Fitting Series" (P6) before using.
- In putting tube on the fitting, be sure to push it deeply into the inside.
- In case of incorrect installation, there is a risk of air leakage or loose tube.

⚠ WARNING

- Be sure to confirm that proper conditions are met(specifications), otherwise there may be air leakage by damage on the fitting body.

PC

Male Straight



MODEL [ØD-T]

| Tube (Metric) - Thread(R) | | | |
|---------------------------|----|------|--|
| MODEL | ØD | R | |
| PC 04-M5 | 4 | M5 | |
| PC 04-M6 | 4 | M6 | |
| PC 04-01 | 4 | R1/8 | |
| PC 04-02 | 4 | R1/4 | |
| PC 04-03 | 4 | R3/8 | |
| PC 06-M5 | 6 | M5 | |
| PC 06-M6 | 6 | M6 | |
| PC 06-01 | 6 | R1/8 | |
| PC 06-02 | 6 | R1/4 | |
| PC 06-03 | 6 | R3/8 | |
| PC 06-04 | 6 | R1/2 | |
| PC 08-01 | 8 | R1/8 | |
| PC 08-02 | 8 | R1/4 | |
| PC 08-03 | 8 | R3/8 | |
| PC 08-04 | 8 | R1/2 | |
| PC 10-01 | 10 | R1/8 | |
| PC 10-02 | 10 | R1/4 | |
| PC 10-03 | 10 | R3/8 | |
| PC 10-04 | 10 | R1/2 | |
| PC 12-01 | 12 | R1/8 | |
| PC 12-02 | 12 | R1/4 | |
| PC 12-03 | 12 | R3/8 | |
| PC 12-04 | 12 | R1/2 | |
| PC 16-03 | 16 | R3/8 | |
| PC 16-04 | 16 | R1/2 | |

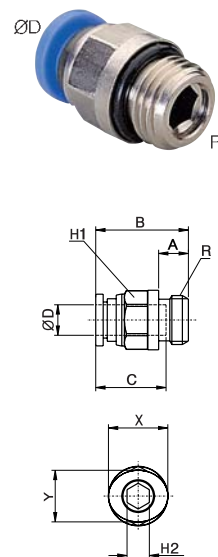
| Tube (Inch) - Thread(R) | | | |
|-------------------------|------|------|--|
| MODEL | ØD | R | |
| PC 5/32-01 | 5/32 | R1/8 | |
| PC 5/32-02 | 5/32 | R1/4 | |
| PC 5/32-03 | 5/32 | R3/8 | |
| PC 3/16-01 | 3/16 | R1/8 | |
| PC 3/16-02 | 3/16 | R1/4 | |
| PC 3/16-03 | 3/16 | R3/8 | |
| PC 1/4-01 | 1/4 | R1/8 | |
| PC 1/4-02 | 1/4 | R1/4 | |
| PC 1/4-03 | 1/4 | R3/8 | |
| PC 1/4-04 | 1/4 | R1/2 | |
| PC 5/16-01 | 5/16 | R1/8 | |
| PC 5/16-02 | 5/16 | R1/4 | |
| PC 5/16-03 | 5/16 | R3/8 | |
| PC 5/16-04 | 5/16 | R1/2 | |
| PC 3/8-01 | 3/8 | R1/8 | |
| PC 3/8-02 | 3/8 | R1/4 | |
| PC 3/8-03 | 3/8 | R3/8 | |
| PC 3/8-04 | 3/8 | R1/2 | |
| PC 1/2-01 | 1/2 | R1/8 | |
| PC 1/2-02 | 1/2 | R1/4 | |
| PC 1/2-03 | 1/2 | R3/8 | |
| PC 1/2-04 | 1/2 | R1/2 | |

| Tube (Inch) - Thread (NPT) | | | |
|----------------------------|------|-----------|--|
| MODEL | ØD | R | |
| PC 5/32-U10U | 5/32 | UNF10 *32 | |
| PC 5/32-N01U | 5/32 | NPT1/8 | |
| PC 5/32-N02U | 5/32 | NPT1/4 | |
| PC 5/32-N03U | 5/32 | NPT3/8 | |
| PC 3/16-U10U | 3/16 | UNF10 *32 | |
| PC 3/16-N01U | 3/16 | NPT1/8 | |
| PC 3/16-N02U | 3/16 | NPT1/4 | |
| PC 3/16-N03U | 3/16 | NPT3/8 | |
| PC 1/4-U10U | 1/4 | UNF10 *32 | |
| PC 1/4-N01U | 1/4 | NPT1/8 | |
| PC 1/4-N02U | 1/4 | NPT1/4 | |
| PC 1/4-N03U | 1/4 | NPT3/8 | |
| PC 1/4-N04U | 1/4 | NPT1/2 | |
| PC 5/16-N01U | 5/16 | NPT1/8 | |
| PC 5/16-N02U | 5/16 | NPT1/4 | |
| PC 5/16-N03U | 5/16 | NPT3/8 | |
| PC 5/16-N04U | 5/16 | NPT1/2 | |
| PC 3/8-N01U | 3/8 | NPT1/8 | |
| PC 3/8-N02U | 3/8 | NPT1/4 | |
| PC 3/8-N03U | 3/8 | NPT3/8 | |
| PC 3/8-N04U | 3/8 | NPT1/2 | |
| PC 1/2-N01U | 1/2 | NPT1/8 | |
| PC 1/2-N02U | 1/2 | NPT1/4 | |
| PC 1/2-N03U | 1/2 | NPT3/8 | |
| PC 1/2-N04U | 1/2 | NPT1/2 | |

*Hexagonal wrench may be used for a proper tightening.

PC-G

Male Straight

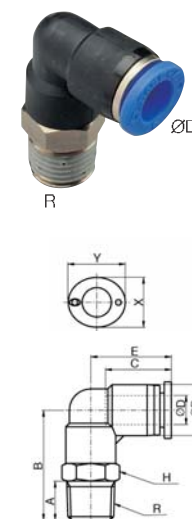


MODEL [ØD-T]

| Tube (Metric) - Thread(G) | | | |
|---------------------------|----|------|--|
| MODEL | ØD | R | |
| PC 04-G01 | 4 | G1/8 | |
| PC 04-G02 | 4 | G1/4 | |
| PC 04-G03 | 4 | G3/8 | |
| PC 06-G01 | 6 | G1/8 | |
| PC 06-G02 | 6 | G1/4 | |
| PC 06-G03 | 6 | G3/8 | |
| PC 06-G04 | 6 | G1/2 | |
| PC 08-G01 | 8 | G1/8 | |
| PC 08-G02 | 8 | G1/4 | |
| PC 08-G03 | 8 | G3/8 | |
| PC 08-G04 | 8 | G1/2 | |
| PC 10-G01 | 10 | G1/8 | |
| PC 10-G02 | 10 | G1/4 | |
| PC 10-G03 | 10 | G3/8 | |
| PC 10-G04 | 10 | G1/2 | |
| PC 12-G01 | 12 | G1/8 | |
| PC 12-G02 | 12 | G1/4 | |
| PC 12-G03 | 12 | G3/8 | |
| PC 12-G04 | 12 | G1/2 | |
| PC 16-G03 | 16 | G3/8 | |
| PC 16-G04 | 16 | G1/2 | |

PL

Male Elbow



MODEL [ØD-T]

| Tube (Metric) - Thread(R) | | | |
|---------------------------|----|------|--|
| MODEL | ØD | R | |
| PL 04-M5 | 4 | M5 | |
| PL 04-M6 | 4 | M6 | |
| PL 04-01 | 4 | R1/8 | |
| PL 04-02 | 4 | R1/4 | |
| PL 04-03 | 4 | R3/8 | |
| PL 06-M5 | 6 | M5 | |
| PL 06-M6 | 6 | M6 | |
| PL 06-01 | 6 | R1/8 | |
| PL 06-02 | 6 | R1/4 | |
| PL 06-03 | 6 | R3/8 | |
| PL 06-04 | 6 | R1/2 | |
| PL 08-01 | 8 | R1/8 | |
| PL 08-02 | 8 | R1/4 | |
| PL 08-03 | 8 | R3/8 | |
| PL 08-04 | 8 | R1/2 | |
| PL 10-01 | 10 | R1/8 | |
| PL 10-02 | 10 | R1/4 | |
| PL 10-03 | 10 | R3/8 | |
| PL 10-04 | 10 | R1/2 | |
| PL 12-01 | 12 | R1/8 | |
| PL 12-02 | 12 | R1/4 | |
| PL 12-03 | 12 | R3/8 | |
| PL 12-04 | 12 | R1/2 | |
| PL 16-03 | 16 | R3/8 | |
| PL 16-04 | 16 | R1/2 | |

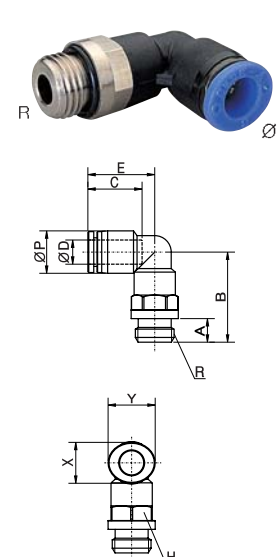
| Tube (Inch) - Thread(R) | | | |
|-------------------------|------|------|--|
| MODEL | ØD | R | |
| PL 5/32-R01 | 5/32 | R1/8 | |
| PL 5/32-R02 | 5/32 | R1/4 | |
| PL 5/32-R03 | 5/32 | R3/8 | |
| PL 3/16-R01 | 3/16 | R1/8 | |
| PL 3/16-R02 | 3/16 | R1/4 | |
| PL 3/16-R03 | 3/16 | R3/8 | |
| PL 1/4-R01 | 1/4 | R1/8 | |
| PL 1/4-R02 | 1/4 | R1/4 | |
| PL 1/4-R03 | 1/4 | R3/8 | |
| PL 1/4-R04 | 1/4 | R1/2 | |
| PL 5/16-R01 | 5/16 | R1/8 | |
| PL 5/16-R02 | 5/16 | R1/4 | |
| PL 5/16-R03 | 5/16 | R3/8 | |
| PL 5/16-R04 | 5/16 | R1/2 | |
| PL 3/8-R01 | 3/8 | R1/8 | |
| PL 3/8-R02 | 3/8 | R1/4 | |
| PL 3/8-R03 | 3/8 | R3/8 | |
| PL 3/8-R04 | 3/8 | R1/2 | |
| PL 1/2-R01 | 1/2 | R1/8 | |
| PL 1/2-R02 | 1/2 | R1/4 | |
| PL 1/2-R03 | 1/2 | R3/8 | |
| PL 1/2-R04 | 1/2 | R1/2 | |

| Tube (Inch) - Thread (NPT) | | | |
|----------------------------|------|-----------|--|
| MODEL | ØD | R | |
| PL 5/32-U10U | 5/32 | UNF10 *32 | |
| PL 5/32-N01U | 5/32 | NPT1/8 | |
| PL 5/32-N02U | 5/32 | NPT1/4 | |
| PL 5/32-N03U | 5/32 | NPT3/8 | |
| PL 3/16-U10U | 3/16 | UNF10 *32 | |
| PL 3/16-N01U | 3/16 | NPT1/8 | |
| PL 3/16-N02U | 3/16 | NPT1/4 | |
| PL 3/16-N03U | 3/16 | NPT3/8 | |
| PL 1/4-U10U | 1/4 | UNF10 *32 | |
| PL 1/4-N01U | 1/4 | NPT1/8 | |
| PL 1/4-N02U | 1/4 | NPT1/4 | |
| PL 1/4-N03U | 1/4 | NPT3/8 | |
| PL 1/4-N04U | 1/4 | NPT1/2 | |
| PL 5/16-N01U | 5/16 | NPT1/8 | |
| PL 5/16-N02U | 5/16 | NPT1/4 | |
| PL 5/16-N03U | 5/16 | NPT3/8 | |
| PL 5/16-N04U | 5/16 | NPT1/2 | |
| PL 3/8-N01U | 3/8 | NPT1/8 | |
| PL 3/8-N02U | 3/8 | NPT1/4 | |
| PL 3/8-N03U | 3/8 | NPT3/8 | |
| PL 3/8-N04U | 3/8 | NPT1/2 | |
| PL 1/2-N01U | 1/2 | NPT1/8 | |
| PL 1/2-N02U | 1/2 | NPT1/4 | |
| PL 1/2-N03U | 1/2 | NPT3/8 | |
| PL 1/2-N04U | 1/2 | NPT1/2 | |

*Rotating body construction after a proper installation.

PL-G

Male Elbow

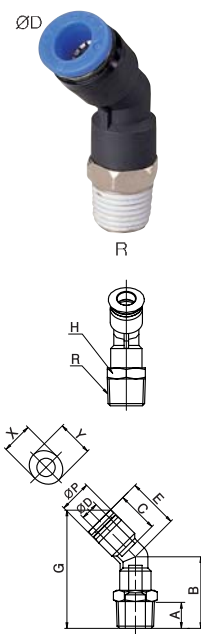


MODEL [ØD-T]

| Tube (Metric) - Thread(G) | | | |
|---------------------------|----|------|--|
| MODEL | ØD | R | |
| PL 04-G01 | 4 | G1/8 | |
| PL 04-G02 | 4 | G1/4 | |
| PL 04-G03 | 4 | G3/8 | |
| PL 06-G01 | 6 | G1/8 | |
| PL 06-G02 | 6 | G1/4 | |
| PL 06-G03 | 6 | G3/8 | |
| PL 06-G04 | 6 | G1/2 | |
| PL 08-G01 | 8 | G1/8 | |
| PL 08-G02 | 8 | G1/4 | |
| PL 08-G03 | 8 | G3/8 | |
| PL 08-G04 | 8 | G1/2 | |
| PL 10-G01 | 10 | G1/8 | |
| PL 10-G02 | 10 | G1/4 | |
| PL 10-G03 | 10 | G3/8 | |
| PL 10-G04 | 10 | G1/2 | |
| PL 12-G01 | 12 | G1/8 | |
| PL 12-G02 | 12 | G1/4 | |
| PL 12-G03 | 12 | G3/8 | |
| PL 12-G04 | 12 | G1/2 | |
| PL 16-G03 | 16 | G3/8 | |
| PL 16-G04 | 16 | G1/2 | |

PL45

Male 45° Elbow



MODEL [ØD-T]

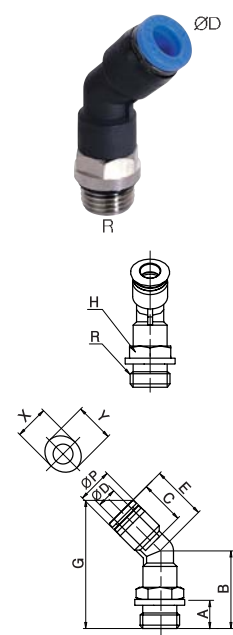
| Tube (Metric) - Thread(R) | | | |
|---------------------------|----|------|--|
| MODEL | ØD | R | |
| PL45 04-M5 | 4 | M5 | |
| PL45 04-M6 | 4 | M6 | |
| PL45 04-01 | 4 | R1/8 | |
| PL45 04-02 | 4 | R1/4 | |
| PL45 04-03 | 4 | R3/8 | |
| PL45 06-M5 | 6 | M5 | |
| PL45 06-M6 | 6 | M6 | |
| PL45 06-01 | 6 | R1/8 | |
| PL45 06-02 | 6 | R1/4 | |
| PL45 06-03 | 6 | R3/8 | |
| PL45 06-04 | 6 | R1/2 | |
| PL45 08-01 | 8 | R1/8 | |
| PL45 08-02 | 8 | R1/4 | |
| PL45 08-03 | 8 | R3/8 | |
| PL45 08-04 | 8 | R1/2 | |
| PL45 10-01 | 10 | R1/8 | |
| PL45 10-02 | 10 | R1/4 | |
| PL45 10-03 | 10 | R3/8 | |
| PL45 10-04 | 10 | R1/2 | |
| PL45 12-01 | 12 | R1/8 | |
| PL45 12-02 | 12 | R1/4 | |
| PL45 12-03 | 12 | R3/8 | |
| PL45 12-04 | 12 | R1/2 | |

| Tube (Inch) - Thread(R) | | | |
|-------------------------|------|------|--|
| MODEL | ØD | R | |
| PL45 5/32-R01 | 5/32 | R1/8 | |
| PL45 5/32-R02 | 5/32 | R1/4 | |
| PL45 5/32-R03 | 5/32 | R3/8 | |
| PL45 3/16-R01 | 3/16 | R1/8 | |
| PL45 3/16-R02 | 3/16 | R1/4 | |
| PL45 3/16-R03 | 3/16 | R3/8 | |
| PL45 1/4-R01 | 1/4 | R1/8 | |
| PL45 1/4-R02 | 1/4 | R1/4 | |
| PL45 1/4-R03 | 1/4 | R3/8 | |
| PL45 1/4-R04 | 1/4 | R1/2 | |
| PL45 5/16-R01 | 5/16 | R1/8 | |
| PL45 5/16-R02 | 5/16 | R1/4 | |
| PL45 5/16-R03 | 5/16 | R3/8 | |
| PL45 5/16-R04 | 5/16 | R1/2 | |
| PL45 3/8-R01 | 3/8 | R1/8 | |
| PL45 3/8-R02 | 3/8 | R1/4 | |
| PL45 3/8-R03 | 3/8 | R3/8 | |
| PL45 3/8-R04 | 3/8 | R1/2 | |
| PL45 1/2-R01 | 1/2 | R1/8 | |
| PL45 1/2-R02 | 1/2 | R1/4 | |
| PL45 1/2-R03 | 1/2 | R3/8 | |
| PL45 1/2-R04 | 1/2 | R1/2 | |

| Tube (Inch) - Thread (NPT) | | | |
|----------------------------|------|-----------|--|
| MODEL | ØD | R | |
| PL45 5/32-U10U | 5/32 | UNF10 *32 | |
| PL45 5/32-N01U | 5/32 | NPT1/8 | |
| PL45 5/32-N02U | 5/32 | NPT1/4 | |
| PL45 5/32-N03U | 5/32 | NPT3/8 | |
| PL45 3/16-U10U | 3/16 | UNF10 *32 | |
| PL45 3/16-N01U | 3/16 | NPT1/8 | |
| PL45 3/16-N02U | 3/16 | NPT1/4 | |
| PL45 3/16-N03U | 3/16 | NPT3/8 | |
| PL45 1/4-U10U | 1/4 | UNF10 *32 | |
| PL45 1/4-N01U | 1/4 | NPT1/8 | |
| PL45 1/4-N02U | 1/4 | NPT1/4 | |
| PL45 1/4-N03U | 1/4 | NPT3/8 | |
| PL45 1/4-N04U | 1/4 | NPT1/2 | |
| PL45 5/16-N01U | 5/16 | NPT1/8 | |
| PL45 5/16-N02U | 5/16 | NPT1/4 | |
| PL45 5/16-N03U | 5/16 | NPT3/8 | |
| PL45 5/16-N04U | 5/16 | NPT1/2 | |
| PL45 3/8-N01U | 3/8 | NPT1/8 | |
| PL45 3/8-N02U | 3/8 | NPT1/4 | |
| PL45 3/8-N03U | 3/8 | NPT3/8 | |
| PL45 3/8-N04U | 3/8 | NPT1/2 | |
| PL45 1/2-N01U | 1/2 | NPT1/8 | |
| PL45 1/2-N02U | 1/2 | NPT1/4 | |
| PL45 1/2-N03U | 1/2 | NPT3/8 | |
| PL45 1/2-N04U | 1/2 | NPT1/2 | |

PL45-G

Male 45° Elbow

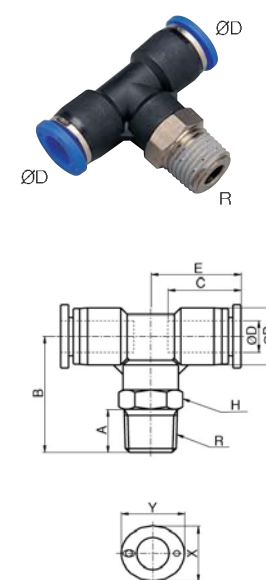


MODEL [ØD-T]

| Tube (Metric) - Thread(G) | | | |
|---------------------------|----|------|--|
| MODEL | ØD | R | |
| PL45 04-G01 | 4 | G1/8 | |
| PL45 04-G02 | 4 | G1/4 | |
| PL45 04-G03 | 4 | G3/8 | |
| PL45 06-G01 | 6 | G1/8 | |
| PL45 06-G02 | 6 | G1/4 | |
| PL45 06-G03 | 6 | G3/8 | |
| PL45 06-G04 | 6 | G1/2 | |
| PL45 08-G01 | 8 | G1/8 | |
| PL45 08-G02 | 8 | G1/4 | |
| PL45 08-G03 | 8 | G3/8 | |
| PL45 08-G04 | 8 | G1/2 | |
| PL45 10-G01 | 10 | G1/8 | |
| PL45 10-G02 | 10 | G1/4 | |
| PL45 10-G03 | 10 | G3/8 | |
| PL45 10-G04 | 10 | G1/2 | |
| PL45 12-G01 | 12 | G1/8 | |
| PL45 12-G02 | 12 | G1/4 | |
| PL45 12-G03 | 12 | G3/8 | |
| PL45 12-G04 | 12 | G1/2 | |

PT

Male Branch Tee



MODEL [ØD-T]

| Tube (Metric) - Thread(R) | | | |
|---------------------------|----|------|--|
| MODEL | ØD | R | |
| PT 04-M5 | 4 | M5 | |
| PT 04-M6 | 4 | M6 | |
| PT 04-01 | 4 | R1/8 | |
| PT 04-02 | 4 | R1/4 | |
| PT 04-03 | 4 | R3/8 | |
| PT 06-M5 | 6 | M5 | |
| PT 06-M6 | 6 | M6 | |
| PT 06-01 | 6 | R1/8 | |
| PT 06-02 | 6 | R1/4 | |
| PT 06-03 | 6 | R3/8 | |
| PT 06-04 | 6 | R1/2 | |
| PT 08-01 | 8 | R1/8 | |
| PT 08-02 | 8 | R1/4 | |
| PT 08-03 | 8 | R3/8 | |
| PT 08-04 | 8 | R1/2 | |
| PT 10-01 | 10 | R1/8 | |
| PT 10-02 | 10 | R1/4 | |
| PT 10-03 | 10 | R3/8 | |
| PT 10-04 | 10 | R1/2 | |
| PT 12-01 | 12 | R1/8 | |
| PT 12-02 | 12 | R1/4 | |
| PT 12-03 | 12 | R3/8 | |
| PT 12-04 | 12 | R1/2 | |
| PT 16-03 | 16 | R3/8 | |
| PT 16-04 | 16 | R1/2 | |

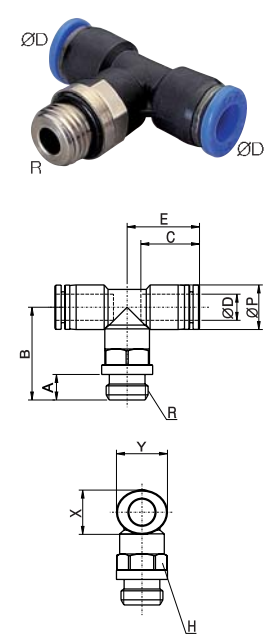
| Tube (Inch) - Thread(R) | | | |
|-------------------------|------|------|--|
| MODEL | ØD | R | |
| PT 5/32-R01 | 5/32 | R1/8 | |
| PT 5/32-R02 | 5/32 | R1/4 | |
| PT 5/32-R03 | 5/32 | R3/8 | |
| PT 1/4-R01 | 1/4 | R1/8 | |
| PT 1/4-R02 | 1/4 | R1/4 | |
| PT 1/4-R03 | 1/4 | R3/8 | |
| PT 1/4-R04 | 1/4 | R1/2 | |
| PT 5/16-R01 | 5/16 | R1/8 | |
| PT 5/16-R02 | 5/16 | R1/4 | |
| PT 5/16-R03 | 5/16 | R3/8 | |
| PT 5/16-R04 | 5/16 | R1/2 | |
| PT 3/8-R01 | 3/8 | R1/8 | |
| PT 3/8-R02 | 3/8 | R1/4 | |
| PT 3/8-R03 | 3/8 | R3/8 | |
| PT 3/8-R04 | 3/8 | R1/2 | |
| PT 1/2-R01 | 1/2 | R1/8 | |
| PT 1/2-R02 | 1/2 | R1/4 | |
| PT 1/2-R03 | 1/2 | R3/8 | |
| PT 1/2-R04 | 1/2 | R1/2 | |

| Tube (Inch) - Thread (NPT) | | | |
|----------------------------|------|-----------|--|
| MODEL | ØD | R | |
| PT 5/32-U10U | 5/32 | UNF10 *32 | |
| PT 5/32-N01U | 5/32 | NPT1/8 | |
| PT 5/32-N02U | 5/32 | NPT1/4 | |
| PT 5/32-N03U | 5/32 | NPT3/8 | |
| PT 3/16-U10U | 3/16 | UNF10 *32 | |
| PT 3/16-N01U | 3/16 | NPT1/8 | |
| PT 3/16-N02U | 3/16 | NPT1/4 | |
| PT 3/16-N03U | 3/16 | NPT3/8 | |
| PT 1/4-U10U | 1/4 | UNF10 *32 | |
| PT 1/4-N01U | 1/4 | NPT1/8 | |
| PT 1/4-N02U | 1/4 | NPT1/4 | |
| PT 1/4-N03U | 1/4 | NPT3/8 | |
| PT 1/4-N04U | 1/4 | NPT1/2 | |
| PT 5/16-N01U | 5/16 | NPT1/8 | |
| PT 5/16-N02U | 5/16 | NPT1/4 | |
| PT 5/16-N03U | 5/16 | NPT3/8 | |
| PT 5/16-N04U | 5/16 | NPT1/2 | |
| PT 3/8-N01U | 3/8 | NPT1/8 | |
| PT 3/8-N02U | 3/8 | NPT1/4 | |
| PT 3/8-N03U | 3/8 | NPT3/8 | |
| PT 3/8-N04U | 3/8 | NPT1/2 | |
| PT 1/2-N01U | 1/2 | NPT1/8 | |
| PT 1/2-N02U | 1/2 | NPT1/4 | |
| PT 1/2-N03U | 1/2 | NPT3/8 | |
| PT 1/2-N04U | 1/2 | NPT1/2 | |

*Rotating body construction after a proper installation.

PT-G

Male Branch Tee

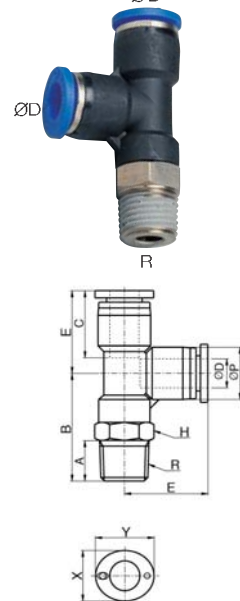


MODEL [ØD-T]

| Tube (Metric) - Thread(G) | | | |
|---------------------------|----|------|--|
| MODEL | ØD | R | |
| PT 04-G01 | 4 | G1/8 | |
| PT 04-G02 | 4 | G1/4 | |
| PT 04-G03 | 4 | G3/8 | |
| PT 06-G01 | 6 | G1/8 | |
| PT 06-G02 | 6 | G1/4 | |
| PT 06-G03 | 6 | G3/8 | |
| PT 06-G04 | 6 | G1/2 | |
| PT 08-G01 | 8 | G1/8 | |
| PT 08-G02 | 8 | G1/4 | |
| PT 08-G03 | 8 | G3/8 | |
| PT 08-G04 | 8 | G1/2 | |
| PT 10-G01 | 10 | G1/8 | |
| PT 10-G02 | 10 | G1/4 | |
| PT 10-G03 | 10 | G3/8 | |
| PT 10-G04 | 10 | G1/2 | |
| PT 12-G01 | 12 | G1/8 | |
| PT 12-G02 | 12 | G1/4 | |
| PT 12-G03 | 12 | G3/8 | |
| PT 12-G04 | 12 | G1/2 | |
| PT 16-G03 | 16 | G3/8 | |
| PT 16-G04 | 16 | G1/2 | |

PST

Male Run Tee $\varnothing D$



MODEL [$\varnothing D$ -T]

| Tube (Metric) - Thread(R) | | | |
|---------------------------|-----------------|------|--|
| MODEL | $\varnothing D$ | R | |
| PST 04-M5 | 4 | M5 | |
| PST 04-M6 | 4 | M6 | |
| PST 04-01 | 4 | R1/8 | |
| PST 04-02 | 4 | R1/4 | |
| PST 04-03 | 4 | R3/8 | |
| PST 06-M5 | 6 | M5 | |
| PST 06-M6 | 6 | M6 | |
| PST 06-01 | 6 | R1/8 | |
| PST 06-02 | 6 | R1/4 | |
| PST 06-03 | 6 | R3/8 | |
| PST 06-04 | 6 | R1/2 | |
| PST 08-01 | 8 | R1/8 | |
| PST 08-02 | 8 | R1/4 | |
| PST 08-03 | 8 | R3/8 | |
| PST 08-04 | 8 | R1/2 | |
| PST 10-01 | 10 | R1/8 | |
| PST 10-02 | 10 | R1/4 | |
| PST 10-03 | 10 | R3/8 | |
| PST 10-04 | 10 | R1/2 | |
| PST 12-01 | 12 | R1/8 | |
| PST 12-02 | 12 | R1/4 | |
| PST 12-03 | 12 | R3/8 | |
| PST 12-04 | 12 | R1/2 | |

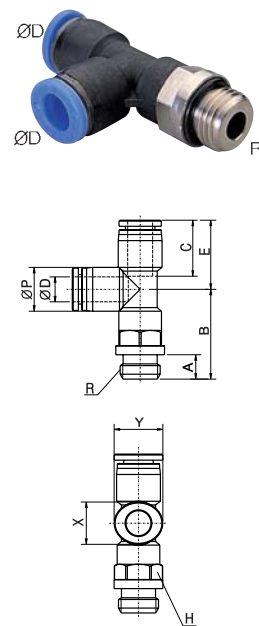
| Tube (Inch) - Thread(R) | | | |
|-------------------------|-----------------|------|--|
| MODEL | $\varnothing D$ | R | |
| PST 5/32-R01 | 5/32 | R1/8 | |
| PST 5/32-R02 | 5/32 | R1/4 | |
| PST 5/32-R03 | 5/32 | R3/8 | |
| PST 1/4-R01 | 1/4 | R1/8 | |
| PST 1/4-R02 | 1/4 | R1/4 | |
| PST 1/4-R03 | 1/4 | R3/8 | |
| PST 5/16-R01 | 5/16 | R1/8 | |
| PST 5/16-R02 | 5/16 | R1/4 | |
| PST 5/16-R03 | 5/16 | R3/8 | |
| PST 5/16-R04 | 5/16 | R1/2 | |
| PST 3/8-R01 | 3/8 | R1/8 | |
| PST 3/8-R02 | 3/8 | R1/4 | |
| PST 3/8-R03 | 3/8 | R3/8 | |
| PST 3/8-R04 | 3/8 | R1/2 | |
| PST 1/2-R02 | 1/2 | R1/4 | |
| PST 1/2-R03 | 1/2 | R3/8 | |
| PST 1/2-R04 | 1/2 | R1/2 | |

| Tube (Inch) - Thread (NPT) | | | |
|----------------------------|-----------------|-----------|--|
| MODEL | $\varnothing D$ | R | |
| PST 5/32-U10U | 5/32 | UNF10 *32 | |
| PST 5/32-N01U | 5/32 | NPT1/8 | |
| PST 5/32-N02U | 5/32 | NPT1/4 | |
| PST 3/16-U10U | 3/16 | UNF10 *32 | |
| PST 3/16-N01U | 3/16 | NPT1/8 | |
| PST 3/16-N02U | 3/16 | NPT1/4 | |
| PST 3/16-N03U | 3/16 | NPT3/8 | |
| PST 1/4-U10U | 1/4 | UNF10 *32 | |
| PST 1/4-N01U | 1/4 | NPT1/8 | |
| PST 1/4-N02U | 1/4 | NPT1/4 | |
| PST 1/4-N03U | 1/4 | NPT3/8 | |
| PST 5/16-N01U | 5/16 | NPT1/8 | |
| PST 5/16-N02U | 5/16 | NPT1/4 | |
| PST 5/16-N03U | 5/16 | NPT3/8 | |
| PST 5/16-N04U | 5/16 | NPT1/2 | |
| PST 3/8-N01U | 3/8 | NPT1/8 | |
| PST 3/8-N02U | 3/8 | NPT1/4 | |
| PST 3/8-N03U | 3/8 | NPT3/8 | |
| PST 3/8-N04U | 3/8 | NPT1/2 | |
| PST 1/2-N02U | 1/2 | NPT1/4 | |
| PST 1/2-N03U | 1/2 | NPT3/8 | |
| PST 1/2-N04U | 1/2 | NPT1/2 | |

*Rotating body construction after a proper installation.

PST-G

Male run Tee

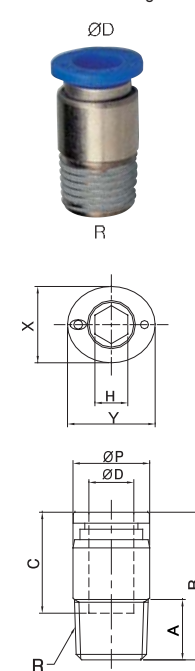


MODEL [$\varnothing D$ -T]

| Tube (Metric) - Thread(G) | | | |
|---------------------------|-----------------|------|--|
| MODEL | $\varnothing D$ | R | |
| PST 04-G01 | 4 | G1/8 | |
| PST 04-G02 | 4 | G1/4 | |
| PST 04-G03 | 4 | G3/8 | |
| PST 06-G01 | 6 | G1/8 | |
| PST 06-G02 | 6 | G1/4 | |
| PST 06-G03 | 6 | G3/8 | |
| PST 06-G04 | 6 | G1/2 | |
| PST 08-G01 | 8 | G1/8 | |
| PST 08-G02 | 8 | G1/4 | |
| PST 08-G03 | 8 | G3/8 | |
| PST 08-G04 | 8 | G1/2 | |
| PST 10-G01 | 10 | G1/8 | |
| PST 10-G02 | 10 | G1/4 | |
| PST 10-G03 | 10 | G3/8 | |
| PST 10-G04 | 10 | G1/2 | |
| PST 12-G01 | 12 | G1/8 | |
| PST 12-G02 | 12 | G1/4 | |
| PST 12-G03 | 12 | G3/8 | |
| PST 12-G04 | 12 | G1/2 | |

POC

Round Male Straight



MODEL [$\varnothing D$ -T]

| Tube (Metric) - Thread(R) | | | |
|---------------------------|-----------------|------|--|
| MODEL | $\varnothing D$ | R | |
| POC 04-M5 | 4 | M5 | |
| POC 04-M6 | 4 | M6 | |
| POC 04-01 | 4 | R1/8 | |
| POC 04-02 | 4 | R1/4 | |
| POC 04-03 | 4 | R3/8 | |
| POC 06-M5 | 6 | M5 | |
| POC 06-M6 | 6 | M6 | |
| POC 06-01 | 6 | R1/8 | |
| POC 06-02 | 6 | R1/4 | |
| POC 06-03 | 6 | R3/8 | |
| POC 08-01 | 8 | R1/8 | |
| POC 08-02 | 8 | R1/4 | |
| POC 08-03 | 8 | R3/8 | |
| POC 08-04 | 8 | R1/2 | |
| POC 10-01 | 10 | R1/8 | |
| POC 10-02 | 10 | R1/4 | |
| POC 10-03 | 10 | R3/8 | |
| POC 10-04 | 10 | R1/2 | |
| POC 12-01 | 12 | R1/8 | |
| POC 12-02 | 12 | R1/4 | |
| POC 12-03 | 12 | R3/8 | |
| POC 12-04 | 12 | R1/2 | |

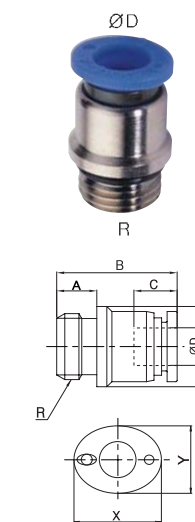
| Tube (Inch) - Thread(R) | | | |
|-------------------------|-----------------|------|--|
| MODEL | $\varnothing D$ | R | |
| POC 1/4-R01 | 1/4 | R1/8 | |
| POC 1/4-R02 | 1/4 | R1/4 | |
| POC 5/16-R01 | 5/16 | R1/8 | |
| POC 5/16-R02 | 5/16 | R1/4 | |
| POC 5/16-R03 | 5/16 | R3/8 | |
| POC 3/8-R02 | 3/8 | R1/4 | |
| POC 3/8-R03 | 3/8 | R3/8 | |
| POC 3/8-R04 | 3/8 | R1/2 | |

| Tube (Inch) - Thread (NPT) | | | |
|----------------------------|-----------------|-----------|--|
| MODEL | $\varnothing D$ | R | |
| POC 5/32-U10U | 5/32 | UNF10 *32 | |
| POC 5/32-N01U | 5/32 | NPT1/8 | |
| POC 5/32-N02U | 5/32 | NPT1/4 | |
| POC 5/32-N03U | 5/32 | NPT3/8 | |
| POC 3/16-U10U | 3/16 | UNF10 *32 | |
| POC 3/16-N01U | 3/16 | NPT1/8 | |
| POC 3/16-N02U | 3/16 | NPT1/4 | |
| POC 1/4-U10U | 1/4 | UNF10 *32 | |
| POC 1/4-N01U | 1/4 | NPT1/8 | |
| POC 1/4-N02U | 1/4 | NPT1/4 | |
| POC 5/16-N01U | 5/16 | NPT1/8 | |
| POC 5/16-N02U | 5/16 | NPT1/4 | |
| POC 5/16-N03U | 5/16 | NPT3/8 | |
| POC 3/8-N01U | 3/8 | NPT1/8 | |
| POC 3/8-N02U | 3/8 | NPT1/4 | |
| POC 3/8-N03U | 3/8 | NPT3/8 | |
| POC 3/8-N04U | 3/8 | NPT1/2 | |
| POC 1/2-N02U | 1/2 | NPT1/4 | |
| POC 1/2-N03U | 1/2 | NPT3/8 | |
| POC 1/2-N04U | 1/2 | NPT1/2 | |

*Hexagonal wrench may be used for a proper tightening.

POC-G

Male run Tee

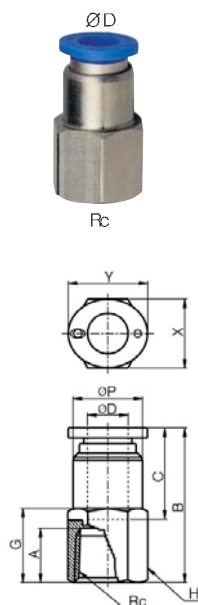


MODEL [$\varnothing D$ -T]

| Tube (Metric) - Thread(G) | | | |
|---------------------------|-----------------|------|--|
| MODEL | $\varnothing D$ | R | |
| POC 04-G01 | 4 | G1/8 | |
| POC 04-G02 | 4 | G1/4 | |
| POC 04-G03 | 4 | G3/8 | |
| POC 06-G01 | 6 | G1/8 | |
| POC 06-G02 | 6 | G1/4 | |
| POC 06-G03 | 6 | G3/8 | |
| POC 08-G01 | 8 | G1/8 | |
| POC 08-G02 | 8 | G1/4 | |
| POC 08-G03 | 8 | G3/8 | |
| POC 08-G04 | 8 | G1/2 | |
| POC 10-G01 | 10 | G1/8 | |
| POC 10-G02 | 10 | G1/4 | |
| POC 10-G03 | 10 | G3/8 | |
| POC 10-G04 | 10 | G1/2 | |
| POC 12-G01 | 12 | G1/8 | |
| POC 12-G02 | 12 | G1/4 | |
| POC 12-G03 | 12 | G3/8 | |
| POC 12-G04 | 12 | G1/2 | |

PCF

Female Straight



MODEL [ØD-T]

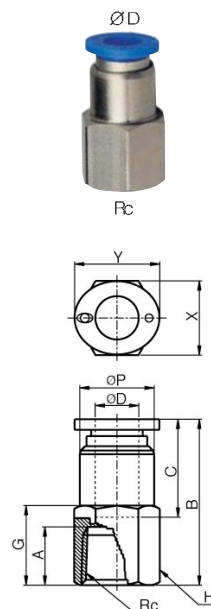
| Tube (Metric) - Thread(R) | | |
|---------------------------|----|-------|
| MODEL | ØD | Rc |
| PCF 04-01 | 4 | Rc1/8 |
| PCF 04-02 | 4 | Rc1/4 |
| PCF 04-03 | 4 | Rc3/8 |
| PCF 06-01 | 6 | Rc1/8 |
| PCF 06-02 | 6 | Rc1/4 |
| PCF 06-03 | 6 | Rc3/8 |
| PCF 08-01 | 8 | Rc1/8 |
| PCF 08-02 | 8 | Rc1/4 |
| PCF 08-03 | 8 | Rc3/8 |
| PCF 08-04 | 8 | Rc1/2 |
| PCF 10-01 | 10 | Rc1/8 |
| PCF 10-02 | 10 | Rc1/4 |
| PCF 10-03 | 10 | Rc3/8 |
| PCF 10-04 | 10 | Rc1/2 |
| PCF 12-02 | 12 | Rc1/4 |
| PCF 12-03 | 12 | Rc3/8 |
| PCF 12-04 | 12 | Rc1/2 |

| Tube (Inch) - Thread(R) | | |
|-------------------------|------|-------|
| MODEL | ØD | Rc |
| PCF 5/32-R01 | 5/32 | Rc1/8 |
| PCF 5/32-R02 | 5/32 | Rc1/4 |
| PCF 5/32-R03 | 5/32 | Rc3/8 |
| PCF 3/16-R01 | 3/16 | Rc1/8 |
| PCF 3/16-R02 | 3/16 | Rc1/4 |
| PCF 1/4-R01 | 1/4 | Rc1/8 |
| PCF 1/4-R02 | 1/4 | Rc1/4 |
| PCF 1/4-R03 | 1/4 | Rc3/8 |
| PCF 5/16-R01 | 5/16 | Rc1/8 |
| PCF 5/16-R02 | 5/16 | Rc1/4 |
| PCF 5/16-R03 | 5/16 | Rc3/8 |
| PCF 5/16-R04 | 5/16 | Rc1/2 |
| PCF 3/8-R01 | 3/8 | Rc1/8 |
| PCF 3/8-R02 | 3/8 | Rc1/4 |
| PCF 3/8-R03 | 3/8 | Rc3/8 |
| PCF 3/8-R04 | 3/8 | Rc1/2 |
| PCF 1/2-R02 | 1/2 | Rc1/4 |
| PCF 1/2-R03 | 1/2 | Rc3/8 |
| PCF 1/2-R04 | 1/2 | Rc1/2 |

| Tube (Inch) - Thread (NPT) | | |
|----------------------------|------|--------|
| MODEL | ØD | Rc |
| PCF 5/32-N01U | 5/32 | NPT1/8 |
| PCF 5/32-N02U | 5/32 | NPT1/4 |
| PCF 3/16-N01U | 3/16 | NPT1/8 |
| PCF 3/16-N02U | 3/16 | NPT1/4 |
| PCF 1/4-N01U | 1/4 | NPT1/8 |
| PCF 1/4-N02U | 1/4 | NPT1/4 |
| PCF 1/4-N03U | 1/4 | NPT3/8 |
| PCF 5/16-N01U | 5/16 | NPT1/8 |
| PCF 5/16-N02U | 5/16 | NPT1/4 |
| PCF 5/16-N03U | 5/16 | NPT3/8 |
| PCF 5/16-N04U | 5/16 | NPT1/2 |
| PCF 3/8-N01U | 3/8 | NPT1/8 |
| PCF 3/8-N02U | 3/8 | NPT1/4 |
| PCF 3/8-N03U | 3/8 | NPT3/8 |
| PCF 3/8-N04U | 3/8 | NPT1/2 |
| PCF 1/2-N02U | 1/2 | NPT1/4 |
| PCF 1/2-N03U | 1/2 | NPT3/8 |
| PCF 1/2-N04U | 1/2 | NPT1/2 |

PCF-G

Female Straight

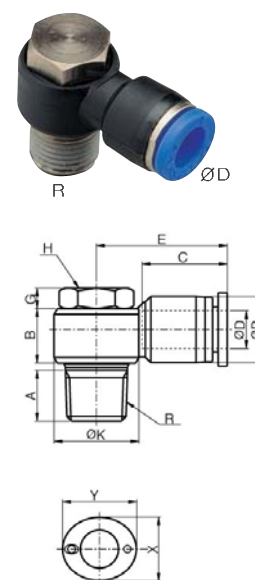


MODEL [ØD-T]

| Tube (Metric) - Thread(G) | | |
|---------------------------|----|------|
| MODEL | ØD | Rc |
| PCF 04-G01 | 4 | G1/8 |
| PCF 04-G02 | 4 | G1/4 |
| PCF 04-G03 | 4 | G3/8 |
| PCF 06-G01 | 6 | G1/8 |
| PCF 06-G02 | 6 | G1/4 |
| PCF 06-G03 | 6 | G3/8 |
| PCF 08-G01 | 8 | G1/8 |
| PCF 08-G02 | 8 | G1/4 |
| PCF 08-G03 | 8 | G3/8 |
| PCF 08-G04 | 8 | G1/2 |
| PCF 10-G01 | 10 | G1/8 |
| PCF 10-G02 | 10 | G1/4 |
| PCF 10-G03 | 10 | G3/8 |
| PCF 10-G04 | 10 | G1/2 |
| PCF 12-G02 | 12 | G1/4 |
| PCF 12-G03 | 12 | G3/8 |
| PCF 12-G04 | 12 | G1/2 |

PH

Male Banjo



MODEL [ØD-T]

| Tube (Metric) - Thread(R) | | |
|---------------------------|----|------|
| MODEL | ØD | R |
| PH 04-M5 | 4 | M5 |
| PH 04-M6 | 4 | M6 |
| PH 04-01 | 4 | R1/8 |
| PH 04-02 | 4 | R1/4 |
| PH 06-M5 | 6 | M5 |
| PH 06-M6 | 6 | M6 |
| PH 06-01 | 6 | R1/8 |
| PH 06-02 | 6 | R1/4 |
| PH 06-03 | 6 | R3/8 |
| PH 08-01 | 8 | R1/8 |
| PH 08-02 | 8 | R1/4 |
| PH 08-03 | 8 | R3/8 |
| PH 08-04 | 8 | R1/2 |
| PH 10-02 | 10 | R1/4 |
| PH 10-03 | 10 | R3/8 |
| PH 10-04 | 10 | R1/2 |
| PH 12-02 | 12 | R1/4 |
| PH 12-03 | 12 | R3/8 |
| PH 12-04 | 12 | R1/2 |

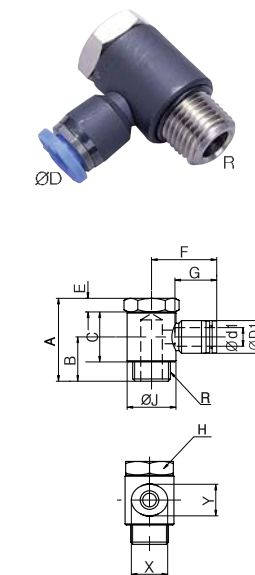
| Tube (Inch) - Thread(R) | | |
|-------------------------|------|------|
| MODEL | ØD | R |
| PH 5/32-M5 | 5/32 | M5 |
| PH 5/32-R01 | 5/32 | R1/8 |
| PH 1/4-M5 | 1/4 | M5 |
| PH 1/4-R01 | 1/4 | R1/8 |
| PH 1/4-R02 | 1/4 | R1/4 |
| PH 5/16-R01 | 5/16 | R1/8 |
| PH 5/16-R02 | 5/16 | R1/4 |
| PH 5/16-R03 | 5/16 | R3/8 |
| PH 3/8-R02 | 3/8 | R1/4 |
| PH 3/8-R03 | 3/8 | R3/8 |
| PH 3/8-R04 | 3/8 | R1/2 |
| PH 1/2-R03 | 1/2 | R3/8 |
| PH 1/2-R04 | 1/2 | R1/2 |

| Tube (Inch) - Thread (NPT) | | |
|----------------------------|------|-----------|
| MODEL | ØD | R |
| PH 5/32-U10U | 5/32 | UNF10 *32 |
| PH 5/32-N01U | 5/32 | NPT1/8 |
| PH 3/16-U10U | 3/16 | UNF10 *32 |
| PH 3/16-N01U | 3/16 | NPT1/8 |
| PH 3/16-N02U | 3/16 | NPT1/4 |
| PH 3/16-N03U | 3/16 | NPT3/8 |
| PH 1/4-U10U | 1/4 | UNF10 *32 |
| PH 1/4-N01U | 1/4 | NPT1/8 |
| PH 1/4-N02U | 1/4 | NPT1/4 |
| PH 5/16-N01U | 5/16 | NPT1/8 |
| PH 5/16-N02U | 5/16 | NPT1/4 |
| PH 5/16-N03U | 5/16 | NPT3/8 |
| PH 3/8-N02U | 3/8 | NPT1/4 |
| PH 3/8-N03U | 3/8 | NPT3/8 |
| PH 3/8-N04U | 3/8 | NPT1/2 |
| PH 1/2-N03U | 1/2 | NPT3/8 |
| PH 1/2-N04U | 1/2 | NPT1/2 |

*Rotating body construction after a proper installation.

PH-G

Female Banjo

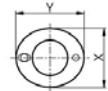
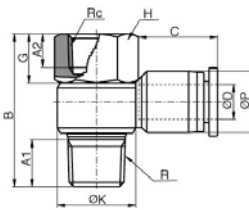


MODEL [ØD-T]

| Tube (Metric) - Thread(G) | | |
|---------------------------|----|------|
| MODEL | ØD | R |
| PH 04-G01 | 4 | G1/8 |
| PH 06-G01 | 6 | G1/8 |
| PH 06-G02 | 6 | G1/4 |
| PH 08-G01 | 8 | G1/8 |
| PH 08-G02 | 8 | G1/4 |
| PH 08-G03 | 8 | G3/8 |
| PH 10-G02 | 10 | G1/4 |
| PH 10-G03 | 10 | G3/8 |
| PH 12-G03 | 12 | G3/8 |
| PH 12-G04 | 12 | G1/2 |

PHF

Female Banjo



MODEL [ØD-T]

| Tube (Metric) - Thread(R) | | | |
|---------------------------|----|------|--|
| MODEL | ØD | Rc | |
| PHF 04-M5 | 4 | M5 | |
| PHF 04-M6 | 4 | M6 | |
| PHF 04-01 | 4 | R1/8 | |
| PHF 04-02 | 4 | R1/4 | |
| PHF 06-M5 | 6 | M5 | |
| PHF 06-M6 | 6 | M6 | |
| PHF 06-01 | 6 | R1/8 | |
| PHF 06-02 | 6 | R1/4 | |
| PHF 06-03 | 6 | R3/8 | |
| PHF 08-01 | 8 | R1/8 | |
| PHF 08-02 | 8 | R1/4 | |
| PHF 08-03 | 8 | R3/8 | |
| PHF 08-04 | 8 | R1/2 | |
| PHF 10-02 | 10 | R1/4 | |
| PHF 10-03 | 10 | R3/8 | |
| PHF 10-04 | 10 | R1/2 | |
| PHF 12-02 | 12 | R1/4 | |
| PHF 12-03 | 12 | R3/8 | |
| PHF 12-04 | 12 | R1/2 | |

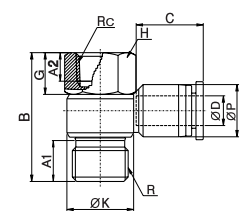
| Tube (Inch) - Thread(R) | | | |
|-------------------------|------|------|--|
| MODEL | ØD | Rc | |
| PHF 5/32-M5 | 5/32 | M5 | |
| PHF 5/32-R01 | 5/32 | R1/8 | |
| PHF 1/4-M5 | 1/4 | M5 | |
| PHF 1/4-R01 | 1/4 | R1/8 | |
| PHF 1/4-R02 | 1/4 | R1/4 | |
| PHF 5/16-R01 | 5/16 | R1/8 | |
| PHF 5/16-R02 | 5/16 | R1/4 | |
| PHF 5/16-R03 | 5/16 | R3/8 | |
| PHF 3/8-R02 | 3/8 | R1/4 | |
| PHF 3/8-R03 | 3/8 | R3/8 | |
| PHF 1/2-R03 | 1/2 | R3/8 | |
| PHF 1/2-R04 | 1/2 | R1/2 | |

| Tube (Inch) - Thread (NPT) | | | |
|----------------------------|------|-----------|--|
| MODEL | ØD | Rc | |
| PHF 5/32-U10U | 5/32 | UNF10 *32 | |
| PHF 5/32-N01U | 5/32 | NPT1/8 | |
| PHF 3/16-U10U | 3/16 | UNF10 *32 | |
| PHF 3/16-N01U | 3/16 | NPT1/8 | |
| PHF 3/16-N02U | 3/16 | NPT1/4 | |
| PHF 1/4-U10U | 1/4 | UNF10 *32 | |
| PHF 1/4-N01U | 1/4 | NPT1/8 | |
| PHF 1/4-N02U | 1/4 | NPT1/4 | |
| PHF 5/16-N01U | 5/16 | NPT1/8 | |
| PHF 5/16-N02U | 5/16 | NPT1/4 | |
| PHF 5/16-N03U | 5/16 | NPT3/8 | |
| PHF 3/8-N02U | 3/8 | NPT1/4 | |
| PHF 3/8-N03U | 3/8 | NPT3/8 | |
| PHF 1/2-N03U | 1/2 | NPT3/8 | |
| PHF 1/2-N04U | 1/2 | NPT1/2 | |

*Rotating body construction after a proper installation.

PHF-G

Female Banjo

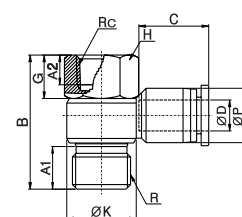


MODEL [ØD-T]

| Tube (Metric) - Thread(G) | | | |
|---------------------------|----|------|--|
| MODEL | ØD | Rc | |
| PHF 04-G01 | 4 | G1/8 | |
| PHF 06-G01 | 4 | G1/8 | |
| PHF 06-G02 | 4 | G1/4 | |
| PHF 08-G01 | 6 | G1/8 | |
| PHF 08-G02 | 6 | G1/4 | |
| PHF 08-G03 | 6 | G3/8 | |
| PHF 10-G02 | 8 | G1/4 | |
| PHF 10-G03 | 8 | G3/8 | |
| PHF 12-G03 | 12 | G3/8 | |
| PHF 12-G04 | 12 | G1/2 | |

PHF-GG

Female Banjo

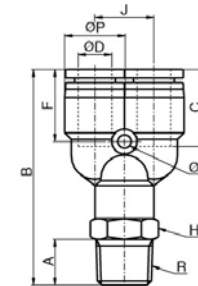


MODEL [ØD-T]

| Tube (Metric) - Thread(G) | | | |
|---------------------------|----|------|--|
| MODEL | ØD | Rc | |
| PHF 04G01-G01 | 4 | G1/8 | |
| PHF 06G01-G01 | 4 | G1/8 | |
| PHF 06G02-G02 | 4 | G1/4 | |
| PHF 08G01-G01 | 6 | G1/8 | |
| PHF 08G02-G02 | 6 | G1/4 | |
| PHF 08G03-G03 | 6 | G3/8 | |
| PHF 10G02-G02 | 8 | G1/4 | |
| PHF 10G03-G03 | 8 | G3/8 | |
| PHF 12G03-G03 | 12 | G3/8 | |
| PHF 12G04-G04 | 12 | G1/2 | |

PWT

Male Y



MODEL [ØD-T]

| Tube (Metric) - Thread(R) | | | |
|---------------------------|----|------|--|
| MODEL | ØD | R | |
| PWT 04-M5 | 4 | M5 | |
| PWT 04-M6 | 4 | M6 | |
| PWT 04-01 | 4 | R1/8 | |
| PWT 04-02 | 4 | R1/4 | |
| PWT 04-03 | 4 | R3/8 | |
| PWT 06-M5 | 6 | M5 | |
| PWT 06-M6 | 6 | M6 | |
| PWT 06-01 | 6 | R1/8 | |
| PWT 06-02 | 6 | R1/4 | |
| PWT 06-03 | 6 | R3/8 | |
| PWT 08-01 | 8 | R1/8 | |
| PWT 08-02 | 8 | R1/4 | |
| PWT 08-03 | 8 | R3/8 | |
| PWT 08-04 | 8 | R1/2 | |
| PWT 10-01 | 10 | R1/8 | |
| PWT 10-02 | 10 | R1/4 | |
| PWT 10-03 | 10 | R3/8 | |
| PWT 10-04 | 10 | R1/2 | |
| PWT 12-01 | 12 | R1/8 | |
| PWT 12-02 | 12 | R1/4 | |
| PWT 12-03 | 12 | R3/8 | |
| PWT 12-04 | 12 | R1/2 | |

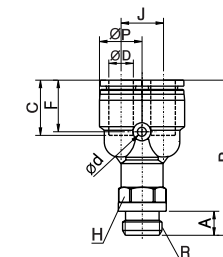
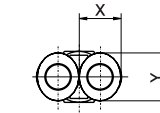
| Tube (Inch) - Thread(R) | | | |
|-------------------------|------|------|--|
| MODEL | ØD | R | |
| PWT 5/32-R01 | 5/32 | R1/8 | |
| PWT 5/32-R02 | 5/32 | R1/4 | |
| PWT 3/16-R01 | 3/16 | R1/8 | |
| PWT 3/16-R02 | 3/16 | R1/4 | |
| PWT 3/16-R03 | 3/16 | R3/8 | |
| PWT 1/4-R01 | 1/4 | R1/8 | |
| PWT 1/4-R02 | 1/4 | R1/4 | |
| PWT 1/4-R03 | 1/4 | R3/8 | |
| PWT 5/16-R01 | 5/16 | R1/8 | |
| PWT 5/16-R02 | 5/16 | R1/4 | |
| PWT 5/16-R03 | 5/16 | R3/8 | |
| PWT 5/16-R04 | 5/16 | R1/2 | |
| PWT 3/8-R01 | 3/8 | R1/8 | |
| PWT 3/8-R02 | 3/8 | R1/4 | |
| PWT 3/8-R03 | 3/8 | R3/8 | |
| PWT 3/8-R04 | 3/8 | R1/2 | |
| PWT 1/2-R02 | 1/2 | R1/4 | |
| PWT 1/2-R03 | 1/2 | R3/8 | |
| PWT 1/2-R04 | 1/2 | R1/2 | |

| Tube (Inch) - Thread (NPT) | | | |
|----------------------------|------|-----------|--|
| MODEL | ØD | R | |
| PWT 5/32-U10U | 5/32 | UNF10 *32 | |
| PWT 5/32-N01U | 5/32 | NPT1/8 | |
| PWT 5/32-N02U | 5/32 | NPT1/4 | |
| PWT 3/16-U10U | 5/32 | UNF10 *32 | |
| PWT 3/16-N01U | 3/16 | NPT1/8 | |
| PWT 3/16-N02U | 3/16 | NPT1/4 | |
| PWT 3/16-N03U | 3/16 | NPT3/8 | |
| PWT 1/4-U10U | 1/4 | UNF10 *32 | |
| PWT 1/4-N01U | 1/4 | NPT1/8 | |
| PWT 1/4-N02U | 1/4 | NPT1/4 | |
| PWT 1/4-N03U | 1/4 | NPT3/8 | |
| PWT 5/16-N01U | 5/16 | NPT1/8 | |
| PWT 5/16-N02U | 5/16 | NPT1/4 | |
| PWT 5/16-N03U | 5/16 | NPT3/8 | |
| PWT 5/16-N04U | 5/16 | NPT1/2 | |
| PWT 3/8-N01U | 3/8 | NPT1/8 | |
| PWT 3/8-N02U | 3/8 | NPT1/4 | |
| PWT 3/8-N03U | 3/8 | NPT3/8 | |
| PWT 3/8-N04U | 3/8 | NPT1/2 | |
| PWT 1/2-N02U | 1/2 | NPT1/4 | |
| PWT 1/2-N03U | 1/2 | NPT3/8 | |
| PWT 1/2-N04U | 1/2 | NPT1/2 | |

*Rotating body construction after a proper installation.

PWT-G

Male Y



MODEL [ØD-T]

| Tube (Metric) - Thread(G) | | | |
|---------------------------|----|------|--|
| MODEL | ØD | R | |
| PWT 04-G01 | 4 | G1/8 | |
| PWT 04-G02 | 4 | G1/4 | |
| PWT 04-G03 | 4 | G3/8 | |
| PWT 06-G01 | 6 | G1/8 | |
| PWT 06-G02 | 6 | G1/4 | |
| PWT 06-G03 | 6 | G3/8 | |
| PWT 06-G04 | 6 | G1/2 | |
| PWT 08-G01 | 8 | G1/8 | |
| PWT 08-G02 | 8 | G1/4 | |
| PWT 08-G03 | 8 | G3/8 | |
| PWT 08-G04 | 8 | G1/2 | |
| PWT 10-G01 | 10 | G1/8 | |
| PWT 10-G02 | 10 | G1/4 | |
| PWT 10-G03 | 10 | G3/8 | |
| PWT 10-G04 | 10 | G1/2 | |
| PWT 12-G01 | 12 | G1/8 | |
| PWT 12-G02 | 12 | G1/4 | |
| PWT 12-G03 | 12 | G3/8 | |
| PWT 12-G04 | 12 | G1/2 | |

PHT(D2)

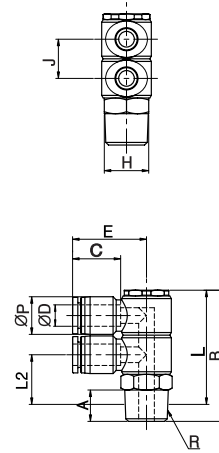
Double Universal Elbow



MODEL [ØD-T]

Tube (Metric) - Thread(R)

| MODEL | ØD | R |
|--------------|----|------|
| PHT 04-01(2) | 4 | R1/8 |
| PHT 04-02(2) | 4 | R1/4 |
| PHT 04-03(2) | 4 | R3/8 |
| PHT 06-01(2) | 6 | R1/8 |
| PHT 06-02(2) | 6 | R1/4 |
| PHT 06-03(2) | 6 | R3/8 |
| PHT 08-01(2) | 8 | R1/8 |
| PHT 08-02(2) | 8 | R1/4 |
| PHT 08-03(2) | 8 | R3/8 |
| PHT 08-04(2) | 8 | R1/2 |
| PHT 10-02(2) | 10 | R1/4 |
| PHT 10-03(2) | 10 | R3/8 |
| PHT 10-04(2) | 10 | R1/2 |
| PHT 12-02(2) | 12 | R1/4 |
| PHT 12-03(2) | 12 | R3/8 |
| PHT 12-04(2) | 12 | R1/2 |



*Rotating body construction after a proper installation.

PHT(D2)-G

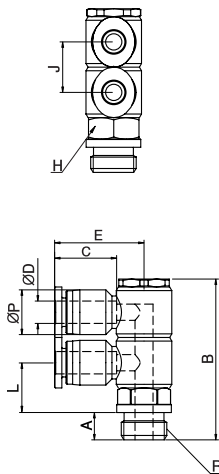
Double Universal Elbow



MODEL [ØD-T]

Tube (Metric) - Thread(G)

| MODEL | ØD | R |
|---------------|----|------|
| PHT 04-G01(2) | 4 | G1/8 |
| PHT 04-G02(2) | 4 | G1/4 |
| PHT 04-G03(2) | 4 | G3/8 |
| PHT 06-G01(2) | 6 | G1/8 |
| PHT 06-G02(2) | 6 | G1/4 |
| PHT 06-G03(2) | 6 | G3/8 |
| PHT 08-G01(2) | 8 | G1/8 |
| PHT 08-G02(2) | 8 | G1/4 |
| PHT 08-G03(2) | 8 | G3/8 |
| PHT 08-G04(2) | 8 | G1/2 |
| PHT 10-G02(2) | 10 | G1/4 |
| PHT 10-G03(2) | 10 | G3/8 |
| PHT 10-G04(2) | 10 | G1/2 |
| PHT 12-G02(2) | 12 | G1/4 |
| PHT 12-G03(2) | 12 | G3/8 |
| PHT 12-G04(2) | 12 | G1/2 |



PHT(D3)

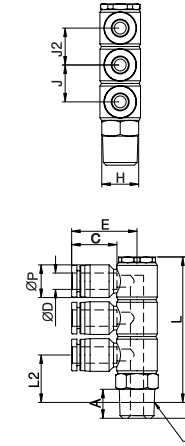
Triple Universal Elbow



MODEL [ØD-T]

Tube (Metric) - Thread(R)

| MODEL | ØD | R |
|--------------|----|------|
| PHT 04-01(3) | 4 | R1/8 |
| PHT 04-02(3) | 4 | R1/4 |
| PHT 04-03(3) | 4 | R3/8 |
| PHT 06-01(3) | 6 | R1/8 |
| PHT 06-02(3) | 6 | R1/4 |
| PHT 06-03(3) | 6 | R3/8 |
| PHT 08-01(3) | 8 | R1/8 |
| PHT 08-02(3) | 8 | R1/4 |
| PHT 08-03(3) | 8 | R3/8 |
| PHT 08-04(3) | 8 | R1/2 |
| PHT 10-02(3) | 10 | R1/4 |
| PHT 10-03(3) | 10 | R3/8 |
| PHT 10-04(3) | 10 | R1/2 |
| PHT 12-02(3) | 12 | R1/4 |
| PHT 12-03(3) | 12 | R3/8 |
| PHT 12-04(3) | 12 | R1/2 |



*Rotating body construction after a proper installation.

PHT(D3)-G

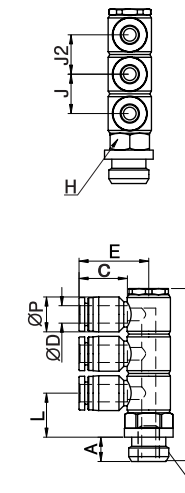
Triple Universal Elbow



MODEL [ØD-T]

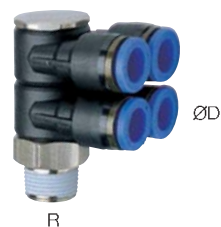
Tube (Metric) - Thread(G)

| MODEL | ØD | R |
|---------------|----|------|
| PHT 04-G01(3) | 4 | G1/8 |
| PHT 04-G02(3) | 4 | G1/4 |
| PHT 04-G03(3) | 4 | G3/8 |
| PHT 06-G01(3) | 6 | G1/8 |
| PHT 06-G02(3) | 6 | G1/4 |
| PHT 06-G03(3) | 6 | G3/8 |
| PHT 08-G01(3) | 8 | G1/8 |
| PHT 08-G02(3) | 8 | G1/4 |
| PHT 08-G03(3) | 8 | G3/8 |
| PHT 08-G04(3) | 8 | G1/2 |
| PHT 10-G02(3) | 10 | G1/4 |
| PHT 10-G03(3) | 10 | G3/8 |
| PHT 10-G04(3) | 10 | G1/2 |
| PHT 12-G02(3) | 12 | G1/4 |
| PHT 12-G03(3) | 12 | G3/8 |
| PHT 12-G04(3) | 12 | G1/2 |



PAT(D2)

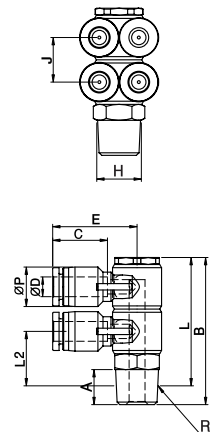
Double Branch A



MODEL [ØD-T]

Tube (Metric) - Thread(R)

| MODEL | ØD | R |
|--------------|----|------|
| PAT 04-01(2) | 4 | R1/8 |
| PAT 04-02(2) | 4 | R1/4 |
| PAT 04-03(2) | 4 | R3/8 |
| PAT 06-01(2) | 6 | R1/8 |
| PAT 06-02(2) | 6 | R1/4 |
| PAT 06-03(2) | 6 | R3/8 |
| PAT 08-01(2) | 8 | R1/8 |
| PAT 08-02(2) | 8 | R1/4 |
| PAT 08-03(2) | 8 | R3/8 |
| PAT 08-04(2) | 8 | R1/2 |
| PAT 10-02(2) | 10 | R1/4 |
| PAT 10-03(2) | 10 | R3/8 |
| PAT 10-04(2) | 10 | R1/2 |
| PAT 12-02(2) | 10 | R1/4 |
| PAT 12-03(2) | 12 | R3/8 |
| PAT 12-04(2) | 12 | R1/2 |



*Rotating body construction after a proper installation.

PAT(D2)-G

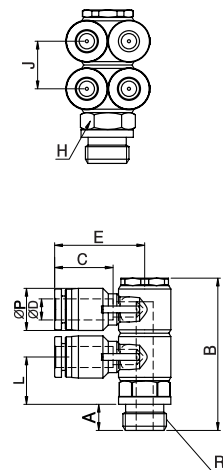
Double Branch A



MODEL [ØD-T]

Tube (Metric) - Thread(G)

| MODEL | ØD | R |
|---------------|----|------|
| PAT 04-G01(2) | 4 | G1/8 |
| PAT 04-G02(2) | 4 | G1/4 |
| PAT 04-G03(2) | 4 | G3/8 |
| PAT 06-G01(2) | 6 | G1/8 |
| PAT 06-G02(2) | 6 | G1/4 |
| PAT 06-G03(2) | 6 | G3/8 |
| PAT 08-G01(2) | 8 | G1/8 |
| PAT 08-G02(2) | 8 | G1/4 |
| PAT 08-G03(2) | 8 | G3/8 |
| PAT 08-G04(2) | 8 | G1/2 |
| PAT 10-G02(2) | 10 | G1/4 |
| PAT 10-G03(2) | 10 | G3/8 |
| PAT 10-G04(2) | 10 | G1/2 |
| PAT 12-G02(2) | 12 | G1/4 |
| PAT 12-G03(2) | 12 | G3/8 |
| PAT 12-G04(2) | 12 | G1/2 |



PAT(D3)

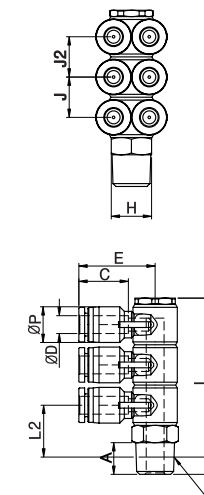
Triple Branch A



MODEL [ØD-T]

Tube (Metric) - Thread(R)

| MODEL | ØD | R |
|--------------|----|------|
| PAT 04-01(3) | 4 | R1/8 |
| PAT 04-02(3) | 4 | R1/4 |
| PAT 04-03(3) | 4 | R3/8 |
| PAT 06-01(3) | 6 | R1/8 |
| PAT 06-02(3) | 6 | R1/4 |
| PAT 06-03(3) | 6 | R3/8 |
| PAT 08-01(3) | 8 | R1/8 |
| PAT 08-02(3) | 8 | R1/4 |
| PAT 08-03(3) | 8 | R3/8 |
| PAT 08-04(3) | 8 | R1/2 |
| PAT 10-02(3) | 10 | R1/4 |
| PAT 10-03(3) | 10 | R3/8 |
| PAT 10-04(3) | 10 | R1/2 |
| PAT 12-02(3) | 10 | R1/4 |
| PAT 12-03(3) | 12 | R3/8 |
| PAT 12-04(3) | 12 | R1/2 |



*Rotating body construction after a proper installation.

PAT(D3)-G

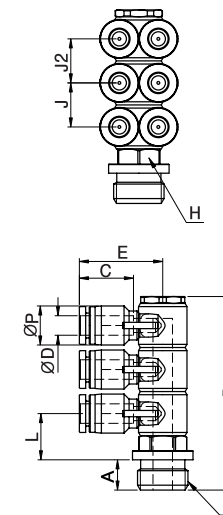
Triple Branch A



MODEL [ØD-T]

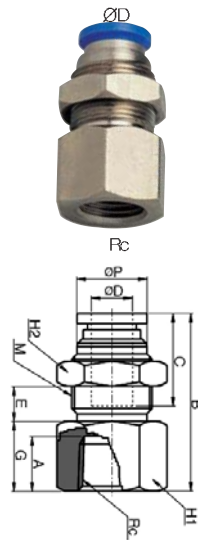
Tube (Metric) - Thread(G)

| MODEL | ØD | R |
|---------------|----|------|
| PAT 04-G01(3) | 4 | G1/8 |
| PAT 04-G02(3) | 4 | G1/4 |
| PAT 04-G03(3) | 4 | G3/8 |
| PAT 06-G01(3) | 6 | G1/8 |
| PAT 06-G02(3) | 6 | G1/4 |
| PAT 06-G03(3) | 6 | G3/8 |
| PAT 08-G01(3) | 8 | G1/8 |
| PAT 08-G02(3) | 8 | G1/4 |
| PAT 08-G03(3) | 8 | G3/8 |
| PAT 08-G04(3) | 8 | G1/2 |
| PAT 10-G02(3) | 10 | G1/4 |
| PAT 10-G03(3) | 10 | G3/8 |
| PAT 10-G04(3) | 10 | G1/2 |
| PAT 12-G02(3) | 12 | G1/4 |
| PAT 12-G03(3) | 12 | G3/8 |
| PAT 12-G04(3) | 12 | G1/2 |



PMF

Bulkhead Female Straight



MODEL [ØD-T]

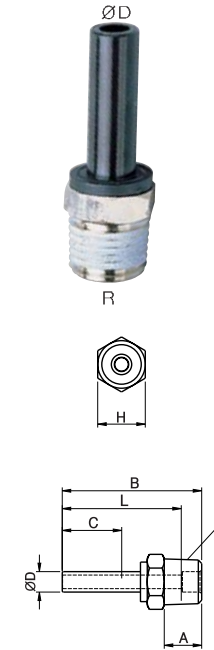
| Tube (Metric) - Thread(R) | | |
|---------------------------|----|-------|
| MODEL | ØD | Rc |
| PMF 04-01 | 4 | Rc1/8 |
| PMF 04-02 | 4 | Rc1/4 |
| PMF 04-03 | 4 | Rc3/8 |
| PMF 06-01 | 6 | Rc1/8 |
| PMF 06-02 | 6 | Rc1/4 |
| PMF 06-03 | 6 | Rc3/8 |
| PMF 08-01 | 8 | Rc1/8 |
| PMF 08-02 | 8 | Rc1/4 |
| PMF 08-03 | 8 | Rc3/8 |
| PMF 08-04 | 8 | Rc1/2 |
| PMF 10-01 | 10 | Rc1/8 |
| PMF 10-02 | 10 | Rc1/4 |
| PMF 10-03 | 10 | Rc3/8 |
| PMF 10-04 | 10 | Rc1/2 |
| PMF 12-01 | 12 | Rc1/8 |
| PMF 12-02 | 12 | Rc1/4 |
| PMF 12-03 | 12 | Rc3/8 |
| PMF 12-04 | 12 | Rc1/2 |

| Tube (Inch) - Thread(R) | | |
|-------------------------|------|-------|
| MODEL | ØD | Rc |
| PMF 5/32-R01 | 5/32 | Rc1/8 |
| PMF 5/32-R02 | 5/32 | Rc1/4 |
| PMF 5/32-R03 | 5/32 | Rc3/8 |
| PMF 3/16-R01 | 3/16 | Rc1/8 |
| PMF 3/16-R02 | 3/16 | Rc1/4 |
| PMF 1/4-R01 | 1/4 | Rc1/8 |
| PMF 1/4-R02 | 1/4 | Rc1/4 |
| PMF 1/4-R03 | 1/4 | Rc3/8 |
| PMF 5/16-R01 | 5/16 | Rc1/8 |
| PMF 5/16-R02 | 5/16 | Rc1/4 |
| PMF 5/16-R03 | 5/16 | Rc3/8 |
| PMF 5/16-R04 | 5/16 | Rc1/2 |
| PMF 3/8-R01 | 3/8 | Rc1/8 |
| PMF 3/8-R02 | 3/8 | Rc1/4 |
| PMF 3/8-R03 | 3/8 | Rc3/8 |
| PMF 3/8-R04 | 3/8 | Rc1/2 |
| PMF 1/2-R01 | 1/2 | Rc1/8 |
| PMF 1/2-R02 | 1/2 | Rc1/4 |
| PMF 1/2-R03 | 1/2 | Rc3/8 |
| PMF 1/2-R04 | 1/2 | Rc1/2 |

| Tube (Inch) - Thread (NPT) | | |
|----------------------------|------|--------|
| MODEL | ØD | Rc |
| PMF 5/32-N01U | 5/32 | NPT1/8 |
| PMF 3/16-N01U | 5/32 | NPT1/8 |
| PMF 3/16-N02U | 5/32 | NPT1/4 |
| PMF 1/4-N01U | 1/4 | NPT1/8 |
| PMF 1/4-N02U | 1/4 | NPT1/4 |
| PMF 5/16-N01U | 5/16 | NPT1/8 |
| PMF 5/16-N02U | 5/16 | NPT1/4 |
| PMF 5/16-N03U | 5/16 | NPT3/8 |
| PMF 3/8-N02U | 3/8 | NPT1/4 |
| PMF 3/8-N03U | 3/8 | NPT3/8 |
| PMF 1/2-N02U | 1/2 | NPT1/4 |
| PMF 1/2-N03U | 1/2 | NPT3/8 |
| PMF 1/2-N04U | 1/2 | NPT1/2 |

PCJ

Plug-In Male



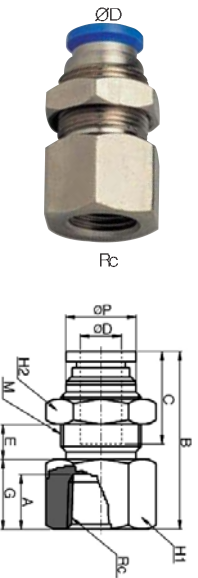
MODEL [ØD-T]

| Tube (Metric) - Thread(R) | | |
|---------------------------|----|------|
| MODEL | ØD | R |
| PCJ 04-M5 | 4 | M5 |
| PCJ 04-01 | 4 | R1/8 |
| PCJ 04-02 | 4 | R1/4 |
| PCJ 06-M5 | 6 | M5 |
| PCJ 06-01 | 6 | R1/8 |
| PCJ 06-02 | 6 | R1/4 |
| PCJ 06-03 | 8 | R3/8 |
| PCJ 08-01 | 8 | R1/8 |
| PCJ 08-02 | 8 | R1/4 |
| PCJ 08-03 | 8 | R3/8 |
| PCJ 10-02 | 10 | R1/4 |
| PCJ 10-03 | 10 | R3/8 |
| PCJ 10-04 | 10 | R1/2 |
| PCJ 12-02 | 10 | R1/4 |
| PCJ 12-03 | 12 | R3/8 |
| PCJ 12-04 | 12 | R1/2 |
| PCJ 16-03 | 16 | R3/8 |
| PCJ 16-04 | 16 | R1/2 |

| Tube (Inch) - Thread (NPT) | | |
|----------------------------|------|------------|
| MODEL | ØD | R |
| PCJ 5/32-U10U | 5/32 | UNF10 * 32 |
| PCJ 5/32-N01U | 5/32 | NPT1/8 |
| PCJ 5/32-N02U | 5/32 | NPT1/4 |
| PCJ 3/16-U10U | 3/16 | UNF10 * 32 |
| PCJ 3/16-N01U | 3/16 | NPT1/8 |
| PCJ 3/16-N02U | 3/16 | NPT1/4 |
| PCJ 1/4-U10U | 1/4 | UNF10 * 32 |
| PCJ 1/4-N01U | 1/4 | NPT1/8 |
| PCJ 1/4-N02U | 1/4 | NPT1/4 |
| PCJ 1/4-N03U | 1/4 | NPT3/8 |
| PCJ 5/16-N02U | 5/16 | NPT1/4 |
| PCJ 5/16-N03U | 5/16 | NPT3/8 |
| PCJ 3/8-N02U | 3/8 | NPT1/4 |
| PCJ 3/8-N03U | 3/8 | NPT3/8 |
| PCJ 3/8-N04U | 3/8 | NPT1/2 |
| PCJ 1/2-N02U | 1/2 | NPT1/4 |
| PCJ 1/2-N03U | 1/2 | NPT3/8 |
| PCJ 1/2-N04U | 1/2 | NPT1/2 |

PMF-G

Bulkhead Female Straight

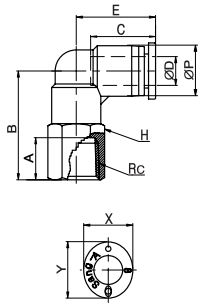


MODEL [ØD-T]

| Tube (Metric) - Thread(G) | | |
|---------------------------|----|------|
| MODEL | ØD | Rc |
| PMF 04-G01 | 4 | G1/8 |
| PMF 04-G02 | 4 | G1/4 |
| PMF 04-G03 | 4 | G3/8 |
| PMF 06-G01 | 6 | G1/8 |
| PMF 06-G02 | 6 | G1/4 |
| PMF 06-G03 | 6 | G3/8 |
| PMF 08-G01 | 8 | G1/8 |
| PMF 08-G02 | 8 | G1/4 |
| PMF 08-G03 | 8 | G3/8 |
| PMF 08-G04 | 8 | G1/2 |
| PMF 10-G01 | 10 | G1/8 |
| PMF 10-G02 | 10 | G1/4 |
| PMF 10-G03 | 10 | G3/8 |
| PMF 10-G04 | 10 | G1/2 |
| PMF 12-G01 | 12 | G1/8 |
| PMF 12-G02 | 12 | G1/4 |
| PMF 12-G03 | 12 | G3/8 |
| PMF 12-G04 | 12 | G1/2 |

PLF

Female Elbow



MODEL [ØD-T]

Tube (Metric) - Thread(R)

| MODEL | ØD | Rc |
|-----------|----|-------|
| PLF 04-M5 | 4 | M5 |
| PLF 04-M6 | 4 | M6 |
| PLF 04-01 | 4 | Rc1/8 |
| PLF 04-02 | 4 | Rc1/4 |
| PLF 06-M5 | 6 | M5 |
| PLF 06-M6 | 6 | M6 |
| PLF 06-01 | 6 | Rc1/8 |
| PLF 06-02 | 6 | Rc1/4 |
| PLF 06-03 | 6 | Rc3/8 |
| PLF 08-01 | 8 | Rc1/8 |
| PLF 08-02 | 8 | Rc1/4 |
| PLF 08-03 | 8 | Rc3/8 |
| PLF 10-02 | 10 | Rc1/4 |
| PLF 10-03 | 10 | Rc3/8 |
| PLF 10-04 | 10 | Rc1/2 |

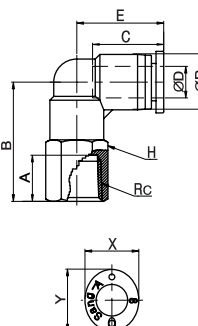
Tube (Inch) - Thread (NPT)

| MODEL | ØD | Rc |
|---------------|------|------------|
| PLF 5/32-U10U | 5/32 | UNF10 * 32 |
| PLF 5/32-N01U | 5/32 | NPT1/8 |
| PLF 5/32-N02U | 5/32 | NPT1/4 |
| PLF 3/16-U10U | 3/16 | UNF10 * 32 |
| PLF 3/16-N01U | 3/16 | NPT1/8 |
| PLF 3/16-N02U | 3/16 | NPT1/4 |
| PLF 3/16-N03U | 3/16 | NPT3/8 |
| PLF 1/4-U10U | 1/4 | UNF10 * 32 |
| PLF 1/4-N01U | 1/4 | NPT1/8 |
| PLF 1/4-N02U | 1/4 | NPT1/4 |
| PLF 1/4-N03U | 1/4 | NPT3/8 |
| PLF 5/16-N01U | 5/16 | NPT1/8 |
| PLF 5/16-N02U | 5/16 | NPT1/4 |
| PLF 5/16-N03U | 5/16 | NPT3/8 |
| PLF 3/8-N02U | 3/8 | NPT1/4 |
| PLF 3/8-N03U | 3/8 | NPT3/8 |
| PLF 3/8-N04U | 3/8 | NPT1/2 |

*Rotating body construction after a proper installation.

PLF-G

Female Elbow



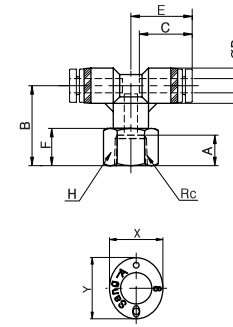
MODEL [ØD-T]

Tube (Metric) - Thread(G)

| MODEL | ØD | Rc |
|------------|----|------|
| PLF 04-G01 | 4 | G1/8 |
| PLF 04-G02 | 4 | G1/4 |
| PLF 06-G01 | 6 | G1/8 |
| PLF 06-G02 | 6 | G1/4 |
| PLF 06-G03 | 6 | G3/8 |
| PLF 08-G01 | 8 | G1/8 |
| PLF 08-G02 | 8 | G1/4 |
| PLF 08-G03 | 8 | G3/8 |
| PLF 10-G02 | 10 | G1/4 |
| PLF 10-G03 | 10 | G3/8 |
| PLF 10-G04 | 10 | G1/2 |

PTF

Female Branch Tee



MODEL [ØD-T]

Tube (Metric) - Thread(R)

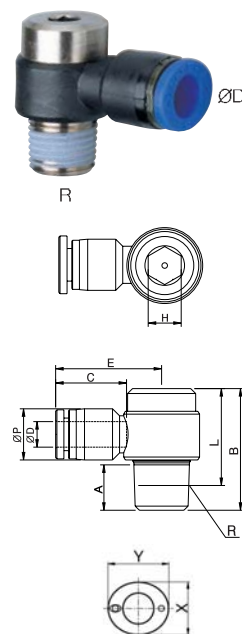
| MODEL | ØD | Rc |
|-----------|----|-------|
| PTF 04-M5 | 4 | M5 |
| PTF 04-M6 | 4 | M6 |
| PTF 04-01 | 4 | Rc1/8 |
| PTF 04-02 | 4 | Rc1/4 |
| PTF 06-M5 | 6 | M5 |
| PTF 06-M6 | 6 | M6 |
| PTF 06-01 | 6 | Rc1/8 |
| PTF 06-02 | 6 | Rc1/4 |
| PTF 06-03 | 6 | Rc3/8 |
| PTF 08-01 | 8 | Rc1/8 |
| PTF 08-02 | 8 | Rc1/4 |
| PTF 08-03 | 8 | Rc3/8 |
| PTF 10-02 | 10 | Rc1/4 |
| PTF 10-03 | 10 | Rc3/8 |
| PTF 10-04 | 10 | Rc1/2 |

Tube (Inch) - Thread (NPT)

| MODEL | ØD | Rc |
|---------------|------|------------|
| PTF 5/32-U10U | 5/32 | UNF10 * 32 |
| PTF 5/32-N01U | 5/32 | NPT1/8 |
| PTF 5/32-N02U | 5/32 | NPT1/4 |
| PTF 3/16-U01U | 3/16 | UNF10 * 32 |
| PTF 3/16-N01U | 3/16 | NPT1/8 |
| PTF 3/16-N02U | 3/16 | NPT1/4 |
| PTF 3/16-N03U | 3/16 | NPT3/8 |
| PTF 1/4-U10U | 1/4 | UNF10 * 32 |
| PTF 1/4-N01U | 1/4 | NPT1/8 |
| PTF 1/4-N02U | 1/4 | NPT1/4 |
| PTF 1/4-N03U | 1/4 | NPT3/8 |
| PTF 5/16-N01U | 5/16 | NPT1/8 |
| PTF 5/16-N02U | 5/16 | NPT1/4 |
| PTF 5/16-N03U | 5/16 | NPT3/8 |
| PTF 3/8-N02U | 3/8 | NPT1/4 |
| PTF 3/8-N03U | 3/8 | NPT3/8 |
| PTF 3/8-N04U | 3/8 | NPT1/2 |

POL

Hex. Holed Banjo



MODEL [ØD-T]

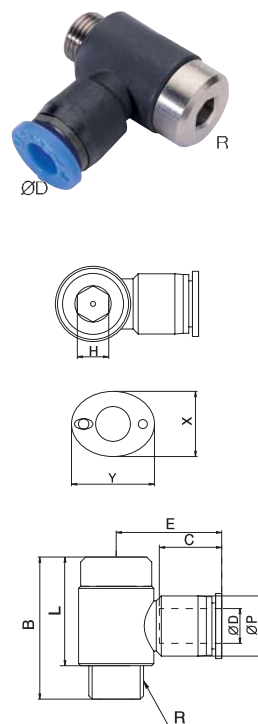
| Tube (Metric) - Thread(R) | | | |
|---------------------------|----|------|--|
| MODEL | ØD | R | |
| POL 04-M5 | 4 | M5 | |
| POL 04-M6 | 4 | M6 | |
| POL 04-01 | 4 | R1/8 | |
| POL 06-M5 | 6 | M5 | |
| POL 06-M6 | 6 | M6 | |
| POL 06-01 | 6 | R1/8 | |
| POL 06-02 | 6 | R1/4 | |
| POL 06-03 | 6 | R3/8 | |
| POL 08-01 | 8 | R1/8 | |
| POL 08-02 | 8 | R1/4 | |
| POL 08-03 | 8 | R3/8 | |
| POL 08-04 | 8 | R1/2 | |
| POL 10-02 | 10 | R1/4 | |
| POL 10-03 | 10 | R3/8 | |
| POL 10-04 | 10 | R1/2 | |
| POL 12-02 | 12 | R1/4 | |
| POL 12-03 | 12 | R3/8 | |
| POL 12-04 | 12 | R1/2 | |

| Tube (Inch) - Thread (NPT) | | | |
|----------------------------|------|------------|--|
| MODEL | ØD | R | |
| POL 5/32-U10U | 5/32 | UNF10 * 32 | |
| POL 5/32-N01U | 5/32 | NPT1/8 | |
| POL 3/16-U10U | 3/16 | UNF10 * 32 | |
| POL 3/16-N01U | 3/16 | NPT1/8 | |
| POL 3/16-N02U | 3/16 | NPT1/4 | |
| POL 3/16-N03U | 3/16 | NPT3/8 | |
| POL 1/4-U10U | 1/4 | UNF10 * 32 | |
| POL 1/4-N01U | 1/4 | NPT1/8 | |
| POL 1/4-N02U | 1/4 | NPT1/4 | |
| POL 1/4-N03U | 1/4 | NPT3/8 | |
| POL 5/16-N01U | 5/16 | NPT1/8 | |
| POL 5/16-N02U | 5/16 | NPT1/4 | |
| POL 5/16-N03U | 5/16 | NPT3/8 | |
| POL 5/16-N04U | 5/16 | NPT1/2 | |
| POL 3/8-N02U | 3/8 | NPT1/4 | |
| POL 3/8-N03U | 3/8 | NPT3/8 | |
| POL 3/8-N04U | 3/8 | NPT1/2 | |
| POL 1/2-N03U | 1/2 | NPT3/8 | |
| POL 1/2-N04U | 1/2 | NPT1/2 | |

*Rotating body construction after a proper installation.

POL-G

Extended Male Elbow

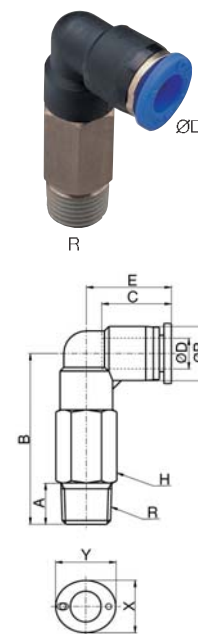


MODEL [ØD-T]

| Tube (Metric) - Thread(G) | | | |
|---------------------------|----|-------|--|
| MODEL | ØD | R | |
| POL 04-G01 | 4 | PF1/8 | |
| POL 06-G01 | 6 | PF1/8 | |
| POL 06-G02 | 6 | PF1/4 | |
| POL 08-G01 | 8 | PF1/8 | |
| POL 08-G02 | 8 | PF1/4 | |
| POL 08-G03 | 8 | PF3/8 | |
| POL 10-G02 | 8 | PF1/4 | |
| POL 10-G03 | 10 | PF3/8 | |
| POL 12-G03 | 12 | PF3/8 | |
| POL 12-G04 | 12 | PF1/2 | |

PLL

Extended Male Elbow



MODEL [ØD-T]

| Tube (Metric) - Thread(R) | | | |
|---------------------------|----|------|--|
| MODEL | ØD | Rc | |
| PLL 04-M5 | 4 | M5 | |
| PLL 04-M6 | 4 | M6 | |
| PLL 04-01 | 4 | R1/8 | |
| PLL 04-02 | 4 | R1/4 | |
| PLL 04-03 | 4 | R3/8 | |
| PLL 06-M5 | 6 | M5 | |
| PLL 06-M6 | 6 | M6 | |
| PLL 06-01 | 6 | R1/8 | |
| PLL 06-02 | 6 | R1/4 | |
| PLL 06-03 | 6 | R3/8 | |
| PLL 08-01 | 8 | R1/8 | |
| PLL 08-02 | 8 | R1/4 | |
| PLL 08-03 | 8 | R3/8 | |
| PLL 08-04 | 8 | R1/2 | |
| PLL 10-01 | 10 | R1/8 | |
| PLL 10-02 | 10 | R1/4 | |
| PLL 10-03 | 10 | R3/8 | |
| PLL 10-04 | 10 | R1/2 | |
| PLL 12-01 | 12 | R1/8 | |
| PLL 12-02 | 12 | R1/4 | |
| PLL 12-03 | 12 | R3/8 | |
| PLL 12-04 | 12 | R1/2 | |

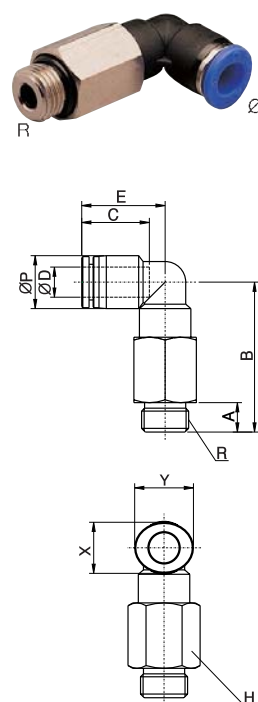
| Tube (Inch) - Thread(R) | | | |
|-------------------------|------|------|--|
| MODEL | ØD | R | |
| PLL 5/32-R01 | 5/32 | R1/8 | |
| PLL 5/32-R02 | 5/32 | R1/4 | |
| PLL 5/32-R03 | 5/32 | R3/8 | |
| PLL 3/16-R01 | 3/16 | R1/8 | |
| PLL 3/16-R02 | 3/16 | R1/4 | |
| PLL 3/16-R03 | 3/16 | R3/8 | |
| PLL 1/4-R01 | 1/4 | R1/8 | |
| PLL 1/4-R02 | 1/4 | R1/4 | |
| PLL 1/4-R03 | 1/4 | R3/8 | |
| PLL 5/16-R01 | 5/16 | R1/8 | |
| PLL 5/16-R02 | 5/16 | R1/4 | |
| PLL 5/16-R03 | 5/16 | R3/8 | |
| PLL 5/16-R04 | 5/16 | R1/2 | |
| PLL 3/8-R01 | 3/8 | R1/8 | |
| PLL 3/8-R02 | 3/8 | R1/4 | |
| PLL 3/8-R03 | 3/8 | R3/8 | |
| PLL 3/8-R04 | 3/8 | R1/2 | |
| PLL 1/2-R01 | 1/2 | R1/8 | |
| PLL 1/2-R02 | 1/2 | R1/4 | |
| PLL 1/2-R03 | 1/2 | R3/8 | |
| PLL 1/2-R04 | 1/2 | R1/2 | |

| Tube (Inch) - Thread (NPT) | | | |
|----------------------------|------|------------|--|
| MODEL | ØD | R | |
| PLL 5/32-U10U | 5/32 | UNF10 * 32 | |
| PLL 5/32-N01U | 5/32 | NPT1/8 | |
| PLL 5/32-N02U | 5/32 | NPT1/4 | |
| PLL 5/32-N03U | 5/32 | NPT3/8 | |
| PLL 3/16-N01U | 3/16 | NPT1/8 | |
| PLL 3/16-N02U | 3/16 | NPT1/4 | |
| PLL 3/16-N03U | 3/16 | NPT3/8 | |
| PLL 1/4-U10U | 1/4 | UNF10 * 32 | |
| PLL 1/4-N01U | 1/4 | NPT1/8 | |
| PLL 1/4-N02U | 1/4 | NPT1/4 | |
| PLL 1/4-N03U | 1/4 | NPT3/8 | |
| PLL 5/16-N01U | 5/16 | NPT1/8 | |
| PLL 5/16-N02U | 5/16 | NPT1/4 | |
| PLL 5/16-N03U | 5/16 | NPT3/8 | |
| PLL 3/8-N01U | 3/8 | NPT1/8 | |
| PLL 3/8-N02U | 3/8 | NPT1/4 | |
| PLL 3/8-N03U | 3/8 | NPT3/8 | |
| PLL 3/8-N04U | 3/8 | NPT1/2 | |
| PLL 1/2-N02U | 1/2 | NPT1/4 | |
| PLL 1/2-N03U | 1/2 | NPT3/8 | |
| PLL 1/2-N04U | 1/2 | NPT1/2 | |

*Hexagonal wrench may be used for a proper tightening.

PLL-G

Extended Male Elbow

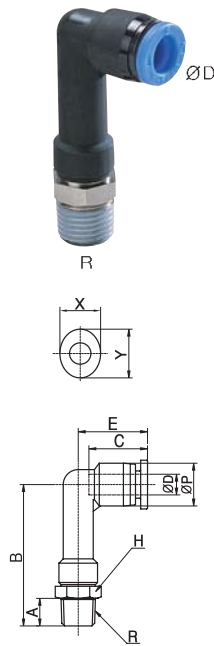


MODEL [ØD-T]

| Tube (Metric) - Thread(G) | | | |
|---------------------------|----|------|--|
| MODEL | ØD | R | |
| PLL 04-G01 | 4 | G1/8 | |
| PLL 04-G02 | 4 | G1/4 | |
| PLL 04-G03 | 4 | G3/8 | |
| PLL 06-G01 | 6 | G1/8 | |
| PLL 06-G02 | 6 | G1/4 | |
| PLL 06-G03 | 6 | G3/8 | |
| PLL 06-G04 | 6 | G1/2 | |
| PLL 08-G01 | 8 | G1/8 | |
| PLL 08-G02 | 8 | G1/4 | |
| PLL 08-G03 | 8 | G3/8 | |
| PLL 08-G04 | 8 | G1/2 | |
| PLL 10-G01 | 10 | G1/8 | |
| PLL 10-G02 | 10 | G1/4 | |
| PLL 10-G03 | 10 | G3/8 | |
| PLL 10-G04 | 10 | G1/2 | |
| PLL 12-G01 | 12 | G1/8 | |
| PLL 12-G02 | 12 | G1/4 | |
| PLL 12-G03 | 12 | G3/8 | |
| PLL 12-G04 | 12 | G1/2 | |
| PLL 16-G04 | 16 | G1/2 | |

PLLP

Union Straight



MODEL [ØD-T]

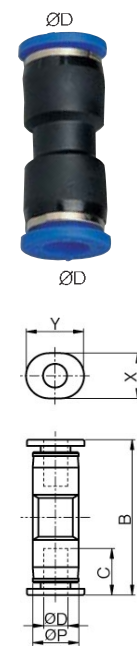
| Tube (Metric) - Thread(R) | | |
|---------------------------|----|-------|
| MODEL | ØD | R |
| PLLP 04-M5 | 4 | M5 |
| PLLP 04-M6 | 4 | M6 |
| PLLP 04-01 | 4 | PT1/8 |
| PLLP 04-02 | 4 | PT1/4 |
| PLLP 04-03 | 4 | PT3/8 |
| PLLP 06-M5 | 6 | M5 |
| PLLP 06-M6 | 6 | M6 |
| PLLP 06-01 | 6 | PT1/8 |
| PLLP 06-02 | 6 | PT1/4 |
| PLLP 06-03 | 6 | PT3/8 |
| PLLP 06-04 | 6 | PT1/2 |
| PLLP 08-01 | 8 | PT1/8 |
| PLLP 08-02 | 8 | PT1/4 |
| PLLP 08-03 | 8 | PT3/8 |
| PLLP 08-04 | 8 | PT1/2 |
| PLLP 10-01 | 10 | PT1/8 |
| PLLP 10-02 | 10 | PT1/4 |
| PLLP 10-03 | 10 | PT3/8 |
| PLLP 10-04 | 10 | PT1/2 |
| PLLP 12-01 | 12 | PT1/8 |
| PLLP 12-02 | 12 | PT1/4 |
| PLLP 12-03 | 12 | PT3/8 |
| PLLP 12-04 | 12 | PT1/2 |

| Tube (Inch) - Thread(R) | | |
|-------------------------|------|-------|
| MODEL | ØD | R |
| PLLP 5/32-R01 | 5/32 | PT1/8 |
| PLLP 5/32-R02 | 5/32 | PT1/4 |
| PLLP 5/32-R03 | 5/32 | PT3/8 |
| PLLP 1/4-R01 | 1/4 | PT1/8 |
| PLLP 1/4-R02 | 1/4 | PT1/4 |
| PLLP 1/4-R03 | 1/4 | PT3/8 |
| PLLP 1/4-R04 | 1/4 | PT1/2 |
| PLLP 5/16-R01 | 5/16 | PT1/8 |
| PLLP 5/16-R02 | 5/16 | PT1/4 |
| PLLP 5/16-R03 | 5/16 | PT3/8 |
| PLLP 5/16-R04 | 5/16 | PT1/2 |
| PLLP 3/8-R01 | 3/8 | PT1/8 |
| PLLP 3/8-R02 | 3/8 | PT1/4 |
| PLLP 3/8-R03 | 3/8 | PT3/8 |
| PLLP 3/8-R04 | 3/8 | PT1/2 |
| PLLP 1/2-R01 | 1/2 | PT1/8 |
| PLLP 1/2-R02 | 1/2 | PT1/4 |
| PLLP 1/2-R03 | 1/2 | PT3/8 |
| PLLP 1/2-R04 | 1/2 | PT1/2 |

| Tube (Inch) - Thread (NPT) | | |
|----------------------------|------|--------|
| MODEL | ØD | R |
| PLLP 5/32-U10 | 5/32 | U10U |
| PLLP 5/32-N01 | 5/32 | NPT1/8 |
| PLLP 5/32-N02 | 5/32 | NPT1/4 |
| PLLP 5/32-N03 | 5/32 | NPT3/8 |
| PLLP 1/4-U10 | 1/4 | U10U |
| PLLP 1/4-N01 | 1/4 | NPT1/8 |
| PLLP 1/4-N02 | 1/4 | NPT1/4 |
| PLLP 1/4-N03 | 1/4 | NPT3/8 |
| PLLP 1/4-N04 | 1/4 | NPT1/2 |
| PLLP 5/16-N01 | 5/16 | NPT1/8 |
| PLLP 5/16-N02 | 5/16 | NPT1/4 |
| PLLP 5/16-N03 | 5/16 | NPT3/8 |
| PLLP 5/16-N04 | 5/16 | NPT1/2 |
| PLLP 3/8-N01 | 3/8 | NPT1/8 |
| PLLP 3/8-N02 | 3/8 | NPT1/4 |
| PLLP 3/8-N03 | 3/8 | NPT3/8 |
| PLLP 3/8-N04 | 3/8 | NPT1/2 |
| PLLP 1/2-N02 | 1/2 | NPT1/4 |
| PLLP 1/2-N03 | 1/2 | NPT3/8 |
| PLLP 1/2-N04 | 1/2 | NPT1/2 |

PUC

Union Straight



MODEL [ØD-T]

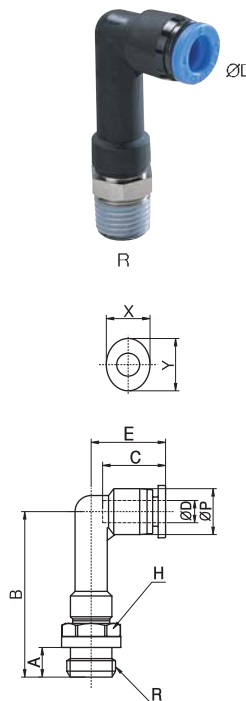
| Tube (Metric) - Thread(R) | |
|---------------------------|----|
| MODEL | ØD |
| PUC 04 | 4 |
| PUC 06 | 6 |
| PUC 08 | 8 |
| PUC 10 | 10 |
| PUC 12 | 12 |
| PUC 16 | 16 |

| Tube (Inch) - Thread(R) | |
|-------------------------|------|
| MODEL | ØD |
| PUC 5/32 | 5/32 |
| PUC 3/16 | 3/16 |
| PUC 1/4 | 1/4 |
| PUC 5/16 | 5/16 |
| PUC 3/8 | 3/8 |
| PUC 1/2 | 1/2 |

| Tube (Inch) - Thread (NPT) | |
|----------------------------|------|
| MODEL | ØD |
| PUC 5/32 | 5/32 |
| PUC 3/16 | 3/16 |
| PUC 1/4 | 1/4 |
| PUC 5/16 | 5/16 |
| PUC 3/8 | 3/8 |
| PUC 1/2 | 1/2 |

PLLP-G

Extended Male Elbow

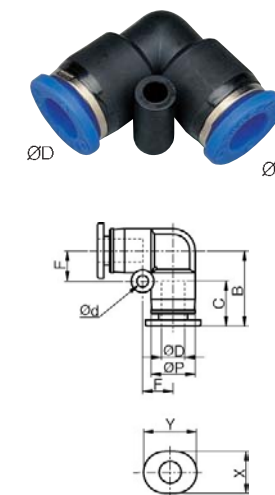


MODEL [ØD-T]

| Tube (Metric) - Thread(G) | | |
|---------------------------|----|------|
| MODEL | ØD | R |
| PLLP 04-G01 | 4 | G1/8 |
| PLLP 04-G02 | 4 | G1/4 |
| PLLP 04-G03 | 4 | G3/8 |
| PLLP 06-G01 | 6 | G1/8 |
| PLLP 06-G02 | 6 | G1/4 |
| PLLP 06-G03 | 6 | G3/8 |
| PLLP 06-G04 | 6 | G1/2 |
| PLLP 08-G01 | 8 | G1/8 |
| PLLP 08-G02 | 8 | G1/4 |
| PLLP 08-G03 | 8 | G3/8 |
| PLLP 08-G04 | 8 | G1/2 |
| PLLP 10-G01 | 10 | G1/8 |
| PLLP 10-G02 | 10 | G1/4 |
| PLLP 10-G03 | 10 | G3/8 |
| PLLP 10-G04 | 10 | G1/2 |
| PLLP 12-G01 | 12 | G1/8 |
| PLLP 12-G02 | 12 | G1/4 |
| PLLP 12-G03 | 12 | G3/8 |
| PLLP 12-G04 | 12 | G1/2 |

PUL

Union Elbow



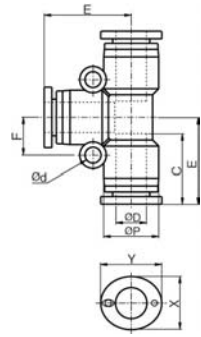
MODEL [ØD-T]

| Tube (Metric) - Thread(R) | |
|---------------------------|----|
| MODEL | ØD |
| PUL 04 | 4 |
| PUL 06 | 6 |
| PUL 08 | 8 |
| PUL 10 | 10 |
| PUL 12 | 12 |
| PUL 16 | 16 |

| Tube (Inch) - Thread(R) | |
|-------------------------|------|
| MODEL | ØD |
| PUL 5/32 | 5/32 |
| PUL 3/16 | 3/16 |
| PUL 1/4 | 1/4 |
| PUL 5/16 | 5/16 |
| PUL 3/8 | 3/8 |
| PUL 1/2 | 1/2 |

PUT

Union Tee



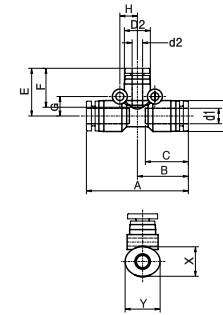
MODEL [ØD-T]

| Tube (Metric) - Thread(R) | |
|---------------------------|----|
| MODEL | ØD |
| PUT 04 | 4 |
| PUT 06 | 6 |
| PUT 08 | 8 |
| PUT 10 | 10 |
| PUT 12 | 12 |
| PUT 16 | 16 |

| Tube (Inch) - Thread(R) | |
|-------------------------|------|
| MODEL | ØD |
| PUT 5/32 | 5/32 |
| PUT 3/16 | 3/16 |
| PUT 1/4 | 1/4 |
| PUT 5/16 | 5/16 |
| PUT 3/8 | 3/8 |
| PUT 1/2 | 1/2 |

PUG

Different Dia of Union Tee



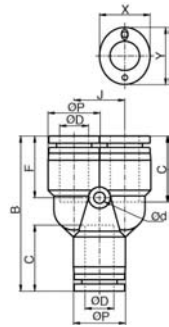
MODEL [ØD-T]

| Tube (Metric) - Thread(R) | | |
|---------------------------|-----|-----|
| MODEL | ØD1 | ØD2 |
| PUG 06-04 | 6 | 4 |
| PUG 08-04 | 8 | 4 |
| PUG 08-06 | 8 | 6 |
| PUG 10-06 | 10 | 6 |
| PUG 10-08 | 10 | 8 |
| PUG 12-08 | 12 | 8 |
| PUG 12-10 | 12 | 10 |

| Tube (Inch) - Thread (NPT) | | |
|----------------------------|------|------|
| MODEL | ØD1 | ØD2 |
| PUG 1/4-5/32 | 1/4 | 5/32 |
| PUG 5/16-5/32 | 5/16 | 5/32 |
| PUG 5/16-1/4 | 5/16 | 1/4 |
| PUG 3/8-1/4 | 3/8 | 1/4 |
| PUG 3/8-5/16 | 3/8 | 5/16 |
| PUG 1/2-5/16 | 1/2 | 5/16 |
| PUG 1/2-3/8 | 1/2 | 3/8 |

PY

Union Y



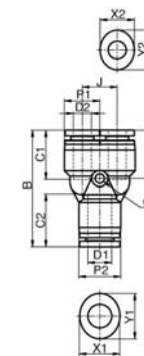
MODEL [ØD-T]

| Tube (Metric) - Thread(R) | |
|---------------------------|----|
| MODEL | ØD |
| PY 04 | 4 |
| PY 06 | 6 |
| PY 08 | 8 |
| PY 10 | 10 |
| PY 12 | 12 |

| Tube (Inch) - Thread(R) | |
|-------------------------|------|
| MODEL | ØD |
| PY 5/32 | 5/32 |
| PY 3/16 | 3/16 |
| PY 1/4 | 1/4 |
| PY 5/16 | 5/16 |
| PY 3/8 | 3/8 |
| PY 1/2 | 1/2 |

PW

Reducer Y



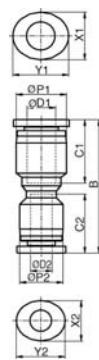
MODEL [ØD-T]

| Tube (Metric) - Thread(R) | | |
|---------------------------|-----|-----|
| MODEL | ØD1 | ØD2 |
| PW 06-04 | 6 | 4 |
| PW 08-04 | 8 | 4 |
| PW 08-06 | 8 | 6 |
| PW 10-06 | 10 | 6 |
| PW 10-08 | 10 | 8 |
| PW 12-08 | 12 | 8 |
| PW 12-10 | 12 | 10 |

| Tube (Inch) - Thread (NPT) | | |
|----------------------------|------|------|
| MODEL | ØD1 | ØD2 |
| PW 3/16-5/32 | 3/16 | 5/32 |
| PW 1/4-5/32 | 1/4 | 5/32 |
| PW 1/4-3/16 | 1/4 | 3/16 |
| PW 5/16-5/32 | 5/16 | 5/32 |
| PW 5/16-1/4 | 5/16 | 1/4 |
| PW 3/8-1/4 | 3/8 | 1/4 |
| PW 3/8-5/16 | 3/8 | 5/16 |
| PW 1/2-5/16 | 1/2 | 5/16 |
| PW 1/2-3/8 | 1/2 | 3/8 |

PG

Reducer



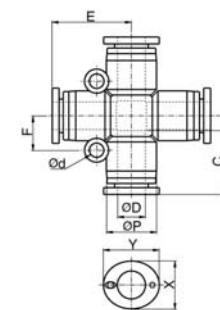
MODEL [ØD-T]

| Tube (Metric) - Thread(R) | | |
|---------------------------|-----|-----|
| MODEL | ØD1 | ØD2 |
| PG 06-04 | 6 | 4 |
| PG 08-04 | 8 | 4 |
| PG 08-06 | 8 | 6 |
| PG 10-06 | 10 | 6 |
| PG 10-08 | 10 | 8 |
| PG 12-08 | 12 | 8 |
| PG 12-10 | 12 | 10 |
| PG 16-12 | 16 | 12 |

| Tube (Inch) - Thread (NPT) | | |
|----------------------------|------|------|
| MODEL | ØD1 | ØD2 |
| PG 3/16-5/32 | 3/16 | 5/32 |
| PG 1/4-5/32 | 1/4 | 5/32 |
| PG 1/4-3/16 | 1/4 | 3/16 |
| PG 5/16-5/32 | 5/16 | 5/32 |
| PG 5/16-1/4 | 5/16 | 1/4 |
| PG 3/8-1/4 | 3/8 | 1/4 |
| PG 3/8-5/16 | 3/8 | 5/16 |
| PG 1/2-5/16 | 1/2 | 5/16 |
| PG 1/2-3/8 | 1/2 | 3/8 |

PZA

Union Cross



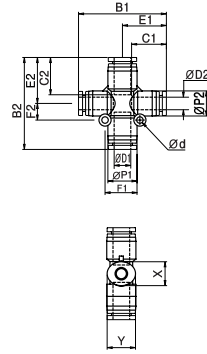
MODEL [ØD-T]

| Tube (Metric) - Thread(R) | |
|---------------------------|----|
| MODEL | ØD |
| PZA 04 | 4 |
| PZA 06 | 6 |
| PZA 08 | 8 |
| PZA 10 | 10 |
| PZA 12 | 12 |

| Tube (Inch) - Thread (NPT) | |
|----------------------------|------|
| MODEL | ØD |
| PZA 5/32 | 5/32 |
| PZA 3/16 | 3/16 |
| PZA 1/4 | 1/4 |
| PZA 5/16 | 5/16 |
| PZA 3/8 | 3/8 |
| PZA 1/2 | 1/2 |

PZA22

Different Dia of Union Cross(2/2)



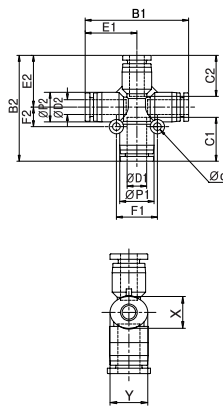
MODEL [ØD-T]

| Tube (Metric) - Thread(R) | | | |
|---------------------------|-----|-----|--|
| MODEL | ØD1 | ØD2 | |
| PZA22 08-06 | 8 | 6 | |
| PZA22 10-08 | 10 | 8 | |
| PZA22 12-10 | 12 | 10 | |

| Tube (Inch) - Thread (NPT) | | | |
|----------------------------|------|------|--|
| MODEL | ØD1 | ØD2 | |
| PZA22 5/16-1/4 | 5/16 | 1/4 | |
| PZA22 3/8-5/16 | 3/8 | 5/16 | |
| PZA22 1/2-3/8 | 1/2 | 3/8 | |

PZA31

Different Dia of Union Cross(3/1)



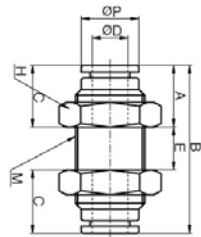
MODEL [ØD-T]

| Tube (Metric) - Thread(R) | | | |
|---------------------------|-----|-----|--|
| MODEL | ØD1 | ØD2 | |
| PZA31 08-06 | 8 | 6 | |
| PZA31 10-08 | 10 | 8 | |
| PZA31 12-10 | 12 | 10 | |

| Tube (Inch) - Thread (NPT) | | | |
|----------------------------|------|------|--|
| MODEL | ØD1 | ØD2 | |
| PZA31 5/16-1/4 | 5/16 | 1/4 | |
| PZA31 3/8-5/16 | 3/8 | 5/16 | |
| PZA31 1/2-3/8 | 1/2 | 3/8 | |

PMM

Bulkhead Union



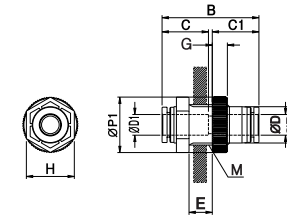
MODEL [ØD-T]

| Tube (Metric) - Thread(R) | | |
|---------------------------|----|--|
| MODEL | ØD | |
| PMM 04 | 4 | |
| PMM 06 | 6 | |
| PMM 08 | 8 | |
| PMM 10 | 10 | |
| PMM 12 | 12 | |

| Tube (Metric) - Thread(R) | | |
|---------------------------|------|--|
| MODEL | ØD | |
| PMM 5/32 | 5/32 | |
| PMM 3/16 | 3/16 | |
| PMM 1/4 | 1/4 | |
| PMM 5/16 | 5/16 | |
| PMM 3/8 | 3/8 | |
| PMM 1/2 | 1/2 | |

PPM

Bulkhead Union P



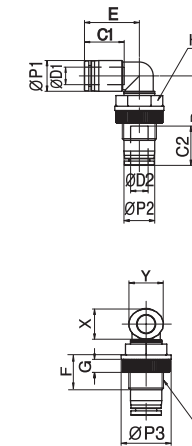
MODEL [ØD-T]

| Tube (Metric) - Thread(R) | | |
|---------------------------|----|--|
| MODEL | ØD | |
| PPM 04 | 4 | |
| PPM 06 | 6 | |
| PPM 08 | 8 | |
| PPM 10 | 10 | |
| PPM 12 | 12 | |

| Tube (Metric) - Thread(R) | | |
|---------------------------|------|--|
| MODEL | ØD | |
| PPM 3/16 | 3/16 | |
| PPM 1/4 | 1/4 | |
| PPM 3/8 | 3/8 | |
| PPM 1/2 | 1/2 | |

PLM

Bulkhead Union P



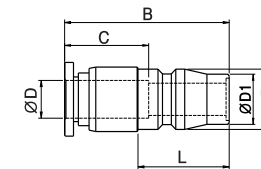
MODEL [ØD-T]

| Tube (Metric) - Thread(R) | | |
|---------------------------|----|--|
| MODEL | ØD | |
| PLM 04 | 4 | |
| PLM 06 | 6 | |
| PLM 08 | 8 | |
| PLM 10 | 10 | |
| PLM 12 | 12 | |

| Tube (Metric) - Thread(R) | | |
|---------------------------|------|--|
| MODEL | ØD | |
| PLM 3/16 | 3/16 | |
| PLM 1/4 | 1/4 | |
| PLM 3/8 | 3/8 | |
| PLM 1/2 | 1/2 | |

PCP

Straight Ace Coupler Plug

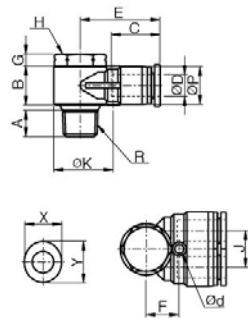


MODEL [ØD-T]

| Tube (Metric) - Thread(R) | | |
|---------------------------|----|--|
| MODEL | ØD | |
| PCP 04 | 4 | |
| PCP 06 | 6 | |
| PCP 08 | 8 | |
| PCP 10 | 10 | |
| PCP 12 | 12 | |
| PCP 16 | 16 | |

PA

Dual Male Banjo



MODEL [ØD-T]

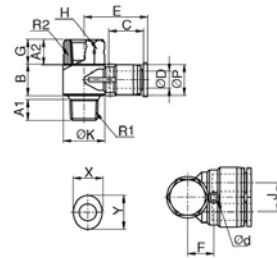
| Tube (Metric) - Thread(R) | | | | |
|---------------------------|----|------|------|--|
| MODEL | ØD | R | ØP | |
| PA 04-M5 | 4 | M5 | 10.4 | |
| PA 06-01 | 6 | R1/8 | 12.4 | |
| PA 08-02 | 8 | R1/4 | 14.4 | |
| PA 10-02 | 10 | R1/4 | 17.6 | |
| PA 10-03 | 12 | R3/8 | 17.6 | |
| PA 12-04 | 16 | R1/2 | 21 | |

| Tube (Inch) - Thread (NPT) | | | | |
|----------------------------|------|-----------|------|--|
| MODEL | ØD | R | ØP | |
| PA 5/32-U10U | 5/32 | UNF10 *32 | 10 | |
| PA 3/16-N01U | 3/16 | NPT1/8 | 12.5 | |
| PA 1/4-N01U | 1/4 | NPT1/8 | 14.4 | |
| PA 5/16-N02U | 5/16 | NPT1/4 | 18 | |
| PA 3/8-N03U | 3/8 | NPT3/8 | 21 | |
| PA 1/2-N04U | 1/2 | NPT1/2 | 21 | |

*Rotating body construction after a proper installation.

PAF

Dual Female Banjo



MODEL [ØD-T]

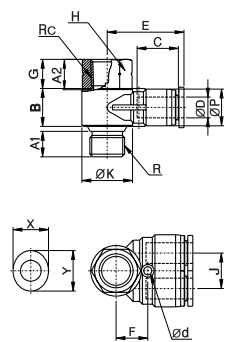
| Tube (Metric) - Thread(R) | | | | |
|---------------------------|----|------|------|--|
| MODEL | ØD | R | Fc | |
| PAF 04-M5 | 4 | M5 | M5 | |
| PAF 06-01 | 6 | R1/8 | R1/8 | |
| PAF 08-02 | 8 | R1/4 | R1/4 | |
| PAF 10-03 | 10 | R3/8 | R3/8 | |
| PAF 12-04 | 12 | R1/2 | R1/2 | |

| Tube (Inch) - Thread (NPT) | | | | |
|----------------------------|------|-----------|-----------|--|
| MODEL | ØD | R | Fc | |
| PAF 5/32-U10U | 5/32 | UNF10 *32 | UNF10 *32 | |
| PAF 3/16-N01U | 3/16 | NPT1/8 | NPT1/8 | |
| PAF 1/4-N01U | 1/4 | NPT1/8 | NPT1/8 | |
| PAF 5/16-N02U | 5/16 | NPT1/4 | NPT1/4 | |
| PAF 3/8-N03U | 3/8 | NPT3/8 | NPT3/8 | |
| PAF 1/2-N04U | 1/2 | NPT1/2 | NPT1/2 | |

*Rotating body construction after a proper installation.

PAF-G

Dual Female Banjo

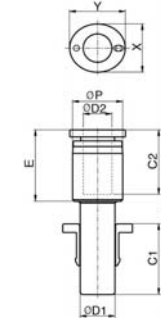


Tube (Metric) - Thread(G)

| MODEL | ØD | R | Fc | |
|------------|----|------|------|--|
| PAF 06-G01 | 6 | G1/8 | G1/8 | |
| PAF 08-G02 | 8 | G1/4 | G1/4 | |
| PAF 10-G03 | 10 | G3/8 | G3/8 | |
| PAF 12-G04 | 12 | G1/2 | G1/2 | |

PGJ

Plug-In Reducer



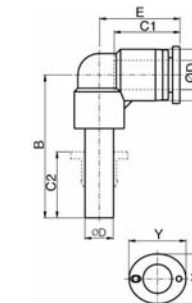
MODEL [ØD-T]

| Tube (Metric) - Thread(R) | | | |
|---------------------------|-----|-----|--|
| MODEL | ØD1 | ØD2 | |
| PGJ 06-04 | 6 | 4 | |
| PGJ 08-04 | 8 | 4 | |
| PGJ 08-06 | 8 | 6 | |
| PGJ 10-06 | 10 | 6 | |
| PGJ 10-08 | 10 | 8 | |
| PGJ 12-06 | 12 | 6 | |
| PGJ 12-08 | 12 | 8 | |
| PGJ 12-10 | 12 | 10 | |

| Tube (Inch) - Thread (NPT) | | | |
|----------------------------|------|------|--|
| MODEL | ØD1 | ØD2 | |
| PGJ 1/4-5/32 | 1/4 | 5/32 | |
| PGJ 5/16-5/32 | 5/16 | 5/32 | |
| PGJ 5/16-1/4 | 5/16 | 1/4 | |
| PGJ 3/8-1/4 | 3/8 | 1/4 | |
| PGJ 3/8-5/16 | 3/8 | 5/16 | |
| PGJ 1/2-1/4 | 1/2 | 1/4 | |
| PGJ 1/2-5/16 | 1/2 | 5/16 | |
| PGJ 1/2-3/8 | 1/2 | 3/8 | |

PLJ

Plug-In Elbow



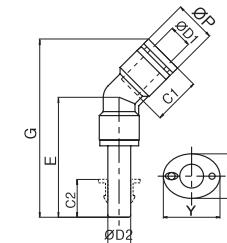
MODEL [ØD-T]

| Tube (Metric) - Thread(R) | | |
|---------------------------|----|--|
| MODEL | ØD | |
| PLJ 04 | 4 | |
| PLJ 06 | 6 | |
| PLJ 08 | 8 | |
| PLJ 10 | 10 | |
| PLJ 12 | 12 | |
| PLJ 16 | 16 | |

| Tube (Inch) - Thread (NPT) | | |
|----------------------------|------|--|
| MODEL | ØD | |
| PLJ 5/32 | 5/32 | |
| PLJ 3/16 | 3/16 | |
| PLJ 1/4 | 1/4 | |
| PLJ 5/16 | 5/16 | |
| PLJ 3/8 | 3/8 | |
| PLJ 1/2 | 1/2 | |

PLJ45

Plug-In Extended Elbow



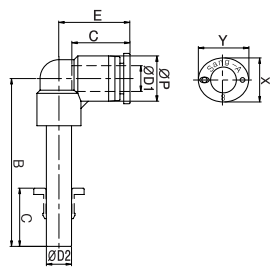
MODEL [ØD-T]

| Tube (Metric) - Thread(R) | | |
|---------------------------|-----|--|
| MODEL | ØD1 | |
| PLJ45 04 | 4 | |
| PLJ45 06 | 6 | |
| PLJ45 08 | 8 | |
| PLJ45 10 | 10 | |
| PLJ45 12 | 12 | |

| Tube (Inch) - Thread (NPT) | | |
|----------------------------|------|--|
| MODEL | ØD1 | |
| PLJ45 5/32 | 5/32 | |
| PLJ45 3/16 | 3/16 | |
| PLJ45 1/4 | 1/4 | |
| PLJ45 5/16 | 5/16 | |
| PLJ45 3/8 | 3/8 | |
| PLJ45 1/2 | 1/2 | |

PLLJ

Plug-In Extended Elbow



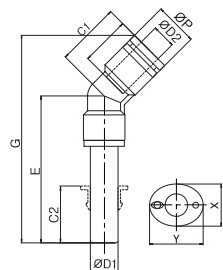
MODEL [ØD-T]

| Tube (Metric) - Thread(R) | |
|---------------------------|----|
| MODEL | ØD |
| PLLJ 04 | 4 |
| PLLJ 06 | 6 |
| PLLJ 08 | 8 |
| PLLJ 10 | 10 |
| PLLJ 12 | 12 |
| PLLJ 16 | 16 |

| Tube (Inch) - Thread (NPT) | |
|----------------------------|------|
| MODEL | ØD |
| PLLJ 5/32 | 5/32 |
| PLLJ 3/16 | 3/16 |
| PLLJ 1/4 | 1/4 |
| PLLJ 5/16 | 5/16 |
| PLLJ 3/8 | 3/8 |
| PLLJ 1/2 | 1/2 |

PLGJ45

Plug-In Reducer Elbow



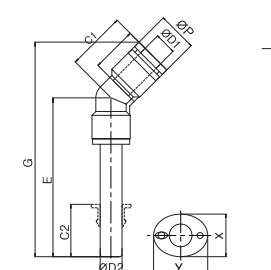
MODEL [ØD-T]

| Tube (Metric) - Thread(R) | | |
|---------------------------|-----|-----|
| MODEL | ØD1 | ØD2 |
| PLGJ45 06-04 | 6 | 4 |
| PLGJ45 08-06 | 8 | 6 |
| PLGJ45 10-08 | 10 | 8 |
| PLGJ45 12-10 | 12 | 10 |

| Tube (Inch) - Thread (NPT) | | |
|----------------------------|------|------|
| MODEL | ØD1 | ØD2 |
| PLGJ45 3/16-5/32 | 3/16 | 5/32 |
| PLGJ45 1/4-5/32 | 1/4 | 5/32 |
| PLGJ45 1/4-3/16 | 1/4 | 3/16 |
| PLGJ45 5/16-1/4 | 5/16 | 1/4 |
| PLGJ45 3/8-5/16 | 3/8 | 5/16 |
| PLGJ45 1/2-3/8 | 1/2 | 3/8 |

PLLJ45

Plug-In Reducer Elbow



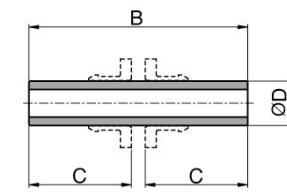
MODEL [ØD-T]

| Tube (Metric) - Thread(R) | |
|---------------------------|-----|
| MODEL | ØD1 |
| PLLJ45 04 | 4 |
| PLLJ45 06 | 6 |
| PLLJ45 08 | 8 |
| PLLJ45 10 | 10 |
| PLLJ45 12 | 12 |

| Tube (Inch) - Thread (NPT) | |
|----------------------------|------|
| MODEL | ØD1 |
| PLLJ45 5/32 | 5/32 |
| PLLJ45 3/16 | 3/16 |
| PLLJ45 1/4 | 1/4 |
| PLLJ45 5/16 | 5/16 |
| PLLJ45 3/8 | 3/8 |
| PLLJ45 1/2 | 1/2 |

PIJ

Tube Splicer



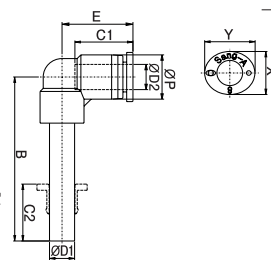
MODEL [ØD-T]

| Tube (Metric) - Thread(R) | |
|---------------------------|----|
| MODEL | ØD |
| PIJ 04 | 4 |
| PIJ 06 | 6 |
| PIJ 08 | 8 |
| PIJ 10 | 10 |
| PIJ 12 | 12 |
| PIJ 16 | 16 |

| Tube (Metric) - Thread(R) | |
|---------------------------|------|
| MODEL | ØD |
| PIJ 5/32 | 5/32 |
| PIJ 3/16 | 3/16 |
| PIJ 1/4 | 1/4 |
| PIJ 5/16 | 5/16 |
| PIJ 3/8 | 3/8 |
| PIJ 1/2 | 1/2 |

PLGJ

Plug-In Reducer Elbow



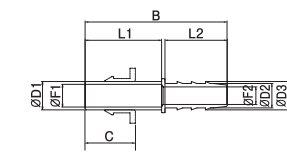
MODEL [ØD-T]

| Tube (Metric) - Thread(R) | | |
|---------------------------|-----|-----|
| MODEL | ØD1 | ØD2 |
| PLGJ 06-04 | 6 | 4 |
| PLGJ 08-06 | 8 | 6 |
| PLGJ 10-08 | 10 | 8 |
| PLGJ 12-10 | 12 | 10 |

| Tube (Inch) - Thread (NPT) | | |
|----------------------------|------|------|
| MODEL | ØD1 | ØD2 |
| PLGJ 3/16-5/32 | 3/16 | 5/32 |
| PLGJ 1/4-5/32 | 1/4 | 5/32 |
| PLGJ 1/4-3/16 | 1/4 | 3/16 |
| PLGJ 5/16-1/4 | 5/16 | 1/4 |
| PLGJ 3/8-5/16 | 3/8 | 5/16 |
| PLGJ 1/2-3/8 | 1/2 | 3/8 |

PJH

Plug-In Extended Elbow

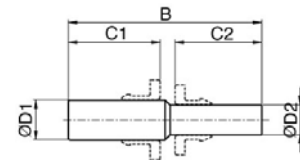


MODEL [ØD-T]

| Tube (Metric) - Thread(R) | | |
|---------------------------|-----|------|
| MODEL | ØD1 | ØD2 |
| PJH 04-04 | 4 | 4.8 |
| PJH 04-05 | 4 | 6 |
| PJH 06-05 | 6 | 5.9 |
| PJH 06-06 | 6 | 6.8 |
| PJH 08-06 | 8 | 6.8 |
| PJH 08-08 | 8 | 8.6 |
| PJH 10-08 | 10 | 8.6 |
| PJH 12-08 | 12 | 8.6 |
| PJH 12-10 | 12 | 10.6 |
| PJH 12-13 | 12 | 13.5 |
| PJH 14-14 | 14 | 14.7 |
| PJH 04-1/8 | 4 | 3.8 |
| PJH 08-1/4 | 8 | 7.3 |
| PJH 10-1/4 | 10 | 7.3 |
| PJH 12-1/2 | 12 | 13.2 |
| PJH 14-1/2 | 14 | 13.2 |

PIG

Reducer Tube Splicer



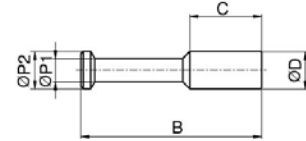
MODEL [ØD-T]

| Tube (Metric) - Thread(R) | | | |
|---------------------------|-----|-----|--|
| MODEL | ØD1 | ØD2 | |
| PIG 06-04 | 6 | 4 | |
| PIG 08-04 | 8 | 4 | |
| PIG 08-06 | 8 | 6 | |
| PIG 10-06 | 10 | 6 | |
| PIG 10-08 | 10 | 8 | |
| PIG 12-08 | 12 | 8 | |
| PIG 12-10 | 12 | 10 | |
| PIG 16-12 | 16 | 12 | |

| Tube (Metric) - Thread(R) | | | |
|---------------------------|------|------|--|
| MODEL | ØD | ØD2 | |
| PIG 3/16-5/32 | 3/16 | 5/32 | |
| PIG 1/4-3/16 | 1/4 | 3/16 | |
| PIG 1/4-5/32 | 1/4 | 5/32 | |
| PIG 5/16-5/32 | 5/16 | 5/32 | |
| PIG 5/16-1/4 | 5/16 | 1/4 | |
| PIG 3/8-1/4 | 3/8 | 1/4 | |
| PIG 3/8-5/16 | 3/8 | 5/16 | |
| PIG 1/2-5/16 | 1/2 | 5/16 | |
| PIG 1/2-3/8 | 1/2 | 3/8 | |

PP

Plug



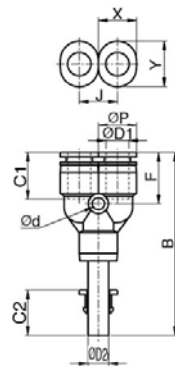
MODEL [ØD-T]

| Tube (Metric) - Thread(R) | |
|---------------------------|----|
| MODEL | ØD |
| PP 04 | 4 |
| PP 06 | 6 |
| PP 08 | 8 |
| PP 10 | 10 |
| PP 12 | 12 |
| PP 16 | 16 |

| Tube (Metric) - Thread(R) | |
|---------------------------|------|
| MODEL | ØD |
| PP 5/32 | 5/32 |
| PP 3/16 | 3/16 |
| PP 1/4 | 1/4 |
| PP 5/16 | 5/16 |
| PP 3/8 | 3/8 |
| PP 1/2 | 1/2 |

PYJ

Plug-In Y



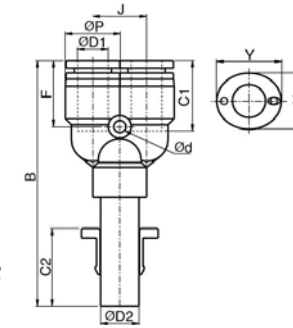
MODEL [ØD-T]

| Tube (Metric) - Thread(R) | |
|---------------------------|----|
| MODEL | ØD |
| PYJ 04 | 4 |
| PYJ 06 | 6 |
| PYJ 08 | 8 |
| PYJ 10 | 10 |
| PYJ 12 | 12 |

| Tube (Inch) - Thread (NPT) | |
|----------------------------|------|
| MODEL | ØD |
| PYJ 5/32 | 5/32 |
| PYJ 3/16 | 3/16 |
| PYJ 1/4 | 1/4 |
| PYJ 5/16 | 5/16 |
| PYJ 3/8 | 3/8 |
| PYJ 1/2 | 1/2 |

PWJ

Plug-In Reducer Y



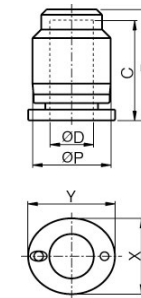
MODEL [ØD-T]

| Tube (Metric) - Thread(R) | | | |
|---------------------------|-----|-----|--|
| MODEL | ØD1 | ØD2 | |
| PWJ 06-04 | 6 | 4 | |
| PWJ 08-06 | 8 | 6 | |
| PWJ 10-08 | 10 | 8 | |
| PWJ 12-10 | 12 | 10 | |

| Tube (Inch) - Thread (NPT) | | | |
|----------------------------|------|------|--|
| MODEL | ØD1 | ØD2 | |
| PWJ 1/4-5/32 | 1/4 | 5/32 | |
| PWJ 5/16-1/4 | 5/16 | 1/4 | |
| PWJ 3/8-5/16 | 3/8 | 5/16 | |
| PWJ 1/2-3/8 | 1/2 | 3/8 | |

PPF

Cap



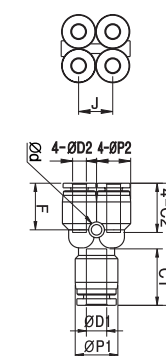
MODEL [ØD-T]

| Tube (Metric) - Thread(R) | |
|---------------------------|----|
| MODEL | ØD |
| PPF 04 | 4 |
| PPF 06 | 6 |
| PPF 08 | 8 |
| PPF 10 | 10 |
| PPF 12 | 12 |

| Tube (Metric) - Thread(R) | |
|---------------------------|------|
| MODEL | ØD |
| PPF 5/32 | 5/32 |
| PPF 3/16 | 3/16 |
| PPF 1/4 | 1/4 |
| PPF 5/16 | 5/16 |
| PPF 3/8 | 3/8 |
| PPF 1/2 | 1/2 |

PXG

Reducer Double Y Union



MODEL [ØD-T]

| Tube (Metric) - Thread(R) | | | |
|---------------------------|-----|-----|--|
| MODEL | ØD1 | ØD2 | |
| PXG 06-04 | 6 | 4 | |
| PXG 08-06 | 8 | 6 | |

| Tube (Inch) - Thread (NPT) | | | |
|----------------------------|------|------|--|
| MODEL | ØD1 | ØD2 | |
| PXG 1/4-5/32 | 1/4 | 5/32 | |
| PXG 5/16-1/4 | 5/16 | 1/4 | |

One-Touch Fittings

PXJ

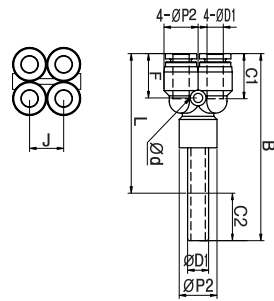
Reducer Double Y



MODEL [ØD-T]

| Tube (Metric) - Thread(R) | | |
|---------------------------|-----|-----|
| MODEL | ØD1 | ØD2 |
| PXJ 06-04 | 6 | 4 |
| PXJ 08-06 | 8 | 6 |

| Tube (Inch) - Thread (NPT) | | |
|----------------------------|------|------|
| MODEL | ØD1 | ØD2 |
| PXJ 1/4-5/32 | 1/4 | 5/32 |
| PXJ 5/16-1/4 | 5/16 | 1/4 |



PXT

Male Double Y



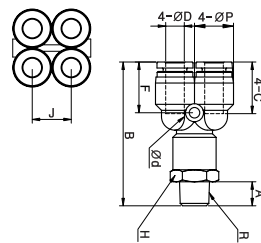
MODEL [ØD-T]

| Tube (Metric) - Thread(R) | | |
|---------------------------|----|------|
| MODEL | ØD | R |
| PXT 04-01 | 4 | R1/8 |
| PXT 04-02 | 4 | R1/4 |
| PXT 06-01 | 6 | R1/8 |
| PXT 06-02 | 6 | R1/4 |

| Tube (Inch) - Thread(R) | | |
|-------------------------|-----|------|
| MODEL | ØD | R |
| PXT 1/4-R01 | 1/4 | R1/8 |
| PXT 1/4-R02 | 1/4 | R1/4 |

| Tube (Inch) - Thread (NPT) | | |
|----------------------------|------|--------|
| MODEL | ØD | R |
| PXT 5/32-N01 | 5/32 | NPT1/8 |
| PXT 5/32-N02 | 5/32 | NPT1/4 |
| PXT 1/4-N01 | 1/4 | NPT1/8 |
| PXT 1/4-N02 | 1/4 | NPT1/4 |

*Rotating body construction after a proper installation.



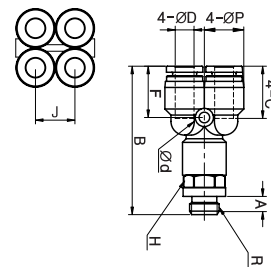
PXT-G

Male Double Y



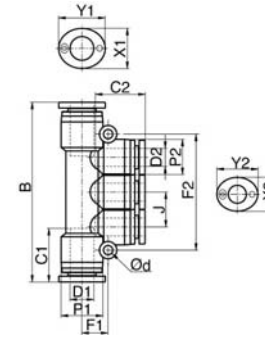
MODEL [ØD-T]

| Tube (Metric) - Thread(G) | | |
|---------------------------|----|------|
| MODEL | ØD | R |
| PXT 04-G01 | 4 | G1/8 |
| PXT 04-G02 | 4 | G1/4 |
| PXT 06-G01 | 6 | G1/8 |
| PXT 06-G02 | 6 | G1/4 |



PKG

Reducer Triple Branch Union



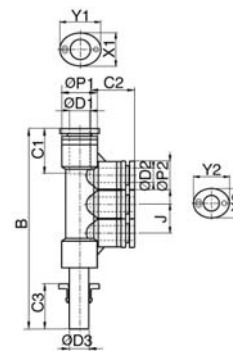
MODEL [ØD-T]

| Tube (Metric) - Thread(R) | | |
|---------------------------|-----|-----|
| MODEL | ØD1 | ØD2 |
| PKG 06-04 | 6 | 4 |
| PKG 08-04 | 8 | 4 |
| PKG 08-06 | 8 | 6 |
| PKG 10-06 | 10 | 6 |
| PKG 10-08 | 10 | 8 |

| Tube (Inch) - Thread (NPT) | | |
|----------------------------|------|------|
| MODEL | ØD1 | ØD2 |
| PKG 3/16-5/32 | 3/16 | 5/32 |
| PKG 5/16-5/32 | 5/16 | 5/32 |
| PKG 5/16-3/16 | 5/16 | 3/16 |
| PKG 5/16-1/4 | 5/16 | 1/4 |
| PKG 3/8-1/4 | 3/8 | 1/4 |
| PKG 3/8-5/16 | 3/8 | 5/16 |

PKJ

Plug-In Reducer Triple Branch



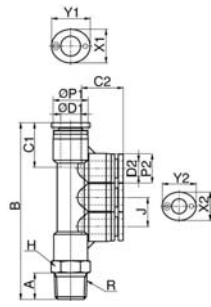
MODEL [ØD-T]

| Tube (Metric) - Thread(R) | | | |
|---------------------------|-----|-----|-----|
| MODEL | ØD1 | ØD2 | ØD3 |
| PKJ 06-04 | 6 | 4 | 6 |
| PKJ 08-04 | 8 | 4 | 8 |
| PKJ 08-06 | 8 | 6 | 8 |
| PKJ 10-06 | 10 | 6 | 10 |
| PKJ 10-08 | 10 | 8 | 10 |

| Tube (Inch) - Thread (NPT) | | | |
|----------------------------|------|------|------|
| MODEL | ØD1 | ØD2 | ØD3 |
| PKJ 3/16-5/32 | 3/16 | 5/32 | 3/16 |
| PKJ 1/4-5/32 | 1/4 | 5/32 | 1/4 |
| PKJ 5/16-5/32 | 5/16 | 5/32 | 5/16 |
| PKJ 5/16-3/16 | 5/16 | 3/16 | 5/16 |
| PKJ 5/16-1/4 | 5/16 | 1/4 | 5/16 |
| PKJ 3/8-5/16 | 3/8 | 5/16 | 3/8 |

PKD

Male Reducer Triple Branch



MODEL [ØD-T]

| Tube (Metric) - Thread(R) | | | |
|---------------------------|-----|-----|------|
| MODEL | ØD1 | ØD2 | R |
| PKD 06-04-01 | 6 | 4 | R1/8 |
| PKD 06-04-02 | 6 | 4 | R1/4 |
| PKD 08-04-02 | 8 | 4 | R1/4 |
| PKD 08-06-02 | 8 | 6 | R1/4 |
| PKD 08-06-03 | 8 | 6 | R3/8 |
| PKD 10-08-03 | 10 | 8 | R3/8 |

| Tube (Metric) - Thread(R) | | | |
|---------------------------|------|------|------|
| MODEL | ØD1 | ØD2 | R |
| PKD 3/16-5/32-R01 | 3/16 | 5/32 | R1/8 |
| PKD 5/16-5/32-R02 | 5/16 | 5/32 | R1/4 |
| PKD 5/16-3/16-R02 | 5/16 | 3/16 | R1/4 |
| PKD 5/16-1/4-R02 | 5/16 | 1/4 | R1/4 |
| PKD 5/16-1/4-R03 | 5/16 | 1/4 | R3/8 |
| PKD 3/8-5/16-R03 | 3/8 | 5/16 | R3/8 |

| Inch (Metric) - Thread(NPT) | | | |
|-----------------------------|------|------|--------|
| MODEL | ØD1 | ØD2 | R |
| PKD 3/16-5/32-N01U | 3/16 | 5/32 | NPT1/8 |
| PKD 1/4-5/32-N01U | 1/4 | 5/32 | NPT1/8 |
| PKD 1/4-5/32-N02U | 1/4 | 5/32 | NPT1/4 |
| PKD 5/16-5/32-N02U | 5/16 | 5/32 | NPT1/4 |
| PKD 5/16-3/16-N02U | 5/16 | 3/16 | NPT1/4 |
| PKD 5/16-1/4-N02U | 5/16 | 1/4 | NPT1/4 |
| PKD 5/16-1/4-N03U | 5/16 | 1/4 | NPT3/8 |
| PKD 3/8-5/16-N03U | 3/8 | 5/16 | NPT3/8 |

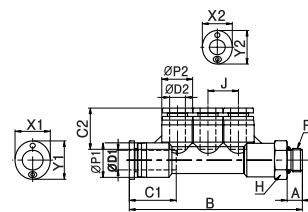
PKD-G

Male Reducer Triple Branch



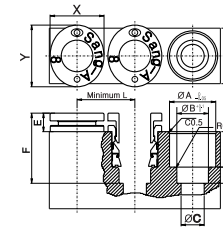
MODEL [ØD-T]

| Tube (Metric) - Thread(G) | | | |
|---------------------------|-----|-----|------|
| MODEL | ØD1 | ØD2 | R |
| PKD 06-04-G01 | 6 | 4 | G1/8 |
| PKD 08-04-G02 | 8 | 4 | G1/4 |
| PKD 08-06-G02 | 8 | 6 | G1/4 |
| PKD 10-08-G03 | 10 | 8 | G3/8 |



CAS

Insert-Tube



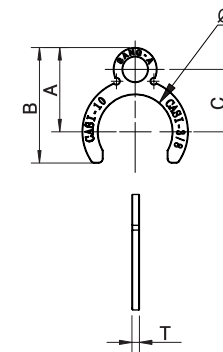
MODEL [ØD-T]

| Tube (Metric) - Thread(R) | | | | | | |
|---------------------------|----|------|------|-----|------|-----|
| MODEL | ØD | ØA | ØB | ØC | H | L |
| CAS-N04 | 4 | 8.1 | 4.2 | 2.5 | 7.8 | 3.5 |
| CAS-N06 | 6 | 10 | 6.2 | 4 | 8.2 | 4 |
| CAS-N08 | 8 | 12 | 8.2 | 6 | 9.2 | 4.5 |
| CAS-N10 | 10 | 15.1 | 10.2 | 8 | 10.2 | 5 |
| CAS-N12 | 12 | 17.7 | 12.2 | 10 | 12.2 | 5 |

| Inch (Metric) - Thread(NPT) | | | | | | |
|-----------------------------|------|------|-----|-----|------|-----|
| MODEL | ØD | ØA | ØB | ØC | H | L |
| CAS-N5/32 | 5/32 | 8 | 4.2 | 2.5 | 7.8 | 3.5 |
| CAS-N3/16 | 3/16 | 8.5 | 5 | 4 | 8.2 | 4 |
| CAS-N1/4 | 1/4 | 10 | 6.5 | 5 | 8.2 | 4 |
| CAS-N5/16 | 5/16 | 12 | 8.2 | 6 | 9.2 | 4.5 |
| CAS-N3/8 | 3/8 | 15.1 | 9.7 | 8 | 10.2 | 5 |
| CAS-N1/2 | 1/2 | 17.7 | 13 | 10 | 12.2 | 5 |

CASI

Insert-Tube Clip



MODEL [ØD-T]

| Tube (Metric) - Thread(R) | |
|---------------------------|----|
| MODEL | ØD |
| CASI 04 | 4 |
| CASI 06 | 6 |
| CASI 08 | 8 |
| CASI 10 | 10 |
| CASI 12 | 12 |

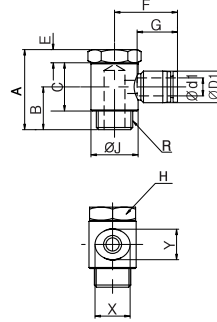
PGL(D1)

Single Universal Elbow



MODEL [ØD-T]

| Tube (Metric) - Thread(G) | | |
|---------------------------|----|------|
| MODEL | ØD | R |
| PGL 04-G01(1) | 4 | G1/8 |
| PGL 06-G01(1) | 6 | G1/8 |
| PGL 06-G02(1) | 6 | G1/4 |
| PGL 08-G01(1) | 8 | G1/8 |
| PGL 08-G02(1) | 8 | G1/4 |
| PGL 08-G03(1) | 8 | G3/8 |
| PGL 10-G02(1) | 10 | G1/4 |
| PGL 10-G03(1) | 10 | G3/8 |
| PGL 12-G03(1) | 12 | G3/8 |
| PGL 12-G04(1) | 12 | G1/2 |



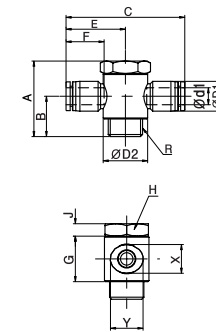
PGT(D1)

Single Universal Elbow



MODEL [ØD-T]

| Tube (Metric) - Thread(G) | | |
|---------------------------|----|------|
| MODEL | ØD | R |
| PGT 04-G01(1) | 4 | G1/8 |
| PGT 06-G01(1) | 6 | G1/8 |
| PGT 06-G02(1) | 6 | G1/4 |
| PGT 08-G01(1) | 8 | G1/8 |
| PGT 08-G02(1) | 8 | G1/4 |
| PGT 08-G03(1) | 8 | G3/8 |
| PGT 10-G02(1) | 10 | G1/4 |
| PGT 10-G03(1) | 10 | G3/8 |
| PGT 12-G03(1) | 12 | G3/8 |
| PGT 12-G04(1) | 12 | G1/2 |



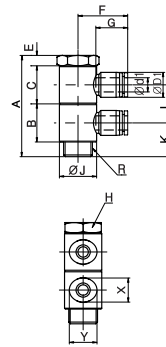
PGL(D2)

Double Universal Elbow



MODEL [ØD-T]

| Tube (Metric) - Thread(G) | | |
|---------------------------|----|------|
| MODEL | ØD | R |
| PGL 04-G01(2) | 4 | G1/8 |
| PGL 06-G01(2) | 6 | G1/8 |
| PGL 06-G02(2) | 6 | G1/4 |
| PGL 08-G01(2) | 8 | G1/8 |
| PGL 08-G02(2) | 8 | G1/4 |
| PGL 08-G03(2) | 8 | G3/8 |
| PGL 10-G02(2) | 10 | G1/4 |
| PGL 10-G03(2) | 10 | G3/8 |
| PGL 12-G03(2) | 12 | G3/8 |
| PGL 12-G04(2) | 12 | G1/2 |



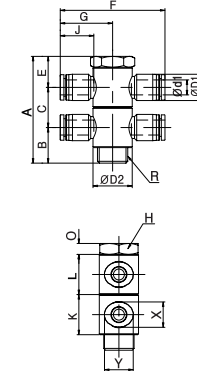
PGT(D2)

Double Universal Tee



MODEL [ØD-T]

| Tube (Metric) - Thread(G) | | |
|---------------------------|----|------|
| MODEL | ØD | R |
| PGT 04-G01(2) | 4 | G1/8 |
| PGT 06-G01(2) | 6 | G1/8 |
| PGT 06-G02(2) | 6 | G1/4 |
| PGT 08-G01(2) | 8 | G1/8 |
| PGT 08-G02(2) | 8 | G1/4 |
| PGT 08-G03(2) | 8 | G3/8 |
| PGT 10-G02(2) | 10 | G1/4 |
| PGT 10-G03(2) | 10 | G3/8 |
| PGT 12-G03(2) | 12 | G3/8 |
| PGT 12-G04(2) | 12 | G1/2 |



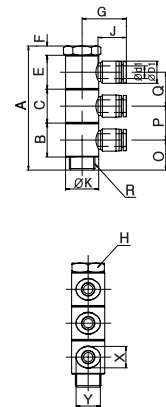
PGL(D3)

Triple Universal Elbow



MODEL [ØD-T]

| Tube (Metric) - Thread(G) | | |
|---------------------------|----|------|
| MODEL | ØD | R |
| PGL 04-G01(3) | 4 | G1/8 |
| PGL 06-G01(3) | 6 | G1/8 |
| PGL 06-G02(3) | 6 | G1/4 |
| PGL 08-G01(3) | 8 | G1/8 |
| PGL 08-G02(3) | 8 | G1/4 |
| PGL 08-G03(3) | 8 | G3/8 |
| PGL 10-G02(3) | 10 | G1/4 |
| PGL 10-G03(3) | 10 | G3/8 |
| PGL 12-G03(3) | 12 | G3/8 |
| PGL 12-G04(3) | 12 | G1/2 |



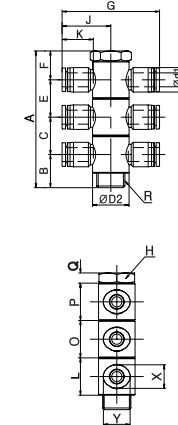
PGT(D3)

Triple Universal Tee



MODEL [ØD-T]

| Tube (Metric) - Thread(G) | | |
|---------------------------|----|------|
| MODEL | ØD | R |
| PGT 04-G01(3) | 4 | G1/8 |
| PGT 06-G01(3) | 6 | G1/8 |
| PGT 06-G02(3) | 6 | G1/4 |
| PGT 08-G01(3) | 8 | G1/8 |
| PGT 08-G02(3) | 8 | G1/4 |
| PGT 08-G03(3) | 8 | G3/8 |
| PGT 10-G02(3) | 10 | G1/4 |
| PGT 10-G03(3) | 10 | G3/8 |
| PGT 12-G03(3) | 12 | G3/8 |
| PGT 12-G04(3) | 12 | G1/2 |



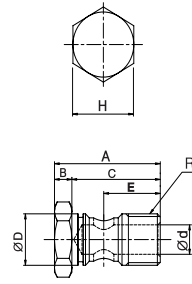
PGB(D1)



MODEL [ØD-T]

Tube (Metric) - Thread(G)

| MODEL | R |
|------------|------|
| PGB G01(1) | G1/8 |
| PGB G02(1) | G1/4 |
| PGB G03(1) | G3/8 |
| PGB G04(1) | G1/2 |



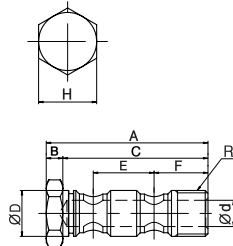
PGB(D2)



MODEL [ØD-T]

Tube (Metric) - Thread(G)

| MODEL | R |
|------------|------|
| PGB G01(2) | G1/8 |
| PGB G02(2) | G1/4 |
| PGB G03(2) | G3/8 |
| PGB G04(2) | G1/2 |



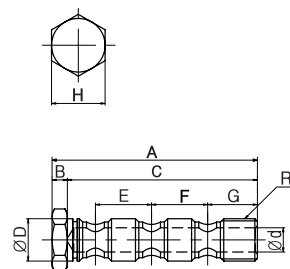
PGB(D3)



MODEL [ØD-T]

Tube (Metric) - Thread(G)

| MODEL | R |
|------------|------|
| PGB G01(3) | G1/8 |
| PGB G02(3) | G1/4 |
| PGB G03(3) | G3/8 |
| PGB G04(3) | G1/2 |



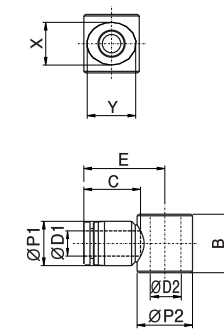
PGL



MODEL [ØD-T]

Tube (Metric) - Thread(G)

| MODEL | ØD | R |
|-------------|----|------|
| PGL 04-G01P | 4 | G1/8 |
| PGL 06-G01P | 6 | G1/8 |
| PGL 06-G02P | 6 | G1/4 |
| PGL 08-G01P | 8 | G1/8 |
| PGL 08-G02P | 8 | G1/4 |
| PGL 08-G03P | 8 | G3/8 |
| PGL 10-G02P | 10 | G1/4 |
| PGL 10-G03P | 10 | G3/8 |
| PGL 12-G03P | 12 | G3/8 |
| PGL 12-G04P | 12 | G1/2 |



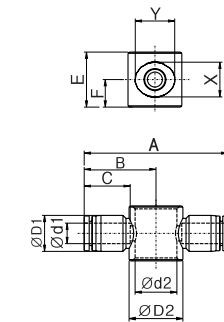
PGT



MODEL [ØD-T]

Tube (Metric) - Thread(G)

| MODEL | ØD | R |
|-------------|----|------|
| PGT 04-G01P | 4 | G1/8 |
| PGT 06-G01P | 6 | G1/8 |
| PGT 06-G02P | 6 | G1/4 |
| PGT 08-G01P | 8 | G1/8 |
| PGT 08-G02P | 8 | G1/4 |
| PGT 08-G03P | 8 | G3/8 |
| PGT 10-G02P | 10 | G1/4 |
| PGT 10-G03P | 10 | G3/8 |
| PGT 12-G03P | 12 | G3/8 |
| PGT 12-G04P | 12 | G1/2 |



PGO



MODEL [ØD-T]

Tube (Metric) - Thread(G)

| MODEL | R |
|---------|------|
| PGO G01 | G1/8 |
| PGO G02 | G1/4 |
| PGO G03 | G3/8 |
| PGO G04 | G1/2 |

