

Sang-A

Chemical Resistant Two Touch Fittings

Application

- Connector with nut-fitted used in pneumatic pressure and chemical industry piping.
- Be able to use with variety depend on user's environment.

Feature

- Excellent in corrosion resistance, chemical resistance.
- Hava semipermanent life expectancy for the products made of plastic.
- Products are packed and assembled after being washed in clean room.
- Excellent in no-rash and non-polliting for the products used with material made of PVDF.
- Have excellent effect in serious a vibrating part and moving because tube joints forced to be tightened.

Specification

Fluid	Water, Air, Oil, Liquid Chemical	
Working Pressure Range	0~10kgf/cm ² (0~980kPa)	0~145psi
Temperature Range	-20~120°C	-4°F~248°F
Applicable Tube Material	Polyurethane, Nylon, Teflon TUBE	

Produce Code System

CRTC	08	02
①	②	③

① Type

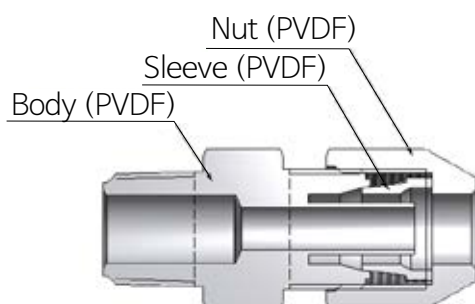
② Tube Dia (∅D)

Code	04	06	08	10	12
Dia	∅4	∅6	∅8	∅10	∅12

③ Thread Size

	Taper Pipe Thread			
Code	01	02	03	04
Size	R1/8	R1/4	R3/8	R1/2

Structure Diagram



Chemical Resistant Two Touch Fittings _ Product Feature List

CRTC
(Male Straight)



CRTCT
(Through Male Straight)



CRTL
(Male Elbow)



CRTT
(Male Branch Tee)



CRTST
(Male Run Tee)



CRTUC
(Union Straight)



CRTUL
(Union Elbow)



CRTUT
(Union Tee)



CR-NUT
(Nut)



CR-SLEEVE
(Sleeve)



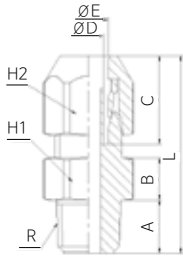
Caution

1. Avoid randomly product change.
2. Never over pushing to assemble product, it may cause damage.
3. Please check leakage before built.

Chemical Resistant Two Touch Fittings

CRTC

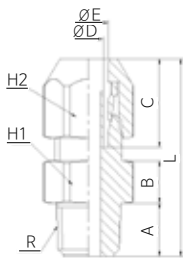
(Male Straight)



CODE	MODEL	TUBE SIZE	L	A	B	C	ϕD	ϕE	R	H1	H2	Orifice (ϕ mm)	W.G(g)	Q'ty/inbox
17010411	CRTC 0401	4X2	30.5	8.5	5.0	15.5	-	4.2	R1/8	12.0	12.0	2	3.6	50
17010611	CRTC 0601	6X4	34.5	8.5	6.0	17.0	4.0	6.2	R1/8	14.0	14.0	3	5.4	50
17010612	CRTC 0602	6X4	37.5	11.5	6.0	17.0	4.0	6.2	R1/4	14.0	14.0	3	5.8	50
17010811	CRTC 0801	8X6	39.5	8.5	9.0	19.0	6.0	8.2	R1/8	17.0	17.0	5	9.1	50
17010812	CRTC 0802	8X6	42.5	11.5	9.0	19.0	6.0	8.2	R1/4	17.0	17.0	5	9.5	40
17011012	CRTC 1002	10X8	45.5	11.5	9.0	22.0	8.0	10.2	R1/4	19.0	19.0	7	12.5	40
17011013	CRTC 1003	10X8	46.5	12.5	9.0	22.0	8.0	10.2	R3/8	19.0	19.0	7	13.3	40
17011213	CRTC 1203	12X10	50.5	12.5	9.0	27.0	10.0	12.2	R3/8	22.0	22.0	9	18.2	25
17011214	CRTC 1204	12X10	53.5	15.5	9.0	27.0	10.0	12.2	R1/2	22.0	22.0	9	19.7	25

CRTCT

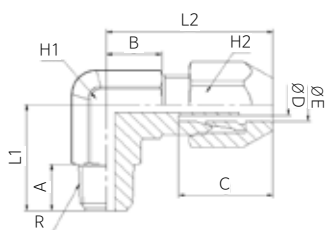
(Through Male Straight)



CODE	MODEL	TUBE SIZE	L	A	B	ϕC	R	H1	H2	Orifice (ϕ mm)	W.G(g)	Q'ty/inbox
17020411	CRTCT 0401	4	30.5	8.5	5.0	4.2	R1/8	12.0	12.0	4.2	3.7	50
17020611	CRTCT 0601	6	34.5	8.5	6.0	6.2	R1/8	14.0	14.0	6.2	4.9	50
17020612	CRTCT 0602	6	37.5	11.5	6.0	6.2	R1/4	14.0	14.0	6.2	6	50
17020812	CRTCT 0802	8	42.5	11.5	9.0	8.2	R1/4	17.0	17.0	8.2	8.9	40
17021013	CRTCT 1003	10	46.5	12.5	9.0	10.2	R3/8	19.0	19.0	10.2	12.1	25
17021214	CRTCT 1204	12	53.5	15.5	9.0	12.2	R1/2	22.0	22.0	12.2	18.9	25

CRTL

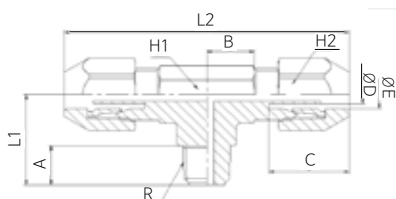
(Male Elbow)



																(mm)	
CODE	MODEL	TUBE SIZE	L1	L2	A	B	C	øD	øE	R	H1	H2	Orifice (ømm)	W.G(g)	Q'ty/inbox		
17030411	CRTL 0401	4X2	17.0	24.5	8.5	7.5	15.5	-	4.2	R1/8	8.0	12.0	2	4.1	50		
17030611	CRTL 0601	6X4	19.5	30	8.5	10.0	17.0	4.0	6.2	R1/8	11.0	14.0	3	7.3	50		
17030612	CRTL 0602	6X4	22.5	30	11.5	10.0	17.0	4.0	6.2	R1/4	11.0	14.0	3	8	50		
17030811	CRTL 0801	8X6	20.5	33	8.5	11.0	19.0	6.0	8.2	R1/8	12.0	17.0	5	9.9	40		
17030812	CRTL 0802	8X6	23.5	33	11.5	11.0	19.0	6.0	8.2	R1/4	12.0	17.0	5	10.5	40		
17031012	CRTL 1002	10X8	24.5	37	11.5	12.0	22.0	8.0	10.2	R1/4	14.0	19.0	7	13.4	40		
17031013	CRTL 1003	10X8	25.5	37	12.5	12.0	22.0	8.0	10.2	R3/8	14.0	19.0	7	14.4	40		
17031213	CRTL 1203	12X10	27.5	43	12.5	14.0	27.0	10.0	12.2	R3/8	17.0	22.0	9	20.6	25		
17031214	CRTL 1204	12X10	30.5	43	15.5	14.0	27.0	10.0	12.2	R1/2	17.0	22.0	9	22.8	25		

CRTT

(Male Branch Tee)

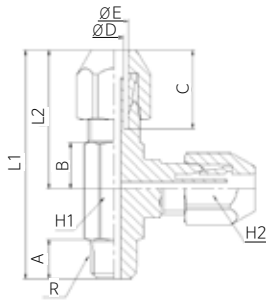


																(mm)	
CODE	MODEL	TUBE SIZE	L1	L2	A	B	C	øD	øE	R	H1	H2	Orifice (ømm)	W.G(g)	Q'ty/inbox		
17040411	CRTT 0401	4X2	17.0	49	8.5	7.5	15.5	-	4.2	R1/8	8.0	12.0	2	6.6	50		
17040611	CRTT 0601	6X4	19.5	60	8.5	10.0	17.0	4.0	6.2	R1/8	11.0	14.0	3	11.3	50		
17040612	CRTT 0602	6X4	22.5	60	11.5	10.0	17.0	4.0	6.2	R1/4	11.0	14.0	3	11.9	50		
17040811	CRTT 0801	8X6	20.5	66	8.5	11.0	19.0	6.0	8.2	R1/8	12.0	17.0	5	15.9	40		
17040812	CRTT 0802	8X6	23.5	66	11.5	11.0	19.0	6.0	8.2	R1/4	12.0	17.0	5	16.5	40		
17041012	CRTT 1002	10X8	24.5	74	11.5	12.0	22.0	8.0	10.2	R1/4	14.0	19.0	7	21.5	25		
17041013	CRTT 1003	10X8	25.5	74	12.5	12.0	22.0	8.0	10.2	R3/8	14.0	19.0	7	22.5	25		
17041213	CRTT 1203	12X10	27.5	86	12.5	14.0	27.0	10.0	12.2	R3/8	17.0	22.0	9	33.7	25		
17041214	CRTT 1204	12X10	30.5	86	15.5	14.0	27.0	10.0	12.2	R1/2	17.0	22.0	9	35.2	25		

Chemical Resistant Two Touch Fittings

CRTST

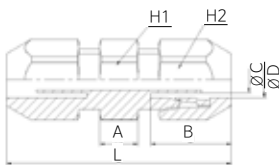
(Male Run Tee)



CODE	MODEL	TUBE SIZE	L1	L2	A	B	C	ØD	ØE	R	H1	H2	Orifice (Ømm)	W.G(g)	Q'ty/inbox
17050411	CRTST 0401	4X2	41.5	24.5	8.5	7.5	15.5	-	4.2	R1/8	H1	12.0	2	6.6	50
17050611	CRTST 0601	6X4	49.5	30	8.5	10.0	17.0	4.0	6.2	R1/8	8.0	14.0	3	11.3	50
17050612	CRTST 0602	6X4	52.5	30	11.5	10.0	17.0	4.0	6.2	R1/4	11.0	14.0	3	11.9	50
17050811	CRTST 0801	8X6	53.5	33	8.5	11.0	19.0	6.0	8.2	R1/8	11.0	17.0	5	15.9	40
17050812	CRTST 0802	8X6	56.5	33	11.5	11.0	19.0	6.0	8.2	R1/4	12.0	17.0	5	16.5	40
17051012	CRTST 1002	10X8	61.5	37	11.5	12.0	22.0	8.0	10.2	R1/4	12.0	19.0	7	21.2	25
17051013	CRTST 1003	10X8	62.5	37	12.5	12.0	22.0	8.0	10.2	R3/8	14.0	19.0	7	22.4	25
17051213	CRTST 1203	12X10	70.5	43	12.5	14.0	27.0	10.0	12.2	R3/8	14.0	22.0	9	33.7	25
17051214	CRTST 1204	12X10	73.5	43	15.5	14.0	27.0	10.0	12.2	R1/2	17.0	22.0	9	35.2	25

CRTUC

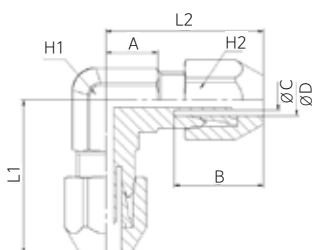
(Union Straight)



CODE	MODEL	TUBE SIZE	L	A	B	ØC	ØD	H1	H2	Orifice (Ømm)	W.G(g)	Q'ty/inbox
17060400	CRTUC 04	4X2	39	5.0	15.5	-	4.2	12.0	12.0	2	5.2	50
17060600	CRTUC 06	6X4	46	6.0	17.0	4.0	6.2	14.0	14.0	3	8.2	50
17060800	CRTUC 08	8X6	50	6.0	19.0	6.0	8.2	17.0	17.0	5	12.7	40
17061000	CRTUC 10	10X8	58	8.0	22.0	8.0	10.2	19.0	19.0	7	17.3	25
17061200	CRTUC 12	12X10	67	9.0	27.0	10.0	12.2	22.0	22.0	9	26.1	25

CRTUL

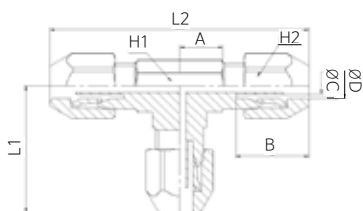
(Union Elbow)



CODE	MODEL	TUBE SIZE	L1	L2	A	B	ØC	ØD	H1	H2	Orifice (Ømm)	W.G(g)	Q'ty/inbox
17070400	CRTUL 04	4X2	24.5	24.5	7.5	8.0	-	4.2	8.0	12.0	2	5.5	50
17070600	CRTUL 06	6X4	30	30	10.0	17.0	4.0	6.2	11.0	14.0	3	9.8	50
17070800	CRTUL 08	8X6	33	33	11.0	19.0	6.0	8.2	12.0	17.0	3	14.1	40
17071000	CRTUL 10	10X8	37	37	12.0	22.0	8.0	10.2	14.0	19.0	5	19	25
17071200	CRTUL 12	12X10	42	42	13.0	27.0	10.0	12.2	17.0	22.0	5	28.7	25

CRTUT

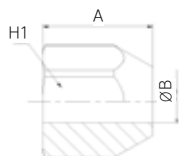
(Union Tee)



CODE	MODEL	TUBE SIZE	L1	L2	A	B	ØC	ØD	H1	H2	Orifice (Ømm)	W.G(g)	Q'ty/inbox
17080400	CRTUT 04	4X2	24.5	49	7.5	15.5	-	4.2	8.0	12.0	2	8	50
17080600	CRTUT 06	6X4	30	60	10.0	17.0	4.0	6.2	11.0	14.0	3	14	40
17080800	CRTUT 08	8X6	33	66	11.0	19.0	6.0	8.2	12.0	17.0	5	20.5	40
17081000	CRTUT 10	10X8	37	74	12.0	22.0	8.0	10.2	14.0	19.0	7	27.3	25
17081200	CRTUT 12	12X10	42	84	13.0	27.0	10.0	12.2	17.0	22.0	9	41.1	20

CR-NUT

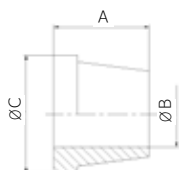
(Nut)



CODE	MODEL	TUBE SIZE	A	ØB	H	W.G(g)	Q'ty/inbox
17090400	CR-NUT CT04	4X2	13.5	4.2	12.0	1.5	100
17090600	CR-NUT CT06	6X4	15	6.2	14.0	2.1	100
17090800	CR-NUT CT08	8X6	17	8.2	17.0	3	50
17091000	CR-NUT CT10	10X8	19	10.2	19.0	4	50
17091200	CR-NUT CT12	12X10	22	12.2	22.0	6.8	50

CR-SLEEVE

(Sleeve)



CODE	MODEL	TUBE SIZE	A	ØB	ØC	W.G(g)	Q'ty/inbox
17100400	CR-SLEEVE CT04	4X2	6	4.2	7.5	0.2	100
17100600	CR-SLEEVE CT06	6X4	7	6.2	9.5	0.3	100
17100800	CR-SLEEVE CT08	8X6	8	8.2	12.0	0.5	100
17101000	CR-SLEEVE CT10	10X8	9	10.2	14.0	0.6	100
17101200	CR-SLEEVE CT12	12X10	10	12.2	15.8	0.8	100

Clean Two Touch Fittings

Application

- Clean Air, Pure Water, Connector with nut-fitted used in clean Air, Pure Water, chemical piping.
- Be able to use with variety depend on user's environment.

Feature

- Excellent in corrosion resistance, chemical resistance.
- Hava semipermanent life expectancy for the products made of plastic.
- Products are packed and assembled after being washed in clean room.
- Excellent in no-rash and non-polliting for the products used with material made of PP.
- Have excellent effect in serious a vibrating part and moving because tube joints forced to be tightened.

Specification

Fluid	Water, Air, Oil, Liquid Chemical	
Working Pressure Range	0~10kgf/cm ² (0~980kPa)	0~145psi
Temperature Range	0~80°C	32°F~176°F
Applicable Tube Material	Polyurethane, Nylon, Teflon TUBE	

Produce Code System

CTC	08	02
①	②	③

① Type

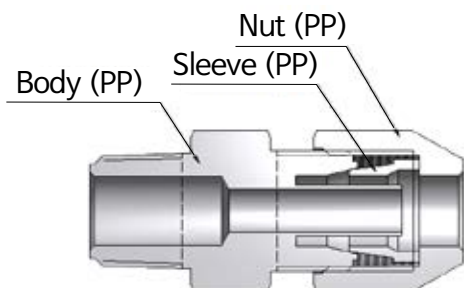
② Tube Dia (∅D)

Code	04	06	08	10	12
Dia	∅4	∅6	∅8	∅10	∅12

③ Thread Size

	Taper Pipe Thread			
Code	01	02	03	04
Size	R1/8	R1/4	R3/8	R1/2

Structure Diagram



Clean Two Touch Fittings _ Product Feature List

CTC

(Male Straight)



CTCT

(Through Male Straight)



CTL

(Male Elbow)



CTT

(Male Branch Tee)



CTST

(Male Run Tee)



CTUC

(Union Straight)



CTUL

(Union Elbow)



CTUT

(Union Tee)



C-NUT

(Nut)



C-SLEEVE

(Sleeve)



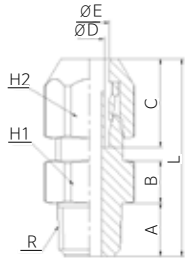
Caution

1. Avoid randomly product change.
2. Never over pushing to assemble product, it may cause damage.
3. Please check leakage before built.

Clean Two Touch Fittings

CTC

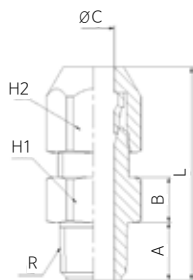
(Male Straight)



CODE	MODEL	TUBE SIZE	L	A	B	C	ØD	ØE	R	H1	H2	Orifice (Ømm)	W.G(g)	Q'ty/inbox
17200411	CTC 0401	4X2	30.5	8.5	5.0	15.5	-	4.2	R1/8	12.0	12.0	2	1.9	50
17200611	CTC 0601	6X4	34.5	8.5	6.0	17.0	4.0	6.2	R1/8	14.0	14.0	3	4.3	50
17200612	CTC 0602	6X4	37.5	11.5	6.0	17.0	4.0	6.2	R1/4	14.0	14.0	3	4.7	50
17200811	CTC 0801	8X6	39.5	8.5	9.0	19.0	6.0	8.2	R1/8	17.0	17.0	5	4.8	50
17200812	CTC 0802	8X6	42.5	11.5	9.0	19.0	6.0	8.2	R1/4	17.0	17.0	5	5	40
17201202	CTC 1002	10X8	45.5	11.5	9.0	22.0	8.0	10.2	R1/4	19.0	19.0	7	6.5	40
17201203	CTC 1003	10X8	46.5	12.5	9.0	22.0	8.0	10.2	R3/8	19.0	19.0	7	7	40
17201213	CTC 1203	12X10	50.5	12.5	9.0	27.0	10.0	12.2	R3/8	22.0	22.0	9	9.5	25
17201214	CTC 1204	12X10	53.5	15.5	9.0	27.0	10.0	12.2	R1/2	22.0	22.0	9	10.3	25

CTCT

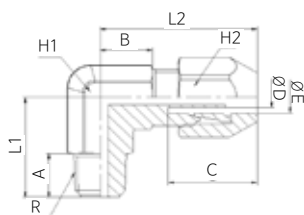
(Through Male Straight)



CODE	MODEL	TUBE SIZE	L	A	B	ØC	R	H1	H2	Orifice (Ømm)	W.G(g)	Q'ty/inbox
17210411	CTCT 0401	4	30.5	8.5	5.0	4.2	R1/8	12.0	12.0	4.2	1.9	50
17210611	CTCT 0601	6	34.5	8.5	6.0	6.2	R1/8	14.0	14.0	6.2	2.6	50
17210612	CTCT 0602	6	37.5	11.5	6.0	6.2	R1/4	14.0	14.0	6.2	3.1	50
17210812	CTCT 0802	8	42.5	11.5	9.0	8.2	R1/4	17.0	17.0	8.2	4.6	40
17211013	CTCT 1003	10	46.5	12.5	9.0	10.2	R3/8	19.0	19.0	10.2	6.3	25
17211214	CTCT 1204	12	53.5	15.5	9.0	12.2	R1/2	22.0	22.0	12.2	9.8	25

CTL

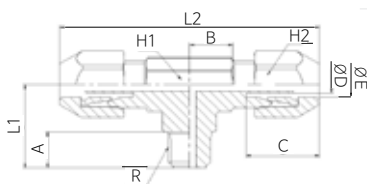
(Male Elbow)



															(mm)	
CODE	MODEL	TUBE SIZE	L1	L2	A	B	C	ØD	ØE	R	H1	H2	Orifice (Ømm)	W.G(g)	Q'ty/inbox	
17220411	CTL 0401	4X2	17.0	24.5	8.5	7.5	15.5	-	4.2	R1/8	8.0	12.0	2	2.1	50	
17220611	CTL 0601	6X4	19.5	30	8.5	10.0	17.0	4.0	6.2	R1/8	11.0	14.0	3	3.8	50	
17220612	CTL 0602	6X4	22.5	30	11.5	10.0	17.0	4.0	6.2	R1/4	11.0	14.0	3	4.1	50	
17220811	CTL 0801	8X6	20.5	33	8.5	11.0	19.0	6.0	8.2	R1/8	12.0	17.0	5	5.1	40	
17220812	CTL 0802	8X6	23.5	33	11.5	11.0	19.0	6.0	8.2	R1/4	12.0	17.0	5	5.4	40	
17221012	CTL 1002	10X8	24.5	37	11.5	12.0	22.0	8.0	10.2	R1/4	14.0	19.0	7	6.9	40	
17221013	CTL 1003	10X8	25.5	37	12.5	12.0	22.0	8.0	10.2	R3/8	14.0	19.0	7	7.5	40	
17221213	CTL 1203	12X10	27.5	43	12.5	14.0	27.0	10.0	12.2	R3/8	17.0	22.0	9	11.1	25	
17221214	CTL 1204	12X10	30.5	43	15.5	14.0	27.0	10.0	12.2	R1/2	17.0	22.0	9	11.8	25	

CTT

(Male Branch Tee)

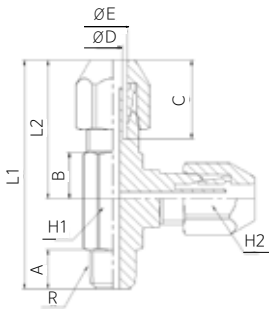


															(mm)	
CODE	MODEL	TUBE SIZE	L1	L2	A	B	C	ØD	ØE	R	H1	H2	Orifice (Ømm)	W.G(g)	Q'ty/inbox	
17230411	CTT 0401	4X2	17.0	49	8.5	7.5	15.5	-	4.2	R1/8	8.0	12.0	2	3.4	50	
17230611	CTT 0601	6X4	19.5	60	8.5	10.0	17.0	4.0	6.2	R1/8	11.0	14.0	3	5.9	50	
17230612	CTT 0602	6X4	22.5	60	11.5	10.0	17.0	4.0	6.2	R1/4	11.0	14.0	3	6.3	50	
17230811	CTT 0801	8X6	20.5	66	8.5	11.0	19.0	6.0	8.2	R1/8	12.0	17.0	5	8.2	40	
17230812	CTT 0802	8X6	23.5	66	11.5	11.0	19.0	6.0	8.2	R1/4	12.0	17.0	5	8.5	40	
17231012	CTT 1002	10X8	24.5	74	11.5	12.0	22.0	8.0	10.2	R1/4	14.0	19.0	7	11.2	25	
17231013	CTT 1003	10X8	25.5	74	12.5	12.0	22.0	8.0	10.2	R3/8	14.0	19.0	7	11.7	25	
17231213	CTT 1203	12X10	27.5	86	12.5	14.0	27.0	10.0	12.2	R3/8	17.0	22.0	9	17.5	25	
17231214	CTT 1204	12X10	30.5	86	15.5	14.0	27.0	10.0	12.2	R1/2	17.0	22.0	9	18.3	25	

Clean Two Touch Fittings

CTST

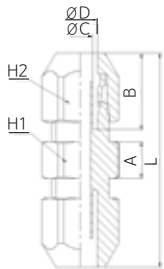
(Male Run Tee)



																(mm)	
CODE	MODEL	TUBE SIZE	L1	L2	A	B	C	ØD	ØE	R	H1	H2	Orifice (Ømm)	W.G(g)	Q'ty/inbox		
17240411	CTST 0401	4X2	41.5	24.5	8.5	7.5	15.5	-	4.2	R1/8	8.0	12.0	2	3.4	50		
17240611	CTST 0601	6X4	49.5	30	8.5	10.0	17.0	4.0	6.2	R1/8	11.0	14.0	3	5.9	50		
17240612	CTST 0602	6X4	52.5	30	11.5	10.0	17.0	4.0	6.2	R1/4	11.0	14.0	3	6.2	50		
17240811	CTST 0801	8X6	53.5	33	8.5	11.0	19.0	6.0	8.2	R1/8	12.0	17.0	5	8.2	40		
17240812	CTST 0802	8X6	56.5	33	11.5	11.0	19.0	6.0	8.2	R1/4	12.0	17.0	5	8.5	40		
17241012	CTST 1002	10X8	61.5	37	11.5	12.0	22.0	8.0	10.2	R1/4	14.0	19.0	7	11.1	25		
17241013	CTST 1003	10X8	62.5	37	12.5	12.0	22.0	8.0	10.2	R3/8	14.0	19.0	7	11.7	25		
17241213	CTST 1203	12X10	70.5	43	12.5	14.0	27.0	10.0	12.2	R3/8	17.0	22.0	9	17.5	25		
17241214	CTST 1204	12X10	73.5	43	15.5	14.0	27.0	10.0	12.2	R1/2	17.0	22.0	9	18.3	25		

CTUC

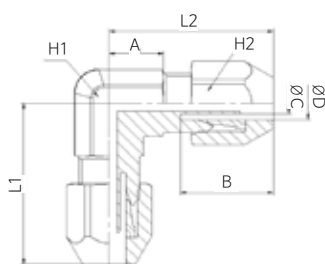
(Union Straight)



																(mm)	
CODE	MODEL	TUBE SIZE	L	A	B	ØC	ØD	H1	H2	Orifice (Ømm)	W.G(g)	Q'ty/inbox					
17250400	CTUC 04	4X2	39	5.0	15.5	-	4.2	12.0	12.0	2	2.7	50					
17250600	CTUC 06	6X4	46	6.0	17.0	4.0	6.2	14.0	14.0	3	4.3	50					
17250800	CTUC 08	8X6	50	6.0	19.0	6.0	8.2	17.0	17.0	5	6.6	40					
17251000	CTUC 10	10X8	58	8.0	22.0	8.0	10.2	19.0	19.0	7	8.9	25					
17251200	CTUC 12	12X10	67	9.0	27.0	10.0	12.2	22.0	22.0	9	13.5	25					

CTUL

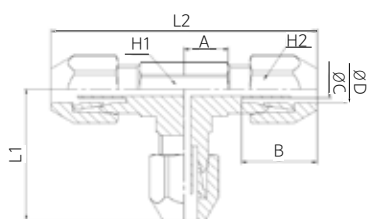
(Union Elbow)



													(mm)	
CODE	MODEL	TUBE SIZE	L1	L2	A	B	ØC	ØD	H1	H2	Orifice (Ømm)	W.G(g)	Q'ty/inbox	
17260400	CTUL 04	4X2	24.5	24.5	7.5	8.0	-	4.2	8.0	12.0	2	2.9	50	
17260600	CTUL 06	6X4	30	30	10.0	17.0	4.0	6.2	11.0	14.0	3	5.1	50	
17260800	CTUL 08	8X6	33	33	11.0	19.0	6.0	8.2	12.0	17.0	5	7.3	40	
17261000	CTUL 10	10X8	37	37	12.0	22.0	8.0	10.2	14.0	19.0	7	9.8	25	
17261200	CTUL 12	12X10	42	42	13.0	27.0	10.0	12.2	17.0	22.0	9	14.9	25	

CTUT

(Union Tee)

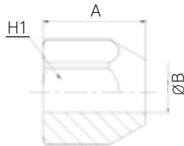


													(mm)	
CODE	MODEL	TUBE SIZE	L1	L2	A	B	ØC	ØD	H1	H2	Orifice (Ømm)	W.G(g)	Q'ty/inbox	
17270400	CTUT 04	4X2	24.5	49	7.5	15.5	-	4.2	8.0	12.0	2	4.2	50	
17270600	CTUT 06	6X4	30	60	10.0	17.0	4.0	6.2	11.0	14.0	3	7.3	40	
17270800	CTUT 08	8X6	33	66	11.0	19.0	6.0	8.2	12.0	17.0	5	10.6	40	
17271000	CTUT 10	10X8	37	74	12.0	22.0	8.0	10.2	14.0	19.0	7	14	25	
17271200	CTUT 12	12X10	42	84	13.0	27.0	10.0	12.2	17.0	22.0	9	21.2	20	

Clean Two Touch Fittings

C-NUT

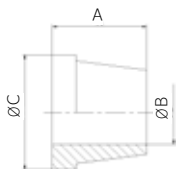
(Nut)



								(mm)
CODE	MODEL	TUBE SIZE	A	ØB	H	W.G(g)	Q'ty/inbox	
17280400	C-NUT CT04	4X2	13.5	4.2	12.0	0.8	100	
17280600	C-NUT CT06	6X4	15	6.2	14.0	1.1	100	
17280800	C-NUT CT08	8X6	17	8.2	17.0	1.6	50	
17281000	C-NUT CT10	10X8	19	10.2	19.0	2.1	50	
17281200	C-NUT CT12	12X10	22	12.2	22.0	3.5	50	

C-SLEEVE

(Sleeve)



								(mm)
CODE	MODEL	TUBE SIZE	A	ØB	ØC	W.G(g)	Q'ty/inbox	
17290400	C-SLEEVE CT04	4X2	6	4.2	7.5	0.1	100	
17290600	C-SLEEVE CT06	6X4	7	6.2	9.5	0.2	100	
17290800	C-SLEEVE CT08	8X6	8	8.2	12.0	0.2	100	
17291000	C-SLEEVE CT10	10X8	9	10.2	14.0	0.3	100	
17291200	C-SLEEVE CT12	12X10	10	12.2	15.8	0.4	100	



이주 상아뉴매릭
SANG-A PNEUMATIC CO., LTD.

#36, SECHEON-RO 3-GIL, DASA-EUP,
DALSEONG-GUN, DAEGU, KOREA
TEL : (053)583-5200, FAX : (053)583-5208
<http://www.sanga2000.com>
E-mail : sanga@sanga2000.com