

Q215

# product catalogue





## Haelok – the company

Haelok AG, the inventor of one of the world strongest mechanical pipe connection, is a Zurich, Switzerland based privately held company, founded in 2005.

The company is ISO 9001 certified and has global product approvals for different uses.

Haelok fittings are considered the only mechanical alternative to welding. Haelok delivers the best products for even the most demanding pipe-fitting applications.

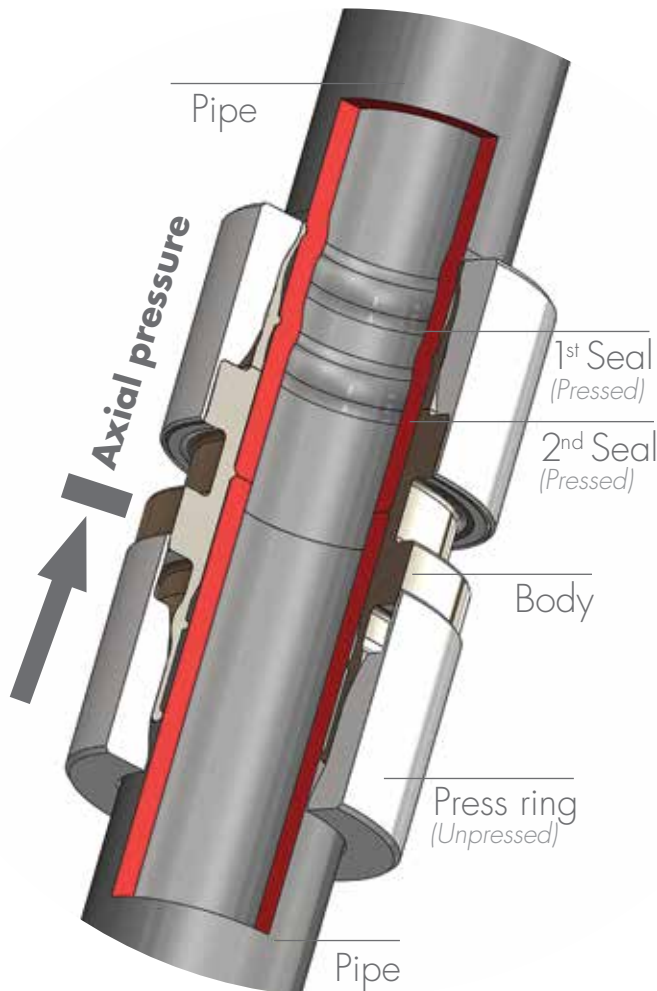
Our international client base and large distribution network proves our ability to provide first class service for global companies and customers. In short for your pipe connecting challenges – we are your "perfect fit".



## table of contents product catalogue 2Q15

### Company Profile

The Haelok System „the perfect fit“	4
Certification & Approvals	7
Application and Burst Pressure Tests	8
Pipe Specifications	9
Fitting Catalogue	10
Press Tools	24
Installation Guide	30



The HAELOK System, invented and perfected in Switzerland, provides **pure metal to metal sealing** onto the tubing utilizing its uniquely formed wedge design.

This unique pipe-connection system, **without gaskets**, ensures highly hermetic sealing for pipe dimensions from 6 mm up to 168.3 mm (6").

Reliability and quality is machined into HAELOK System's unique design and it's paired with an unparalleled ease of installation.

For many different applications, various pipe diameters, materials and fluid contents, HAELOK is "the perfect" fit and can supply the appropriate fitting for every job.

**Average time to install a fitting in constant quality: less than one minute, and no need for certified, specialized labor.**

**Imagine the benefits.**

Tested and approved up to 1140bar, 16'500 psi.  
100% no welded parts.

### Installation Benefits

- ➔ Works in small, difficult to access spaces
- ➔ **No inspection** by X-ray or other methods needed
- ➔ Installation is secure and can be done in any circumstance or weather condition
- ➔ Significantly **faster than welding**
- ➔ Supplied pre-assembled, **very simple installation**
- ➔ No need to completely clean or dry the pipe
- ➔ **Every connection is of the same highest quality**

### Real Cost Benefits

- ➔ Faster installation, therefore a real cost advantage
- ➔ **No need for certified, experienced labor**
- ➔ Reducing the overall costs of your installation
- ➔ Works equally well for both welded as well as seamless pipes
- ➔ **No high-precision pipes needed**
- ➔ No expensive test equipment needed

### HSEQ

- ➔ **No hot works**; fire or explosion risks are eliminated
- ➔ No sparks, **no safety issues**
- ➔ Highest safety standards are used, e.g. installations in clean rooms
- ➔ **Purely metallic seal without any further material**
- ➔ Pressed permanently sealed
- ➔ Supplied pre-assembled, **no assembly errors**



Approved Swiss Precision Technology.



### Haelok Certification & International Certification Standards

Haelok is in full conformity to ASME (B31.1 Power Piping / B 31.3 Process Piping) and fulfills all requirements of IACS (International Association for Classification of Ships). IACS is regarded as the most demanding industry certification. Haelok is constantly adding additional certifications according to the requirements of the various industries.

Test requirements include Tightness, Pull-out, Burst pressure, Vibration and Pressure Pulsation, Vacuum and Fire Resistance.

## Applications and Burst Pressure Test

### Technical Specifications

This unique pipe-connection system, without gaskets, ensures highly hermetic sealing for pipe dimensions from 6 mm up to 168.3 mm (6").

Temperature range is from -55°C up to +440°C, working pressure up to 1137bar / 16'500 PSI.

Usable for seamless and welded pipes with the dimensions to **EN ISO 1127, EN 10220 D3/T3, ASTM A213 and ASTM A269.**

Pipe diameters from 6mm to 168.5mm. Our fittings are available in Stainless Steel, Carbon Steel and other materials on customer request.

### Dimensioning of the wall thickness:

The dimensioning of the pipes is done to DIN 2413 or to ANSI B 31.3 for a given pressure for the particular application. For further specifications consult the pipe manufacturers.

### Inch outside pipe diameter

DN	Size	OD	s (wall thickness)	PN <sup>1)</sup> (Nominal Pressure)	PN <sup>2)</sup> (test to IACS)	Burst Pressure test <sup>3)</sup>
6	1/8"	10,2	1,8	600bar	300bar	1137bar
8	1/4"	13,5	1,8	600bar	300bar	1137bar
10	3/8"	17,2	1,8	400bar	300bar	1137bar
15	1/2"	21,3	2,0	400bar	200bar	800bar
20	3/4"	26,9	2,3	400bar	200bar	800bar
25	1"	33,7	2,6	400bar	200bar	800bar
32	1 1/4"	42,4	2,6	300bar	150bar	600bar
40	1 1/2"	48,3	2,6	300bar	150bar	600bar
50	2"	60,3	2,6	300bar	150bar	600bar

### Metric outside pipe diameter

Size	OD	s (wall thickness)	PN <sup>1)</sup> (Nominal Pressure)	PN <sup>2)</sup> (test to IACS)	Burst Pressure test <sup>3)</sup>
6	6	1,5	600bar	300bar	1137bar
8	8	1,5	600bar	300bar	1137bar
10	10	1,5	600bar	300bar	1137bar
12	12	1,5	600bar	300bar	1137bar
16	16	1,5	400bar	200bar	800bar
18	18	1,5	400bar	200bar	800bar
20	20	2	400bar	200bar	800bar
22	22	2	400bar	200bar	800bar
25	25	2,5	400bar	200bar	800bar
28	28	2,5	400bar	200bar	800bar
30	30	3	400bar	200bar	800bar
35	35	3	300bar	150bar	600bar
38	38	3	300bar	150bar	600bar
42	42	3	300bar	150bar	600bar
50	50	3	300bar	150bar	600bar
54	54	3	300bar	150bar	600bar

<sup>1)</sup> Pressure for doubled safety factor

<sup>2)</sup> Nominal pressure PN for shipbuilding

<sup>3)</sup> Burst pressure proofed at 4-times nominal pressure over 5min



## Pipe specifications

### Inch outside pipe diameter

DN	Size	OD	OD <sub>max</sub> <sup>4)</sup>	s <sub>min</sub>	s <sub>max</sub>	OD <sub>1</sub>	OD <sub>2</sub>
6	1/8"	10,2	10,4	1	2,3	10,2	10,29
8	1/4"	13,5	13,7	1,6	2,3	13,5	13,72
10	3/8"	17,2	17,5	1,6	3,2	17,2	17,15
15	1/2"	21,3	21,6	1,6	2,77	21,3	21,26
20	3/4"	26,9	27,2	2,11	3,91	26,9	26,67
25	1"	33,7	34,0	2,6	4,55	33,7	33,41
32	1 1/4"	42,4	42,7	2,6	5,08	42,4	42,16
40	1 1/2"	48,3	48,9	2,6	5,08	48,3	48,26
50	2"	60,3	60,3	2,6	5,54	60,3	60,33

### Metric outside pipe diameter

Size	OD	OD <sub>max</sub>	s <sub>min</sub>	s <sub>max</sub>
6	6	6,1	1	1,5
8	8	8,1	1	1,5
10	10	10,1	1	2
12	12	12,2	1,5	2
16	16	16,2	1,5	3
18	18	18,2	1,5	3
20	20	20,2	1,5	3
22	22	22,2	1,5	3
25	25	25,2	1,5	3
28	28	28,3	1,5	3
30	30	30,3	1,5	3
35	35	35,3	2	3
38	38	38,3	2	4
42	42	42,7	2	4
50	50	50,5	2	5
54	54	54,5	2	5

<sup>4)</sup>OD<sub>min</sub> according to standard

### Admissible pipe tolerances:

#### EN ISO 1127 or EN 10220 (OD<sub>1</sub>)

Outside diameter D3:

±0,75%, or min. ±0,3mm

Wall thickness T3:

±10%, or min. ±0,2mm

Hardness:

≤ 90 HRB

#### ASTM A213/A269 (OD<sub>2</sub>)

Outside diameter D3:

13,72 to 38,1mm: ±0,13mm

38,1 to 88,9mm: ±0,25mm

Wall thickness T3:

±10%

Hardness:

≤ 90 HRB

Pipes shall be of good quality, fully annealed construction with **maximum Rockwell B scale hardness of 90.**

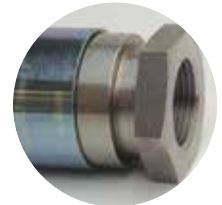
STRAIGHT FITTING / STRAIGHT REPAIR 12



REDUCER 14



STRAIGHT THREAD INTERNAL / EXTERNAL 16



END CAP 18



ELBOW 90° 19



BENDED PIPE 90° 20



UNION TEE 21



DISTRIBUTOR 2 OUTLETS / 4 OUTLETS 22





# Fitting product catalogue

## for carbon steel pipes

according to EN 10216-1 to -4 and EN 10305-1 and -7

## for stainless steel pipes

according to EN 10216-5 and EN 10217-1 and -7

material **CC:**

Pipe fitting materials:

Body: Carbon steel 1.0570 (AISI 1024)\* galvanized, Press ring: Carbon steel 1.0570 (AISI 1024)\* galvanized

material **XC:**

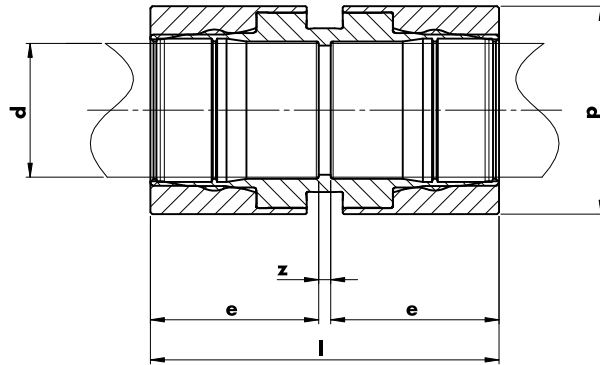
Pipe fitting materials:

Body: Stainless steel 1.4404 (AISI 316L)\*, Press ring: Carbon steel 1.0570 (AISI 1024)\* galvanized

material **XX:**

Pipe fitting materials:

Body: Stainless steel 1.4404 (AISI 316L)\*, Press ring: Stainless steel 1.4404 (AISI 316L)\*



## Straight Fitting (Metric)

Metric outside diameter

d	Code No.	p	l	e	z	Weight (g)
6	HLK-10SF-06-__	18	37	17	3	54
8	HLK-10SF-08-__	18	37	17	3	60
10	HLK-10SF-10-__	22	37	17	3	65
12	HLK-10SF-12-__	22	37	17	3	70
16	HLK-10SF-16-__	27	52	25	2	133
18	HLK-10SF-18-__	29	52	25	2	150
20	HLK-10SF-20-__	32	52	25	2	180
22	HLK-10SF-22-__	34	52	25	2	190
25	HLK-10SF-25-__	37	52	25	2	210
28	HLK-10SF-28-__	40	52	25	2	229
30	HLK-10SF-30-__	47	87	42	3	641
35	HLK-10SF-35-__	55	87	42	3	818
38	HLK-10SF-38-__	55	87	42	3	776
54	HLK-10SF-54-__	74	87	42	3	1206

## Straight Fitting (Inch)

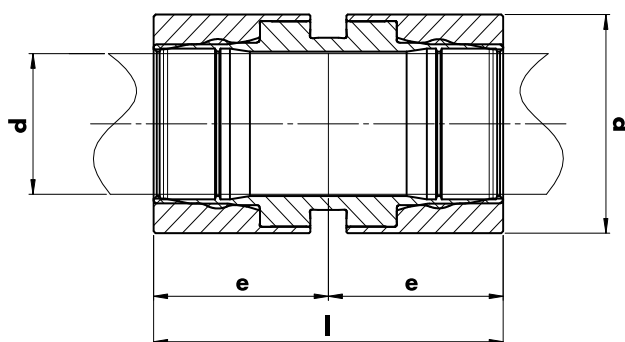
Inch outside diameter

d	Code Nr.	p	l	e	z	Weight (g)
1/4"	HLK-10SF-13-__	22	37	17	3	55
3/8"	HLK-10SF-17-__	29	52	25	2	160
1/2"	HLK-10SF-21-__	34	52	25	2	187
3/4"	HLK-10SF-26-__	39	52	25	2	223
1"	HLK-10SF-33-__	52	87	42	3	770
1 1/4"	HLK-10SF-42-__	61	87	42	3	941
1 1/2"	HLK-10SF-48-__	68	87	42	3	1108
2"	HLK-10SF-60-__	82	87	42	3	1445
2 1/2"	HLK-10SF-76-__	98	155	75	5	2800
3"	HLK-10SF-88-__	116	155	75	5	4800
4"	HLK-10SF-114-__	141	155	75	5	5800

All dimensions in millimeters, except specially marked  
Errors and technical changes reserved

Material and Order Codes

- CC:** Body & Press-Ring: Steel Galvanized: Example: HLK-10SF-12-CC
- XC:** Body: Stainless Steel; Press-Ring: Steel galvanized: Example: HLK-10SF-12-XC
- XX:** Body & Press-Ring: Stainless Steel: Example: HLK-10SF-12-XX



## Straight Repair (Metric)

Metric outside diameter

d	Code No.	p	l	e	Weight (g)
6	HLK-10SR-06-__	18	37	18.5	54
8	HLK-10SR-08-__	18	37	18.5	60
10	HLK-10SR-10-__	22	37	18.5	65
12	HLK-10SR-12-__	22	37	18.5	70
16	HLK-10SR-16-__	27	52	26	133
18	HLK-10SR-18-__	29	52	26	150
20	HLK-10SR-20-__	32	52	26	180
22	HLK-10SR-22-__	34	52	26	190
25	HLK-10SR-25-__	37	52	26	210
28	HLK-10SR-28-__	40	52	26	229
30	HLK-10SR-30-__	47	87	43.5	641
35	HLK-10SR-35-__	55	87	43.5	818
38	HLK-10SR-38-__	55	87	43.5	776
54	HLK-10SR-54-__	74	87	43.5	1206

## Straight Repair (Inch)

Inch outside diameter

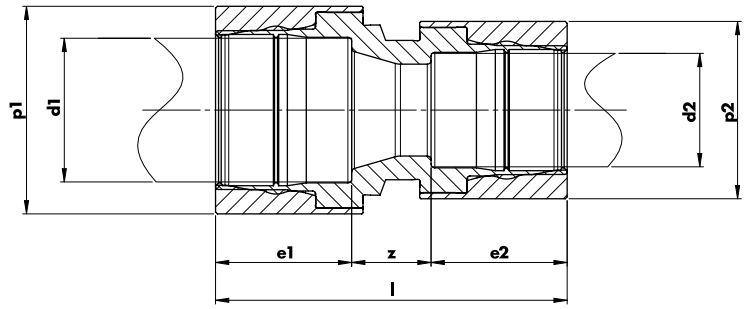
d	Code Nr.	p	l	e	Weight (g)
1/4"	HLK-10SR-13-__	22	37	18.5	55
3/8"	HLK-10SR-17-__	29	52	26	160
1/2"	HLK-10SR-21-__	34	52	26	187
3/4"	HLK-10SR-26-__	39	52	26	223
1"	HLK-10SR-33-__	52	87	43,5	770
1 1/4"	HLK-10SR-42-__	61	87	43,5	941
1 1/2"	HLK-10SR-48-__	68	87	43,5	1108
2"	HLK-10SR-60-__	82	87	43,5	1445
2 1/2"	HLK-10SR-76-__	98	155	77,5	2800
3"	HLK-10SR-88-__	116	155	77,5	4800
4"	HLK-10SR-114-__	141	155	77,5	5800

All dimensions in millimeters, except specially marked  
 Errors and technical changes reserved

Material and Order Codes

**CC:** Body & Press-Ring: Steel Galvanized: Example: HLK-10SR-12-CC  
**XC:** Body: Stainless Steel; Press-Ring: Steel galvanized: Example: HLK-10SR-12-XC  
**XX:** Body & Press-Ring: Stainless Steel: Example: HLK-10SR-12-XX

Other dimensions or materials on request



## Reducer (Metric)

Metric outside diameter

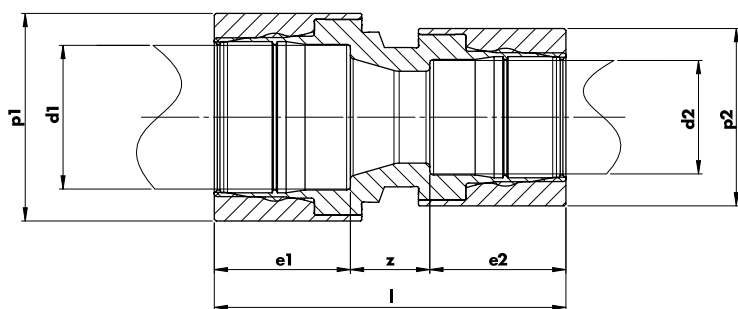
d1	d2	Code No.	p <sub>1</sub>	e <sub>1</sub>	p <sub>2</sub>	e <sub>2</sub>	l	z	Weight (g)
12	10	HLK-10RE-12-10-__	22	17	22	17	37	3	85
16	12	HLK-10RE-16-12-__	27	25	22	17	45	3	133
18	12	HLK-10RE-18-12-__	29	25	22	17	45	3	180
20	16	HLK-10RE-20-16-__	32	25	27	25	58	8	180
22	18	HLK-10RE-22-18-__	34	25	29	25	58	8	190
25	20	HLK-10RE-25-20-__	37	25	32	25	58	8	210
28	22	HLK-10RE-28-22-__	40	25	34	25	58	8	229
30	25	HLK-10RE-30-25-__	47	42	37	25	75	8	641
35	28	HLK-10RE-35-28-__	55	42	40	25	75	8	760
35	22	HLK-10RE-35-22-__	55	42	34	25	75	8	760
38	30	HLK-10RE-38-30-__	55	42	47	42	100	16	776
38	28	HLK-10RE-38-28-__	55	42	40	25	75	8	776
54	42	HLK-10RE-54-42-__	74	42	61	42	100	16	1206
54	35	HLK-10RE-54-35-__	74	42	54	42	100	16	1206
54	28	HLK-10RE-54-28-__	74	42	40	25	75	8	1206
54	22	HLK-10RE-54-22-__	74	42	34	25	75	8	1206

All dimensions in millimeters, except specially marked  
Errors and technical changes reserved

### Material and Order Codes

- CC:** Body & Press-Ring: Steel Galvanized: Example: HLK-10RE-18-12-CC
- XC:** Body: Stainless Steel; Press-Ring: Steel galvanized: Example: HLK-10RE-18-12-XC
- XX:** Body & Press-Ring: Stainless Steel: Example: HLK-10RE-18-12-XX

Other dimensions or materials on request



## Reducer (Inch)

Inch outside diameter

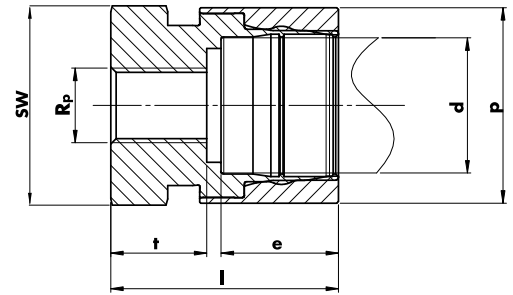
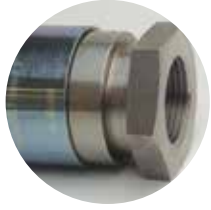
d1	d2	Code No.	p <sub>1</sub>	e <sub>1</sub>	p <sub>2</sub>	e <sub>d</sub>	l	z	Weight (g)
3/8"	1/4"	HLK-10RE-17-13-__	29	25	22	17	45	3	140
1/2"	3/8"	HLK-10RE-21-17-__	34	25	29	25	55	5	180
1/2"	1/4"	HLK-10RE-21-13-__	34	25	22	17	45	3	180
1"	3/4"	HLK-10RE-33-26-__	52	42	39	25	75	8	770
1"	1/2"	HLK-10RE-33-21-__	52	42	34	25	75	8	770
1 1/4"	1"	HLK-10RE-42-33-__	61	42	52	42	100	16	941
1 1/4"	3/4"	HLK-10RE-42-26-__	61	42	39	25	75	8	941
1 1/4"	1/2"	HLK-10RE-42-21-__	61	42	34	25	75	8	941
1 1/2"	1 1/4"	HLK-10RE-48-42-__	68	42	61	42	100	16	1108
1 1/2"	1"	HLK-10RE-48-33-__	68	42	52	42	100	16	1108
1 1/2"	3/4"	HLK-10RE-48-26-__	68	42	39	25	75	8	1108
2"	1 1/2"	HLK-10RE-60-48-__	82	42	68	42	100	16	1444
2"	1 1/4"	HLK-10RE-60-42-__	82	42	62	42	100	16	1444
2"	1"	HLK-10RE-60-33-__	82	42	52	42	100	16	1444

d1	d2	Code No.	p <sub>1</sub>	e <sub>1</sub>	p <sub>2</sub>	e <sub>d</sub>	l	z	Weight (g)
1"	28	HLK-10RE-33-28-__	52	42	40	25	75	8	770
1"	22	HLK-10RE-33-22-__	52	42	34	25	75	8	770
1"	18	HLK-10RE-33-18-__	52	42	29	25	75	8	770
1 1/4"	22	HLK-10RE-42-22-__	61	42	34	25	75	8	941
1 1/2"	30	HLK-10RE-48-30-__	68	42	47	42	100	16	1108
1 1/2"	28	HLK-10RE-48-28-__	68	42	40	25	75	8	1108

All dimensions in millimeters, except specially marked  
Errors and technical changes reserved

### Material and Order Codes

**CC:** Body & Press-Ring: Steel Galvanized: Example: HLK-10RE-17-13-CC  
**XC:** Body: Stainless Steel; Press-Ring: Steel galvanized: Example: HLK-10RE-17-13-XC  
**XX:** Body & Press-Ring: Stainless Steel: Example: HLK-10RE-17-13-XX



## Straight Thread Internal (Metric)

Metric outside diameter

d	R <sub>p</sub> <sup>1)</sup>	Code No.	p	l	e	t	SW	Weight (g)
12	1/4"	HLK-10TI-12-R14- __	22	33	17	13	22	80
16	3/8"	HLK-10TI-16-R38- __	27	42	25	14	27	120
18	3/8"	HLK-10TI-18-R38- __	29	42	25	14	27	120
20	1/2"	HLK-10TI-20-R12- __	32	46	25	18	32	150
22	1/2"	HLK-10TI-22-R12- __	34	46	25	18	32	160
25	3/4"	HLK-10TI-25-R34- __	37	48	25	20	41	170
28	3/4"	HLK-10TI-28-R34- __	40	48	25	20	41	200
30	3/4"	HLK-10TI-30-R34- __	47	65	42	20	41	400
35	1"	HLK-10TI-35-R1- __	55	67	42	22	50	600
38	1"	HLK-10TI-38-R1- __	55	67	42	22	50	600
54	2"	HLK-10TI-54-R2- __	74	70	42	22	72	1070

## Straight Thread Internal (Inch)

Inch outside diameter

d	R <sub>p</sub> <sup>1)</sup>	Code No.	p	l	e	t	SW	Weight (g)
1/4"	1/4"	HLK-10TI-13-R14- __	22	20	17	10	22	100
3/8"	3/8"	HLK-10TI-17-R38- __	29	28	25	10	27	120
1/2"	1/2"	HLK-10TI-21-R12- __	34	39,5	25	18	32	150
3/4"	3/4"	HLK-10TI-26-R34- __	39	44,5	25	15	36	190
1"	1"	HLK-10TI-33-R1- __	52	66	42	17	46	520
1 1/4"	1 1/4"	HLK-10TI-42-R114- __	61	67,5	42	19	55	700
1 1/2"	1 1/2"	HLK-10TI-48-R112- __	68	70	42	21	60	830
2"	2"	HLK-10TI-60-R2- __	82	73	42	24	75	1070

All dimensions in millimeters, except specially marked  
Errors and technical changes reserved

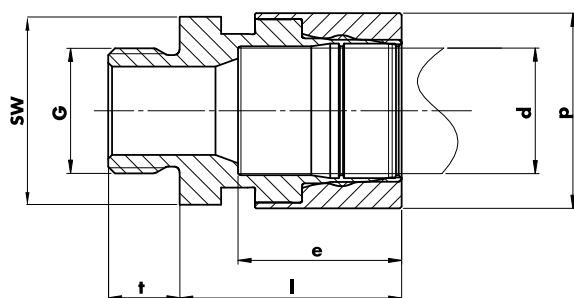
<sup>1)</sup>R<sub>p</sub>: Cylindrical internal thread with pressure tight joints according to EN 10226-1 - other types (G or NPT etc.) on request

### Material and Order Codes

- CC:** Body & Press-Ring: Steel Galvanized: Example: HLK-10TI-33G1-CC
- XC:** Body: Stainless Steel; Press-Ring: Steel galvanized: Example: HLK-10TI-33G1-XC
- XX:** Body & Press-Ring: Stainless Steel: Example: HLK-10TI-33G1-XX

Other dimensions or materials on request





## Straight Thread External (Metric)

Metric outside diameter

d	G <sup>2)</sup>	Code No.	p	l	e	t	SW	Weight (g)
12	1/4"	HLK-10TE-12-G14- __	22	20	17	9	22	80
16	3/8"	HLK-10TE-16-G38- __	27	28	25	12	27	120
18	3/8"	HLK-10TE-18-G38- __	29	28	25	12	27	120
20	1/2"	HLK-10TE-20-G12- __	32	28	25	16	32	150
22	1/2"	HLK-10TE-22-G12- __	34	28	25	16	32	150
25	3/4"	HLK-10TE-25-G34- __	37	28	25	17	41	170
28	3/4"	HLK-10TE-28-G34- __	40	28	25	17	41	200
30	3/4"	HLK-10TE-30-G34- __	47	45	42	17	41	400
35	1"	HLK-10TE-35-G1- __	55	45	42	19	50	600
38	1"	HLK-10TE-38-G1- __	55	45	42	22	50	650
54	2"	HLK-10TE-54-G2- __	74	45	42	24	72	950

## Straight Thread External (Inch)

Inch outside diameter

d	G <sup>2)</sup>	Code No.	p	l	e	t	SW	Weight (g)
1/4"	1/4"	HLK-10TE-13-G14- __	22	25	17	9	22	100
3/8"	3/8"	HLK-10TE-17-G38- __	29	25	25	12	27	120
1/2"	1/2"	HLK-10TE-21-G12- __	34	25	25	16	32	150
3/4"	3/4"	HLK-10TE-26-G34- __	39	39	25	17	36	190
1"	1"	HLK-10TE-33-G1- __	52	59	42	17	46	520
1 1/4"	1 1/4"	HLK-10TE-42-G114- __	61	59	42	20	55	700
1 1/2"	1 1/2"	HLK-10TE-48-G112- __	68	59	42	20	60	830
2"	2"	HLK-10TE-60-G2- __	82	62	42	22	75	1070

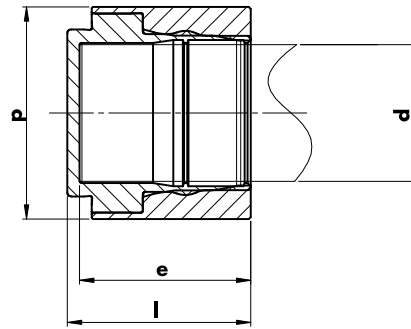
All dimensions in millimeters, except specially marked  
Errors and technical changes reserved

<sup>2)</sup>G: Cylindrical external thread with pressure tight joints according to ISO 228-1 - other types (R or NPT etc.) on request

### Material and Order Codes

**CC:** Body & Press-Ring: Steel Galvanized: Example: HLK-10TE-13-G14-CC  
**XC:** Body: Stainless Steel; Press-Ring: Steel galvanized: Example: HLK-10TE-13-G14-XC  
**XX:** Body & Press-Ring: Stainless Steel: Example: HLK-10TE-13-G14-XX

*Other dimensions or materials on request*



## End Cap (Metric)

Metric outside diameter

d	Code No.	p	l	e	Weight (g)
12	HLK-10EC-12-__	22	20	17	55
16	HLK-10EC-16-__	27	28	25	70
18	HLK-10EC-18-__	29	28	25	80
20	HLK-10EC-20-__	32	28	25	80
22	HLK-10EC-22-__	34	28	25	105
25	HLK-10EC-25-__	37	28	25	115
28	HLK-10EC-28-__	40	28	25	131
30	HLK-10EC-30-__	47	45	42	340
35	HLK-10EC-35-__	55	45	42	410
38	HLK-10EC-38-__	55	45	42	419
54	HLK-10EC-54-__	74	45	42	720

## End Cap (Inch)

Inch outside diameter

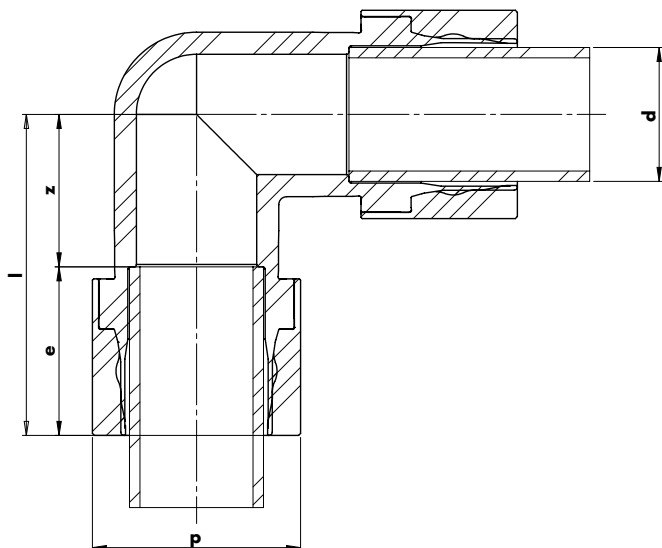
d	Code No.	p	l	e	Weight (g)
1/4"	HLK-10EC-13-__	22	20	17	55
3/8"	HLK-10EC-17-__	29	28	25	70
1/2"	HLK-10EC-21-__	34	28	25	95
3/4"	HLK-10EC-26-__	39	28	25	126
1"	HLK-10EC-33-__	52	45	42	411
1 1/4"	HLK-10EC-42-__	61	45	42	508
1 1/2"	HLK-10EC-48-__	68	45	42	620
2"	HLK-10EC-60-__	82	45	42	792

All dimensions in millimeters, except specially marked  
Errors and technical changes reserved

### Material and Order Codes

- CC:** Body & Press-Ring: Steel Galvanized: Example: HLK-10EC-17-CC
- XC:** Body: Stainless Steel; Press-Ring: Steel galvanized: Example: HLK-10EC-17-XC
- XX:** Body & Press-Ring: Stainless Steel: Example: HLK-10EC-17-XX

Other dimensions or materials on request



no welded parts!

## Elbow 90° (Metric)

Metric outside diameter

d	Code No.	p	l	e	z	Weight (g)
12	HLK-10L90-12-__	22	50	17	33	114
16	HLK-10L90-16-__	27	60	25	35	290
18	HLK-10L90-18-__	29	60	25	35	273
20	HLK-10L90-20-__	32	65	25	40	380
22	HLK-10L90-22-__	34	65	25	40	365
25	HLK-10L90-25-__	37	65	25	40	480
28	HLK-10L90-28-__	40	65	25	40	424
30	HLK-10L90-30-__	47	80	42	38	982

## Elbow 90° (Inch)

Inch outside diameter

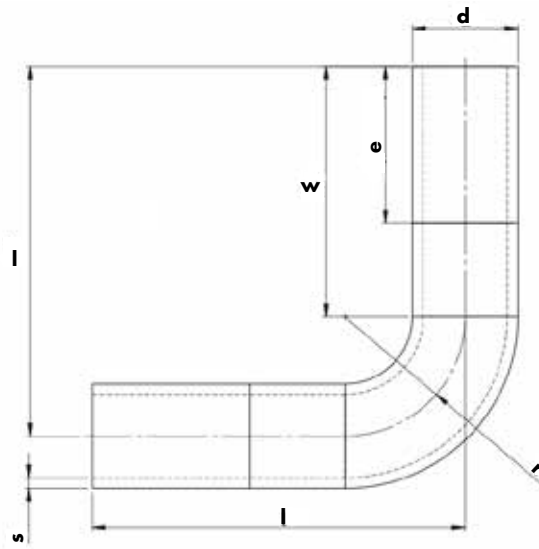
d	Code No.	p	l	e	z	Weight (g)
1/4"	HLK-10L90-13-__	22	50	17	33	109
3/8"	HLK-10L90-17-__	29	60	25	35	273
1/2"	HLK-10L90-21-__	34	65	25	40	368
3/4"	HLK-10L90-26-__	39	65	25	40	437
1"	HLK-10L90-33-__	52	80	42	38	1124

All dimensions in millimeters, except specially marked  
 Errors and technical changes reserved

### Material and Order Codes

- CC:** Body & Press-Ring: Steel Galvanized: Example: HLK-10L9-13-CC
- XC:** Body: Stainless Steel; Press-Ring: Steel galvanized: Example: HLK-10L9-13-XC
- XX:** Body & Press-Ring: Stainless Steel: Example: HLK-10L9-13-XX

Other dimensions or materials on request



## Banded Pipe 90° (Metric)

Metric outside diameter

d	Code No.	r	s	e	w	l	Weight (g)
35	HLK-10BP90-35- _	70	3	42	100	170	500
38	HLK-10BP90-38- _	70	3	42	100	170	500
54	HLK-10BP90-54- _	100	3,2	42	100	200	1400

## Banded Pipe 90° (Inch)

Inch outside diameter

d	Code No.	r	s	e	w	l	Weight (g)
1¼"	HLK-10BP90-42- _	85	3,2	42	100	185	600
1½"	HLK-10BP90-48- _	100	3,2	42	100	200	1000
2"	HLK-10BP90-60- _	120	3,6	42	100	220	1600

All dimensions in millimeters, except specially marked  
Errors and technical changes reserved



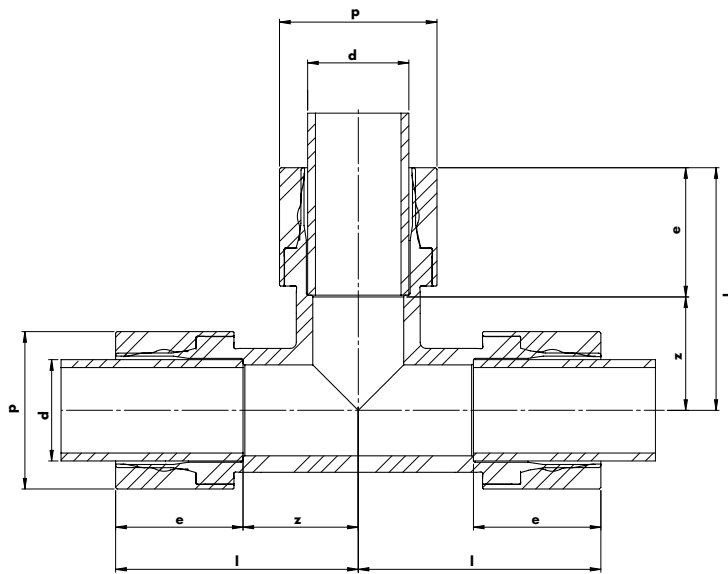
For 90° shapes Haelok offers banded pipes in connection with our straight fittings. The connection is done with two straight fittings. On request and on minimum quantities Haelok supplies one-piece, hot forged bends. Please contact your customer service representative for further information.

Delivery is banded pipe only. Please add corresponding fittings (straight, T-, elbow, etc.) according to your usage to the order.

### Material and Order Codes

**C:** Body: Steel Galvanized: Example: HLK-10BP90-42-C  
**X:** Body: Stainless Steel: Example: HLK-10BP90-42-X

Other dimensions or materials on request



no welded parts!

## Union Tee (Metric)

Metric outside diameter

d	Code No.	p	l	e	z	Weight (g)
12	HLK-10T3-12-__	22	50	17	33	157
16	HLK-10T3-16-__	27	60	25	35	400
18	HLK-10T3-18-__	29	60	25	35	364
20	HLK-10T3-20-__	32	65	25	40	498
22	HLK-10T3-22-__	34	65	25	40	485
25	HLK-10T3-25-__	37	65	25	40	612
28	HLK-10T3-28-__	40	65	25	40	555
30	HLK-10T3-30-__	47	80	42	38	1316
35	HLK-10T3-35-__	55	80	42	38	1702
38	HLK-10T3-38-__	55	80	42	38	1606
54	HLK-10T3-54-__	74	100	42	58	3364

## Union Tee (Inch)

Inch outside diameter

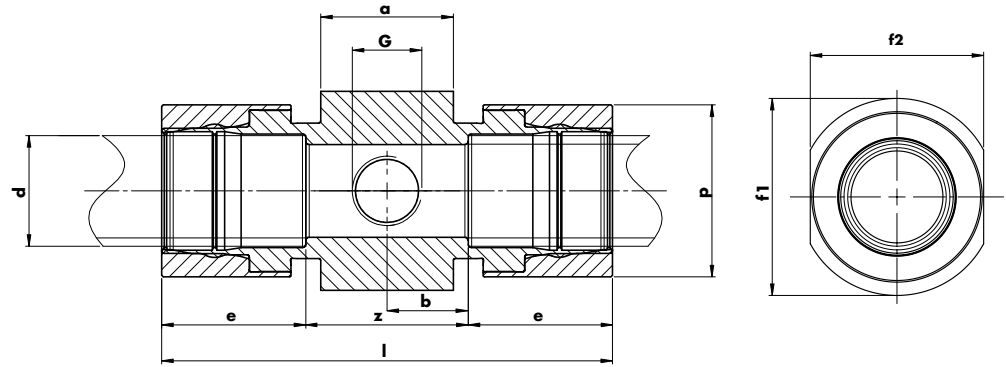
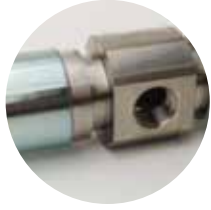
d	Code No.	p	l	e	z	Weight (g)
1/4"	HLK-10T3-13-__	22	50	17	33	153
3/8"	HLK-10T3-17-__	29	60	25	35	362
1/2"	HLK-10T3-21-__	34	65	25	40	487
3/4"	HLK-10T3-26-__	39	65	25	40	570
1"	HLK-10T3-33-__	52	80	42	38	1586
1 1/4"	HLK-10T3-42-__	61	95	42	53	2443
1 1/2"	HLK-10T3-48-__	68	95	42	53	2435
2"	HLK-10T3-60-__	82	100	42	58	3428

All dimensions in millimeters, except specially marked  
Errors and technical changes reserved

### Material and Order Codes

- CC:** Body & Press-Ring: Steel Galvanized: Example: HLK-10T3-13-CC
- XC:** Body: Stainless Steel; Press-Ring: Steel galvanized: Example: HLK-10T3-13-XC
- XX:** Body & Press-Ring: Stainless Steel: Example: HLK-10T3-13-XX

Other dimensions or materials on request



## Distributor 2 Outlets (Metric)

Metric outside diameter

d	Code No.	p	l	e	a	b	f <sub>1</sub>	f <sub>2</sub>	G <sup>1)</sup>	z	Weight (g)
18	HLK-10D2-18-G38-__	29	99	25	40	24,5	49,5	40,5	3/8"	49	660
20	HLK-10D2-20-G38-__	32	99	25	40	24,5	49,5	40,5	3/8"	49	640
22	HLK-10D2-22-G12-__	34	99	25	40	24,5	49,5	40,5	1/2"	49	624
25	HLK-10D2-25-G12-__	37	99	25	40	24,5	49,5	40,5	1/2"	49	630
28	HLK-10D2-28-G12-__	40	99	25	40	24,5	49,5	40,5	1/2"	49	609
30	HLK-10D2-30-G12-__	47	136	43,5	40	24,5	54,5	46,5	1/2"	49	1153
35	HLK-10D2-35-G12-__	55	136	43,5	40	24,5	60	52,8	1/2"	49	1395
38	HLK-10D2-38-G12-__	55	136	43,5	40	24,5	60	52,8	1/2"	49	1398
54	HLK-10D2-54-G12-__	74	136	43,5	40	24,5	89,5	84,8	1/2"	49	2300

## Distributor 2 Outlets (Inch)

Inch outside diameter

d	Code No.	p	l	e	a	b	f <sub>1</sub>	f <sub>2</sub>	G <sup>1)</sup>	z	Weight (g)
3/8"	HLK-10D2-17-G38-__	29	99	25	40	24,5	49,5	40,5	3/8"	49	680
1/2"	HLK-10D2-21-G38-__	34	99	25	40	24,5	49,5	40,5	3/8"	49	630
3/4"	HLK-10D2-26-G12-__	39	99	25	40	24,5	49,5	40,5	1/2"	49	612
1"	HLK-10D2-33-G12-__	52	136	43,5	40	24,5	60	52,8	1/2"	49	1419
1 1/4"	HLK-10D2-42-G12-__	61	136	43,5	40	24,5	64,5	57,9	1/2"	49	1583
1 1/2"	HLK-10D2-48-G12-__	68	136	43,5	40	24,5	69,5	63,4	1/2"	49	1779
2"	HLK-10D2-60-G12-__	82	136	43,5	40	24,5	89,5	84,8	1/2"	49	2683

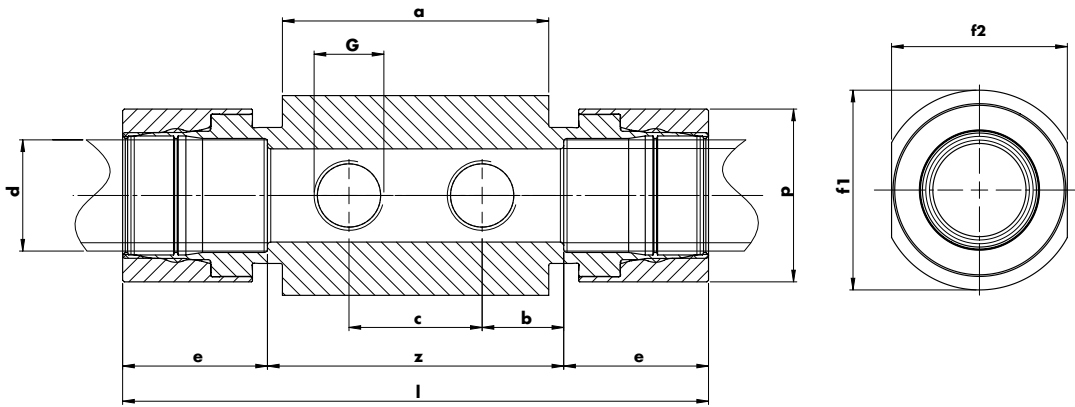
All dimensions in millimeters, except specially marked  
Errors and technical changes reserved

<sup>1)</sup>G: Cylindrical internal thread with pressure tight joints according to ISO 228-1 - other types (R or NPT etc.) on request

### Material and Order Codes

- CC:** Body & Press-Ring: Steel Galvanized: Example: HLK-10D2-21-G12-CC
- XC:** Body: Stainless Steel; Press-Ring: Steel galvanized: Example: HLK-10D2-21-G12-XC
- XX:** Body & Press-Ring: Stainless Steel: Example: HLK-10D2-21-G12-XX

Other dimensions or materials on request



## Distributor 4 Outlets (Metric)

Metric outside diameter

d	Code No.	p	l	e	a	b	c	f <sub>1</sub>	f <sub>2</sub>	G <sup>1)</sup>	z	Weight (g)
18	HLK-10D4-18-G38-__	29	139	25	80	19,5	50	49,5	40,5	3/8"	89	1060
20	HLK-10D4-20-G38-__	32	139	25	80	19,5	50	49,5	40,5	3/8"	89	1040
22	HLK-10D4-22-G12-__	34	139	25	80	19,5	50	49,5	40,5	1/2"	89	1043
25	HLK-10D4-25-G12-__	37	139	25	80	19,5	50	49,5	40,5	1/2"	89	1030
28	HLK-10D4-28-G12-__	40	139	25	80	19,5	50	49,5	40,5	1/2"	89	971
30	HLK-10D4-30-G12-__	47	176	43,5	80	19,5	50	54,5	46,5	1/2"	89	1628
35	HLK-10D4-35-G12-__	55	176	43,5	80	19,5	50	60	52,8	1/2"	89	1960
38	HLK-10D4-38-G12-__	55	176	43,5	80	19,5	50	60	52,8	1/2"	89	1963
54	HLK-10D4-54-G12-__	74	176	43,5	80	19,5	50	89,5	84,8	1/2"	89	3849

## Distributor 4 Outlets (Inch)

Inch outside diameter

d	Code No.	p	l	e	a	b	c	f <sub>1</sub>	f <sub>2</sub>	G <sup>1)</sup>	z	Weight (g)
3/8"	HLK-10D4-17-G38-__	29	139	25	80	19,5	50	49,5	40,5	3/8"	89	1080
1/2"	HLK-10D4-21-G38-__	34	139	25	80	19,5	50	49,5	40,5	1/2"	89	1040
3/4"	HLK-10D4-26-G12-__	39	139	25	80	19,5	50	49,5	40,5	1/2"	89	984
1"	HLK-10D4-33-G12-__	52	176	43,5	80	19,5	50	60	52,8	1/2"	89	2021
1 1/4"	HLK-10D4-42-G12-__	61	176	43,5	80	19,5	50	64,5	57,9	1/2"	89	2176
1 1/2"	HLK-10D4-48-G12-__	68	176	43,5	80	19,5	50	69,5	63,4	1/2"	89	2401
2"	HLK-10D4-60-G12-__	82	176	43,5	80	19,5	50	89,5	84,8	1/2"	89	3849

All dimensions in millimeters, except specially marked  
Errors and technical changes reserved

<sup>1)</sup>G: Cylindrical internal thread with pressure tight joints according to ISO 228-1 - other types (R or NPT etc.) on request

### Material and Order Codes

**CC:** Body & Press-Ring: Steel Galvanized: Example: HLK-10D4-21-G12-CC  
**XC:** Body: Stainless Steel; Press-Ring: Steel galvanized: Example: HLK-10D4-21-G12-XC  
**XX:** Body & Press-Ring: Stainless Steel: Example: HLK-10D4-21-G12-XX

Other dimensions or materials on request

## Haelok Press Tools

The hydraulic installation tool behind the world's strongest mechanical pipe connection, installs the HAELOK fittings in a few simple steps. It delivers everytime accurate, reliable and repeatable results, regardless of the fitting material or the mood of the installer. The HAELOK press tool generates form and restrained pipe joint up to 60(!) tons of axial pressure, forming a physical cold forming of pipe and fitting.

It's as strong as welding - but the only mechanical alternative.



# Press Tools

The Haelok press tool provides quick, easy and accurate pressing results that are always at the same high quality. The Haelok press tools technology allows a faster installation time than any other solution, thus provides economic efficiency to your installation.

Our innovative technology allows very short connection time from 3 seconds for smaller dimensions up to 30 seconds for larger couplings.

With the Haelok system you have much lower installation times at constant high quality with no need for certified or specialized workers. It guarantees lower costs when compared to any conventional joining technique.

The Haelok press tools, named PT0613, PT1228 and PT3060, feature a hard-anodised housing for ultimate durability and compact closing mechanism that will be almost maintenance-free. Our new system incorporate a press-tool and hydraulic-unit in one easy unit. The battery driven units are state-of-the-art and guarantee easy, fast and problem-free installation in every situation.

By changing the inlays, within seconds we allow users to adapt the press tool to work with all diameters needed.

## The Haelok Press Tools a complete system



### Press Tool advantages:

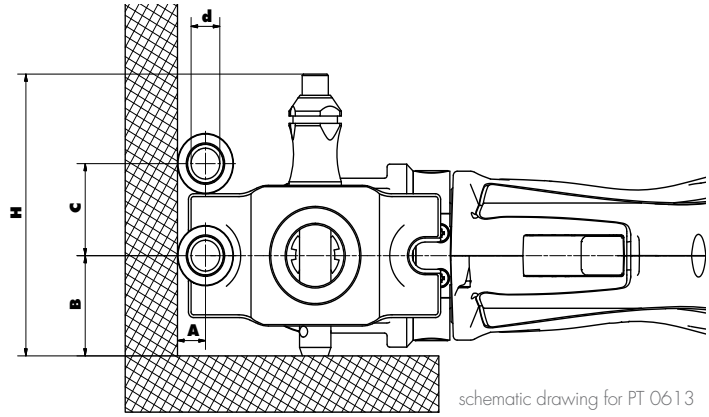
- ➔ Fully automatic press process
- ➔ Very short (<1min) press time
- ➔ Ergonomic design, easy to handle and carry
- ➔ Everything in one box
- ➔ Reduced weight
- ➔ Various models: The right tool for every job



The Haelok  
press tool  
PT0613



The Haelok  
press tool  
PT3060



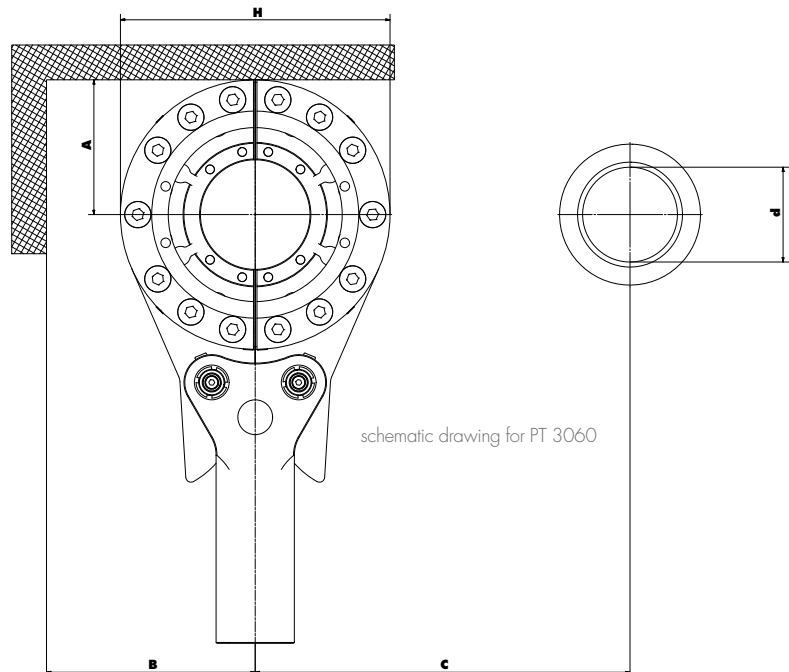
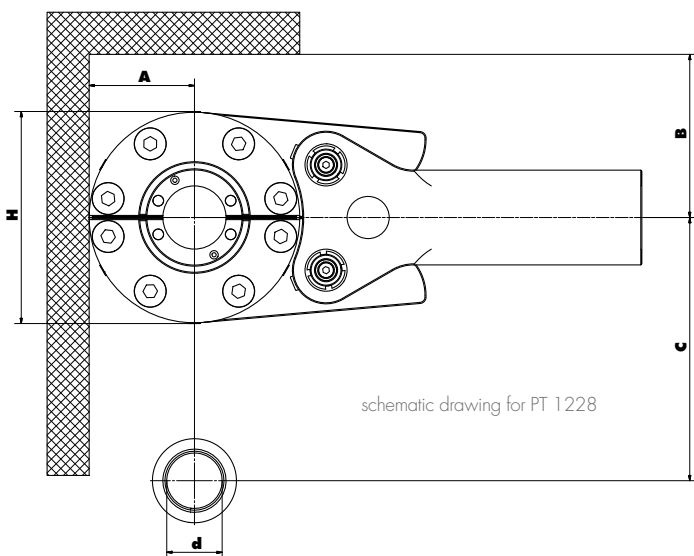
## Press Tool Set\*

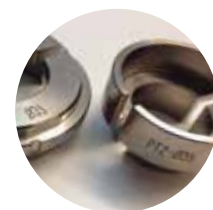
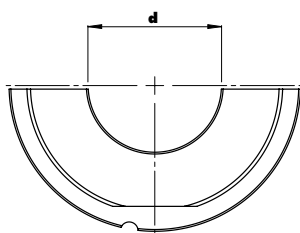
### Measurements

Typ	Code No.	d Pipe diameter	A	B	C	H	Weight (g)	Press time (Ø, sec)
PT0613	HLK-61PS-0613	6	7	40	28	112	3600	5
		13	7	40	32	112		10
PT 1228	HLK-61PS-1228	12	67	100	114	134	6800	12
		28	67	100	124	134		15
PT 3060	HLK-61PS-3060	30	80	110	140	160	8000	16
		60	80	110	150	160		20

\*set includes: Press Tool, Hydraulic Unit, two Battery Packs with Charger, Transport Case

The Press tools set comes in a rugged transport case together with its attached Hydraulic Unit, two battery packs and a charger. Various inlays, according to the pipes in use, make the tool very flexible. The inlays must be ordered separately.





## Inlays for Press Tool

### Measurements

Tool	Code No.	suitable for following Haelok fittings	corresponding pipe diameters
PT1228	HLK-61PI-1213	12	12mm   1/4"
PT1228	HLK-61PI-1516	15   16	15mm   16mm
PT1228	HLK-61PI-1718	17   18	3/8"   18mm
PT1228	HLK-61PI-20	20	20mm
PT1228	HLK-61PI-2122	21   22	1/2"   22mm
PT1228	HLK-61PI-25	25	25mm
PT1228	HLK-61PI-26	26	3/4"
PT1228	HLK-61PI-28	28	28mm
PT3060	HLK-61PI-30	30	30mm
PT3060	HLK-61PI-33	33	1"
PT3060	HLK-61PI-35	35	35mm
PT3060	HLK-61PI-38	38	38mm
PT3060	HLK-61PI-42	42	1 1/4"
PT3060	HLK-61PI-48	48	1 1/2"
PT3060	HLK-61PI-54	54	54mm
PT3060	HLK-61PI-60	60	2"

Please order your inlay set according to the pipe sizes used: An inlay set consists of four pieces that can be easily attached into the corresponding press tool and if not used can be stored safely in its corresponding place in the transport case.

All dimensions in millimeters, except specially marked  
Errors and technical changes reserved

## Accessories



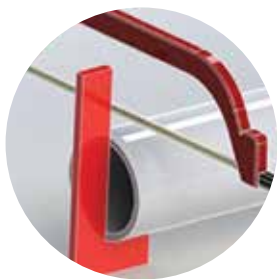
Product	Code No.	length	width	depth	Weight (g)
Transport Case for PT0613	HLK-61PC-0613	571	393	160	c1500
Transport Case for PT1228	HLK-61PC-1228	571	393	160	c1500
Transport Case for PT3060	HLK-61PC-3060	571	393	160	c1500
Battery 12 1,5Ah Li-ion	HLK-61BA-15				
Battery 12 3,0Ah Li-ion	HLK-61BA-30				
Battery Charging Unit	HLK-61BA-CH-EU				

## Installation and Handling of the Haelok press tool

### Installation guide:

The hydraulic installation tool behind the world's strongest mechanical pipe connection, installs the HAELOK fitting in a few simple steps.

Watch our installation movie at [www.haelok.com](http://www.haelok.com) and see how our system delivers everytime accurate, reliable and repeatable results, regardless of the fitting material or the mood of the installer. You get a perfect connection in minutes.



**1. CUT** Cut the pipe perpendicular.



**2. DEBURR** Clean the cut pipe inside and outside.



**3. INSERT** Insert pipe to the inner stop (middle) of the fitting.



**4. MARK** Mark the pipe at the fitting end of the fitting for a visual control after pressing is done.



**5. ATTACH** Attach the press tool firmly over the connection you wish to make, so that the pulling fits into the groove of the fitting.



**6. PRESS** Press the operation button on the battery unit until it stops automatically.



**7. READY!** A perfect connection is created. A visual check on the compression is sufficient: Press ring is in line with the fittings body and you see the marking of the pipe. Your perfect fit!

your partner:



**HAELOK** AG | Josefstrasse 225 | 8005 Zurich | Switzerland  
t: +41 43 501 4555 | f: +41 43 501 4551 | email: [info@haelok.com](mailto:info@haelok.com)  
[www.haelok.com](http://www.haelok.com)