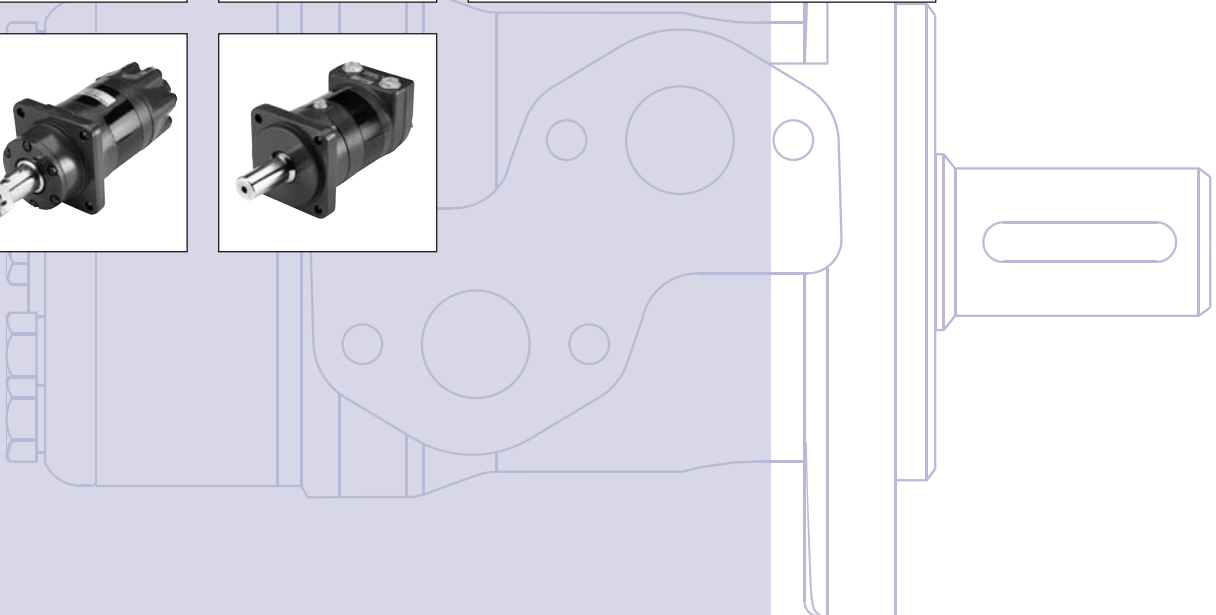


## Seal Kits for Orbital Motors

### Tech Note





**Revision History**

*Table of Revisions*

Date	Page	Changed	Rev
Jul 2007	All	First edition	AA
Sep 2007			AB
May 2010	12	Japan location	BA
Sep 2010	12	New back cover	BB
Jan 2011	3-5	Small updates to tables	BC

**Table of Contents**

Special Versions..... 2  
 Seal Kits; OML, OMM, OMP, DH, OMR, OMR F, DS, DSW and OMH..... 3  
 Seal Kits; OMEW, OMEW F, OMS, OMSS, OMS H, OMT, OMTS,  
 OMT HD, OMT FL, OMT FH, OMT FK, OMV, OMVS and OMV HD..... 4  
 Seal Kits; TMK, TMK FL, TMT, TMT FL, TMTW, and TMVW ..... 5  
 Name Plate, Where do I look ..... 6  
 Consecutive Motor Code ..... 10

**Special Versions**

The list of seal kits cannot be used when ordering kits for special motor versions. In this respect, please contact the sales organisation for Sauer-Danfoss.

© 2010 Sauer-Danfoss. All rights reserved.

Sauer-Danfoss accepts no responsibility for possible errors in catalogs, brochures and other printed material. Sauer-Danfoss reserves the right to alter its products without prior notice. This also applies to products already ordered provided that such alterations can be made without affecting agreed specifications. All trademarks in this material are properties of their respective owners. Sauer-Danfoss, the Sauer-Danfoss logotype, the Sauer-Danfoss S-icon, PLUS+1™, What really matters is inside® and Know-How in Motion™ are trademarks of the Sauer-Danfoss Group.

Front cover illustrations: F301 210, F301 212, F301 214, F301 215, F301 218, F301 226, F301 234, F301 469, F301 245  
 Drawing: 151-1837

**Seal Kits for Orbital Motors Type OML, OMM, OMP, DH, OMR, OMR F, DS, DSW and OMH**

Below a complete survey of code numbers for seal rings, full seal kits and O-rings (short motors) for **standard motors**.

The survey applies to series that can be supplemented with spare parts.

Seal kits survey					
Motor type	Description	Series	Seal kits no. NBR	Production week (ww.yyyy)	
	Shaft versions			Series start	Series stop
OML	Ø16 mm, Ø5/8 in	0	151G2201	23. 1987	-
OMM	Ø16 mm, Ø5/8 in splined shaft B 17 • 14	3	151G0202	19. 1985	-
OMP	Ø25 mm, Ø1 in, 1 in splined shaft	6	151-1154	15. 1982	33. 1994
	Ø25 mm, Ø1 in 1 in spl. shaft, 28.5 mm tapered shaft	7	151-1275	34. 1994	-
	Ø32 mm, 35 mm tapered shaft	6 and 7	151-1279	-	-
	Ø25 mm, Ø1 in, 1 in splined shaft (HPS)	8	151-1286	31. 1998	-
DH	Ø1 in, 1 in splined shaft 6B	0	151-1273	18. 1993	41. 1997
	Ø1 in, 1 in splined shaft 6B	1	151-1286	42. 1997	0
OMR	Ø25 mm, Ø1 in, 1 in splined shaft	4	151-1159	16. 1982	33. 1994
	Ø25 mm, Ø1 in, 1 in spl. shaft, 28.5 mm tapered shaft	5	151-1277	34. 1994	-
	Ø32 mm, 35 mm tapered shaft	4 and 5	151-1166	-	-
	Ø25 mm, Ø1 in, 1 in splined shaft (HPS)	6	151-1286	31. 1998	-
OMR F	Ø25 mm, Ø1 in	5	151-1287	34. 1994	-
DS	Ø1 in, 1 in splined shaft 6B	0	151-1274	18. 1993	41. 1997
	Ø1 in, 1 in splined shaft 6B	1	151-1286	42. 1997	-
DSW	11/4 in tapered shaft	0	11005765	01. 2005	-
OMH	Ø32 mm, Ø35 mm, Ø1/4 in 11/4 in splined shaft, 35 mm tapered shaft	0	151H1100	13. 1989	-

**Seal Kits for Orbital Motors Type OMEW, OMEW F, OMS, OMSS, OMS H, OMT, OMTS, OMT HD, OMT FL, OMT FH, OMT FK, OMV, OMVS and OMV HD**

Below a complete survey of code numbers for seal rings, full seal kits and O-rings (short motors) for **standard motors**.

The survey applies to series that can be supplemented with spare parts.

Seal kits survey					
Motor type	Description	Series	Seal kits no. NBR	Production week (ww.yyyy)	
	Shaft versions			Series start	Series stop
OMEW	35 mm tapered shaft 1/4 in tapered shaft	0, 1 and 2	151H1101	-	-
OMEW F	1/4 in tapered shaft	0 and 1	151H1105	01. 2003	26. 2005
		2	151H1106	27. 2005	-
OMS	Ø32 mm, Ø1in, Ø11/4 in, 1 1/4 in spl. shaft, 1 in spl. shaft, 35 mm tapered shaft, 1 1/4 in tap. shaft	2 and 3	151F0111	10. 1984	-
	PTO-shaft	2 and 3	151F0117	10. 1984	-
OMSS	Seal kits	2 and 3	151F0103	10. 1984	-
	Kits set*	-	151F1033	-	-
OMT	Ø40 mm, Ø1 1/2 in, 1 1/4 in spl shaft, 1 in 45 mm tapered shaft, 1 3/4 in tap. shaft, PTO shaft	2	151B0113	27. 1988	-
OMTS	Seal set	2	151B0114	27. 1988	-
	Kits set*	2	151B1040	27. 1988	-
OMT HD	Shaft seal NBR shore 90	2	151B0161	27. 1988	-
	Shaft seal NBR shore 70	2	151B1113	27. 1988	-
OMT FX	Wheel Flange	2	151B0152	49.1989	-
OMT FL	Ø40, 1 1/2 in splined shaft	2	151B0153	36.1990	-
OMT FH	Ø40, 1 1/2 in splined shaft	2	151B0154	16.1991	-
OMT FK	Wheel Flange	2	151B0155	43.1991	24.2008
OMT FK	Wheel Flange	2	11050305	25.2008	-
OMV	Ø50 mm, Ø2 1/4 in, 2 1/8 in spl shaft, 60 mm tapered shaft, 2 1/4 in tapered shaft	2	151B0129	27. 1988	-
OMVS	Seal kits	2	151B0125	27. 1988	-
	Kits set*		151B1041	-	-
OMV HD	Shaft seal NBR shore 90	2	151B0162	27. 1988	-
	Shaft seal NBR shore 72	2	151B1114	27. 1988	-

\*O-ring for short motor

**Seal Kits for Orbital Motors Type TMK, TMK FL, TMT, TMT FL, TMTW, and TMVW**

Below a complete survey of code numbers for seal rings, full seal kits and O-rings (short motors) for **standard motors**.

The survey applies to series that can be supplemented with spare parts.

Seal kits survey					
Motor type	Description	Series	Seal kits no. NBR	Production week (ww.yyyy)	
	Shaft versions			Series start	Series stop
TMK	Ø1 1/4 in, 1 1/4 in spl shaft, 1 1/4 in tap. shaft, 1 1/2 in tap. shaft, 1 5/8 in tapered shaft	0	151F0141	02. 2003	-
TMK FL	1 1/2 in tapered shaft	0	151F0142	02. 2003	-
TMT / TMTU	Ø40 mm, Ø1 1/2 in, 45 mm tapered shaft, 1 3/4 in tapered shaft	0	151B0176	49. 1999	-
TMT FL	1 1/2 in tapered shaft, 45 mm tapered shaft	0	151Z2059	49. 1999	-
TMTW	Thread hole flange	0	151Z2072	49. 1999	-
TMVW	Thread hole flange with standard shaft seal	0	151Z7080	39. 2002	-

**Where do I look on the LSHT motor to find series number on old name plate and where do I find production week on new name plate?**

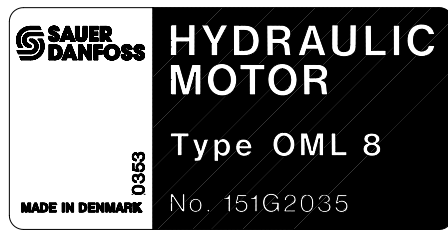
*Old name plate*

- = Series 0
- ① = Series 1
- ② = Series 2 etc

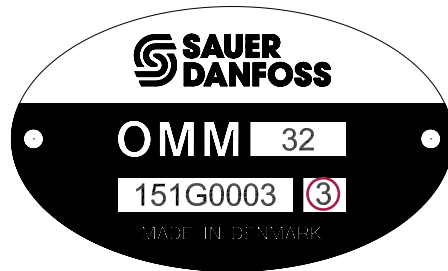
*New name plate*

*Position D: Consecutive motor code see page 10.*

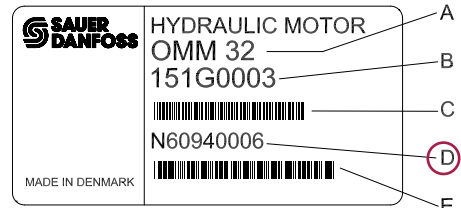
**OML / OMM**



151-2115.10

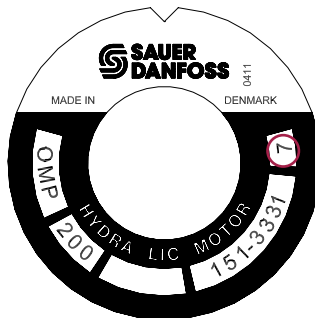


151-2116.10

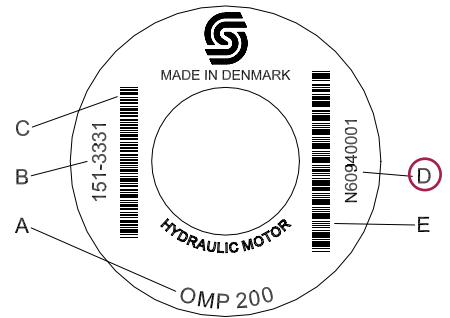


151-2125.10

**OMP / OMR**



151-2117.11



151-2126.10



151-2118.11



151-2127.10

**Where do I look on the LSHT motor to find series number on old name plate and where do I find production week on new name plate?**

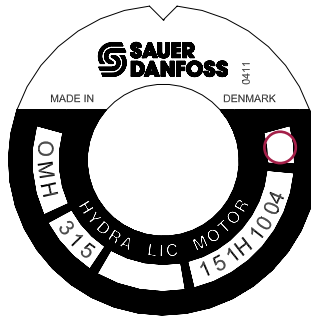
*Old name plate*

- = Series 0
- ① = Series 1
- ② = Series 2 etc

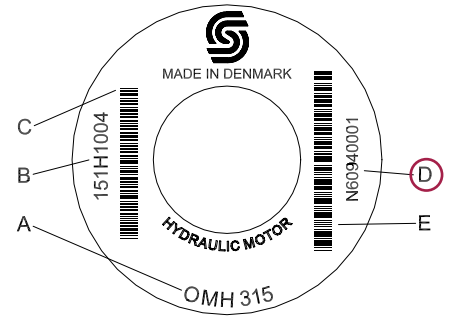
*New name plate*

*Position D: Consecutive motor code see page 10.*

**OMH**

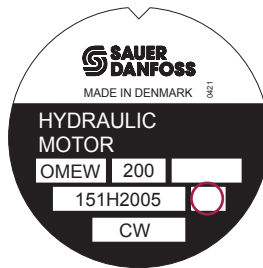


151-2119.11



151-2128.10

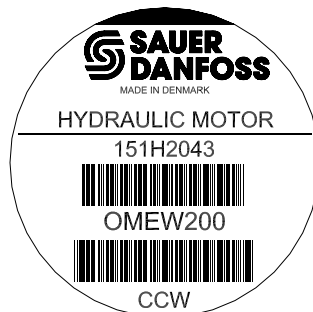
**OMEW**



151-2134.10



151-2129.10



151-2120.11

**Where do I look on the LSHT motor to find series number on old name plate and where do I find production week on new name plate?**

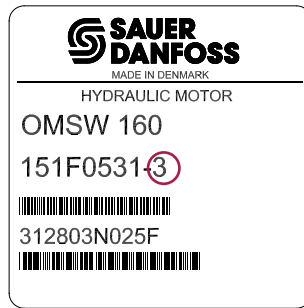
*Old name plate*

- = Series 0
- ① = Series 1
- ② = Series 2 etc

*New name plate*

*Position D: Consecutive motor code see page 10.*

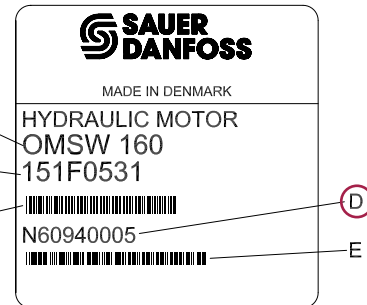
OMH  
OMS / OMT / OMV



151-2121.11



151-2122.11



151-2130.10



**Where do I look on the LSHT motor to find series number on old name plate and where do I find production week on new name plate?**

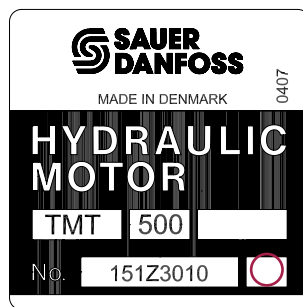
*Old name plate*

- = Series 0
- ① = Series 1
- ② = Series 2 etc

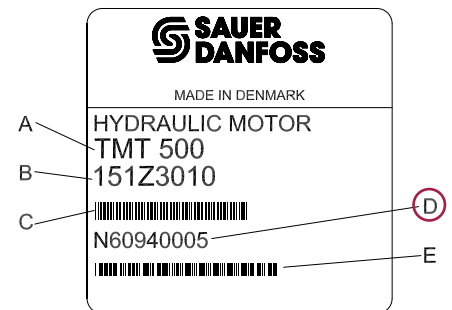
*New name plate*

*Position D: Consecutive motor code see page 10.*

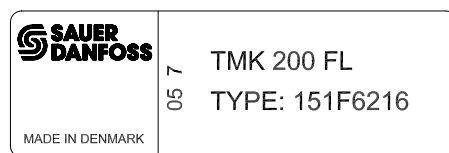
**TMK / TMT / TMV**



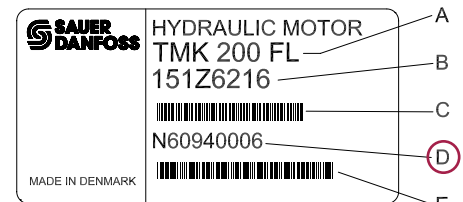
151-2124.11



151-2131.10



151-2123.10

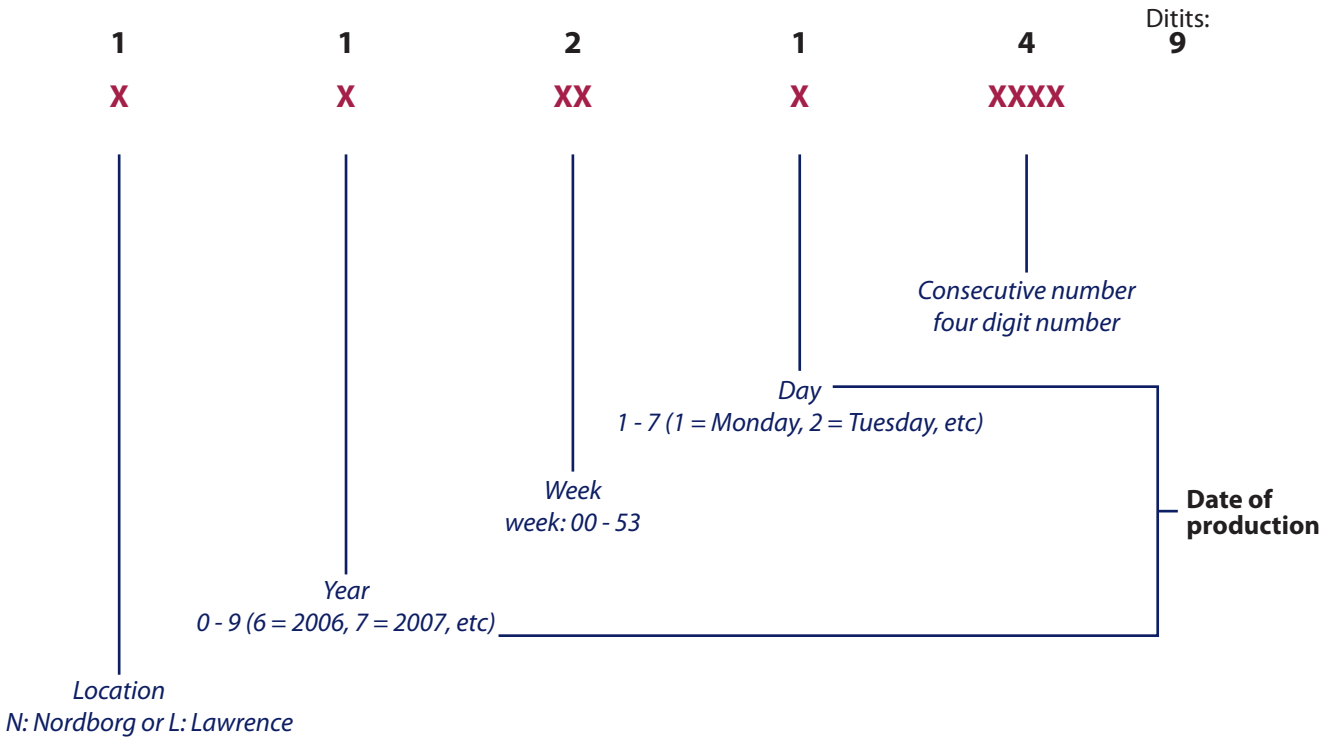


151-2132.10

- A: Type designation
- B: Code number (text form)
- C: Code number (bar code 39)
- D: Consecutive number (text form) incl. date of manufacturing
- E: Consecutive number (bar code 39)



**Specification of the Consecutive Motor Code on New Name Plate**





Seal Kits  
Tech Note  
Notes





**Products we offer:**

- Bent Axis Motors
- Closed Circuit Axial Piston Pumps and Motors
- Displays
- Electrohydraulic Power Steering
- Electrohydraulics
- Hydraulic Power Steering
- Integrated Systems
- Joysticks and Control Handles
- Microcontrollers and Software
- Open Circuit Axial Piston Pumps
- Orbital Motors
- PLUS+1™ GUIDE
- Proportional Valves
- Sensors
- Steering
- Transit Mixer Drives

**Members of the Sauer-Danfoss Group:**

**Comatrol**

[www.comatrol.com](http://www.comatrol.com)

**Schwarz Müller-Inverter**

[www.schwarzmueller-inverter.com](http://www.schwarzmueller-inverter.com)

**Turolla**

[www.turollaocg.com](http://www.turollaocg.com)

**Hydro-Gear**

[www.hydro-gear.com](http://www.hydro-gear.com)

**Sauer-Danfoss-Daikin**

[www.sauer-danfoss-daikin.com](http://www.sauer-danfoss-daikin.com)

**Sauer-Danfoss** is a global manufacturer and supplier of high-quality hydraulic and electronic components. We specialize in providing state-of-the-art technology and solutions that excel in the harsh operating conditions of the mobile off-highway market. Building on our extensive applications expertise, we work closely with our customers to ensure exceptional performance for a broad range of off-highway vehicles.

We help OEMs around the world speed up system development, reduce costs and bring vehicles to market faster.

Sauer-Danfoss – Your Strongest Partner in Mobile Hydraulics.

**Go to [www.sauer-danfoss.com](http://www.sauer-danfoss.com) for further product information.**

Wherever off-highway vehicles are at work, so is Sauer-Danfoss.

We offer expert worldwide support for our customers, ensuring the best possible solutions for outstanding performance. And with an extensive network of Global Service Partners, we also provide comprehensive global service for all of our components.

Please contact the Sauer-Danfoss representative nearest you.

Local address:

Sauer-Danfoss (US) Company 2800 East 13th Street Ames, IA 50010, USA Phone: +1 515 239 6000 Fax: +1 515 239 6618	Sauer-Danfoss ApS DK-6430 Nordborg, Denmark Phone: +45 7488 4444 Fax: +45 7488 4400
Sauer-Danfoss GmbH & Co. OHG Postfach 2460, D-24531 Neumünster Krokamp 35, D-24539 Neumünster, Germany Phone: +49 4321 871 0 Fax: +49 4321 871 122	Sauer-Danfoss-Daikin LTD. Shin-Osaka TERASAKI 3rd Bldg. 6F 1-5-28 Nishimiyahara, Yodogawa-ku Osaka 532-0004, Japan Phone: +81 6 6395 6066 Fax: +81 6 6395 8585