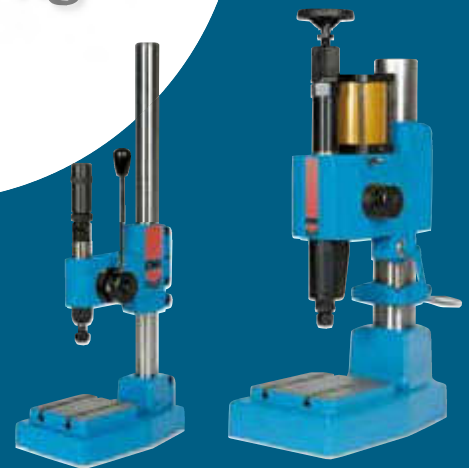


Impactor presses from 600 to 6,000 kg



Impactor presses

**PM6 - PM30 - PM60
PM6P - PM30P - PM60P**

At the time of ISO standardization, identification and traceability of parts, EMG presses propose a range of impactor presses and numbering, riveting and crimping accessories combining performance, precision and security.

This range is found in numerous workshops. The power delivered is constant and regular, and remains exact irrespective of the force applied on the lever.

These presses have an adjustable impact force and a mechanism which forbidding the double impact return effect.

*POSSIBILITY OF MARKING - Indicative values
(number of characters depending on the height and material)*

	600 kg		3 000 kg		6 000 kg	
	Aluminium	Iron	Aluminium	Iron	Aluminium	Iron
1 mm	12	6	28	15	70	32
2 mm	10	4	24	12	60	24
3 mm	6	2	20	9	50	15
4 mm	5	1	16	8	45	13
5 mm	4	1	14	6	43	10
6 mm			6	3	25	8
10 mm			3	1	8	4

1 - Manual Impactor presses from 600 to 6,000 kg



PM6

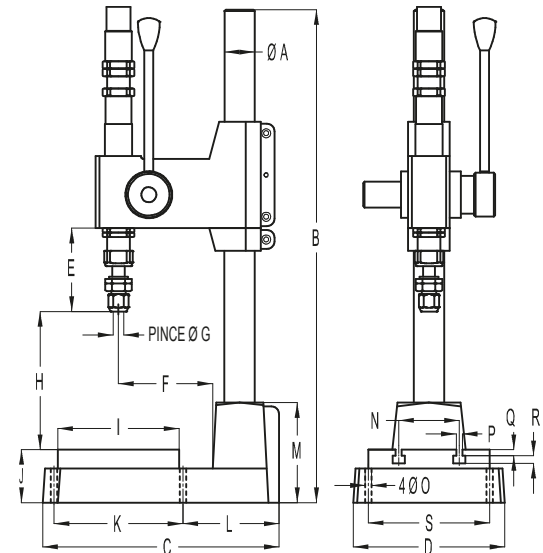
PM30

PM60

	PM6	PM30	PM60
Power (kg)	600	3000	6000
Max. downstroke (mm)	28	50	105
Impact stroke (mm)	0,2	0,2	0,2
Adjustable clear height (mm)	0 to 150	0 to 400	0 to 525
Swan-neck depth (mm)	97,5	140	195
Ø of the shank of the tool (mm)	Ø 8 x 30	Ø 10 x 40	Ø 16 x 50
Table (mm)	100 x 100	165 x 165	220 x 220
Weight (kg)	11	30	110

Table of values of manual impactor presses

	PM6	PM30	PM60		PM6	PM30	PM60
A	Ø 30	Ø 40	Ø 70	K		165	220
B	330	700	1015	L	70	131	210
C	214	313	455	M	57	143	190
D	131	203	280	N	43	56	95
E	46	107	149	O	Ø 6,75	Ø 8,50	Ø 10,50
F	92,5	132	175	P	7	10	12,5
G	Ø 8 x 30	Ø 10 x 40	Ø 16 x 50	Q	8,5	10	12
H	0 to 153	0 to 400	0 to 525	R	6,5	7	10
I	100	165	220	S	85	165	230
J	57	67	90				



2 - Pneumatic Impactor presses from 600 to 6,000 kg



PM6 P

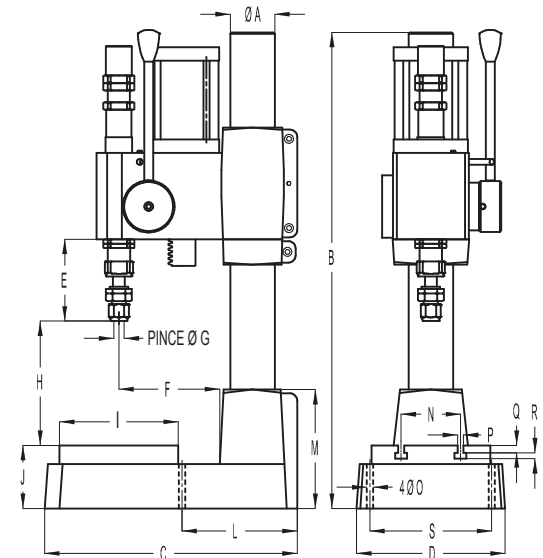
PM30 P

PM60 P

	PM6 P	PM30 P	PM60 P
Power (kg)	600	3000	6000
Max. downstroke (mm)	30	52	62
Impact stroke (mm)	0,2	0,2	0,2
Adjustable clear height (mm)	40 to 300	0 to 380	0 to 315
Swan-neck depth (mm)	97,5	145	212
Ø of the shank of the tool (mm)	Ø 8 x 27	Ø 10 x 40	Ø 16 x 50
Table (mm)	100 x 100	160 x 160	240 x 240
Weight (kg)	15	60	165

Table of values of manual impactor presses

	PM6 P	PM30 P	PM60 P		PM6 P	PM30 P	PM60 P
A	Ø 30	Ø 70	Ø 100	L	70	150	200
B	330	730	830	M	57	148	254
C	214	348	510	N	43	105	175
D	132	195	305	O	Ø 6,75	Ø 8,50	Ø 10,50
E	22	110	150	P	7	9	12,5
F	92,5	135	190	Q	8,5	10,5	13
G	Ø 8 x 30	Ø 10 x 40	Ø 16 x 50	R	6,5	7,5	9
H	0 to 150	0 to 300	0 to 300	S	85	125	220
I	100	160	243				
J	57	85	110				



> Versions of the control for pneumatic presses



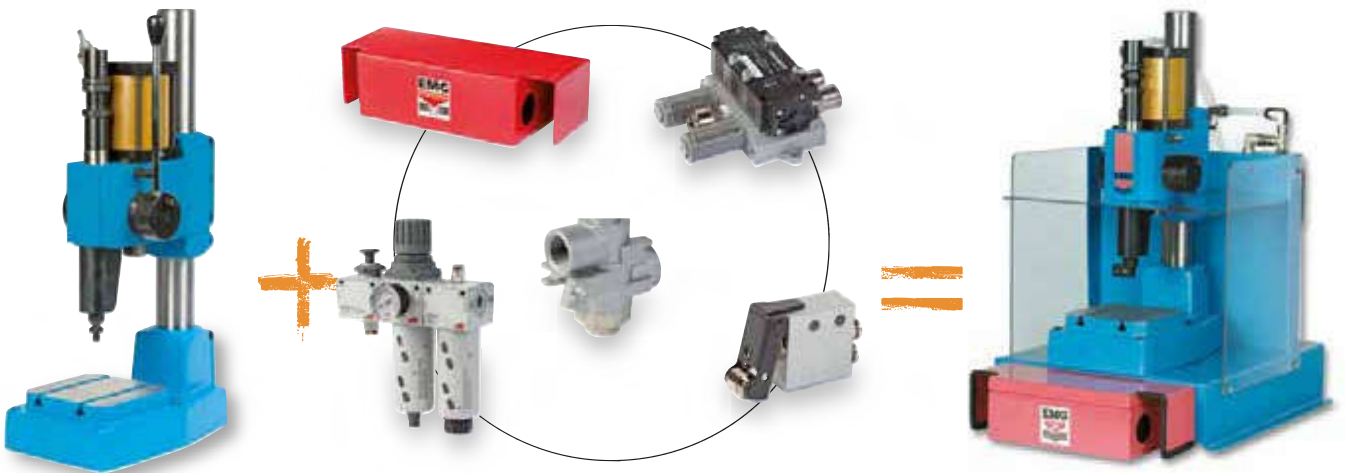
- **Version 1:** intended for integration by the customer

Only machine delivered, no controls, no equipment.

- **Version 2:** running condition with two hand controls

Version 1 + :

- Two hand controls with push buttons.
- Protection of side and top tables.
- Distributor, check valve and pneumatic fittings.
- Regulation and lubrication filter (lockable).

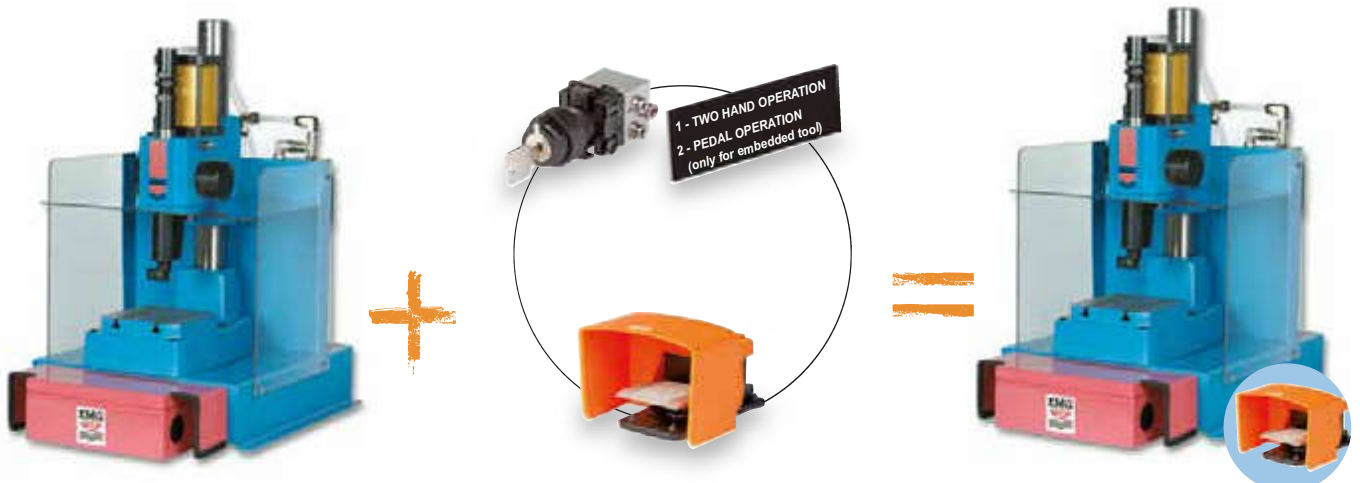


- **Version 3:** running condition with two hand or pedal controls

Version 2 + :

- Pedal control for embedded **tool working***
- 2-position key selector.

**Definition: The embedded tools must be intrinsically safe. Their corresponding openings and safety distances must be in compliance with the standards in force or must not exceed 6 mm. Any risk of additional deformation outside the embedded tools must be avoided.*



> Options

• Counter

5 digit counter with reset.



• Base support and lateral panels

Option press base support and set of 2 350x250 mm side panels.

These accessories allow designing a very ergonomic workstation:

- Legs passage 450 mm.
- Height of base support 730 mm (755 mm with anti-vibration supports).
- Lateral panels inclined for the 350 x 250 mm parts.



• Exhaust filter

Complete exhaust filter system for reduction in pollution and noise levels (75dB instead of 85).



• Anvil stakes

Set of 2 anvil stakes for securing the tools in T slots.



• Marking accessories

A significant range of accessories is available on request: manual or pneumatic numbering heads, press holders with characters, punches...



Additional options

- On request: special bores, complete press head only.
- Special RAL paint.
- Special services on request (press modifications, small tooling and fitting).

