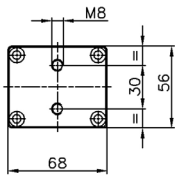


Guide column with intergrated gas spring



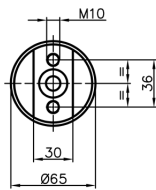
Variable, multi-purpose!

Thanks to our modular system, the Bansbach guided columns are variable in length and can be used in various applications. They are supplied according to your specifications along with a customized, pre-installed gas spring that suits your specific needs minimizing assembly time and costs.



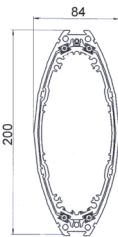
Order number

FSE	H	300	794	250	T	001
guide column	release system	stroke	min. extended length (EL3)	force	model	Index
	H=hydraulic B=bowden wire L=lever	100 - 500	EL3 = stroke x 2,13 + 155	40N - 700 N	T	only for repeating orders



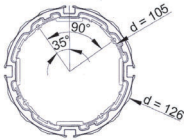
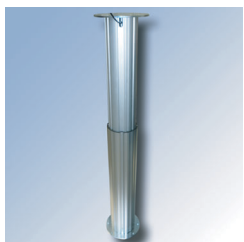
Order number

FSR	L	400	1019	250	T	001
guide column	release system	stroke	min. extended length (EL3)	force	model	Index
	H=hydraulic B=bowden wire L=lever	300 350 400 450	819 919 1019 1119	40N - 700 N	T	only for repeating orders



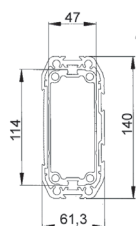
Order number

FSO	H	300	XXX	250	T	001
guide column	release system	stroke	min. extended length (EL3)	force	model	Index
	H=hydraulic B=bowden wire L=lever	100 - 500	depends on model and release system	40N - 700 N	T	only for repeating orders



Order number

FSC	H	300	XXX	250	T	001
guide column	release system	stroke	min. extended length (EL3)	force	model	Index
	H=hydraulic B=bowden wire L=lever	100 - 500	depends on model and release system	40N - 700 N	T	only for repeating orders



Order number

FSS	H	300	XXX	250	T	001
guide column	release system	stroke	min. extended length (EL3)	force	model	Index
	H=hydraulic B=bowden wire L=lever	100 - 500	depends on model and release system	40N - 700 N	T	only for repeating orders