

We provide you:

- Systematic Lubrication Solutions
- Automatic Lubrication Pumps
- Dividers
- Manual Greasing Devices
- Lubrication Accessories

LUBMANN
Centralized Lubrication System



Contact

Add.: Kleiner Johannes 21,
D-91257, Pegnitz,
Germany

Tel.: +49 9241 80 89 87 00

Email: info@lubmann-gmbh.de

Website: www.lubmann-gmbh.de

A Brand from **AUTOL** Group



LUBMANN
Centralized Lubrication System



ABOUT US

Lubmann GmbH was founded by the Autol Group in Dusseldorf in 2015. The AUTOL Group is one of the world's leading manufacturers of centralized lubrication systems. The automatic central lubrication systems of Lubmann GmbH are suitable for a wide range of applications.

Our main product is central lubrication system including progressive pump, block type or sectional divider and lubrication system accessory.

From our new location in Pegnitz we serve german, european and many international customers.

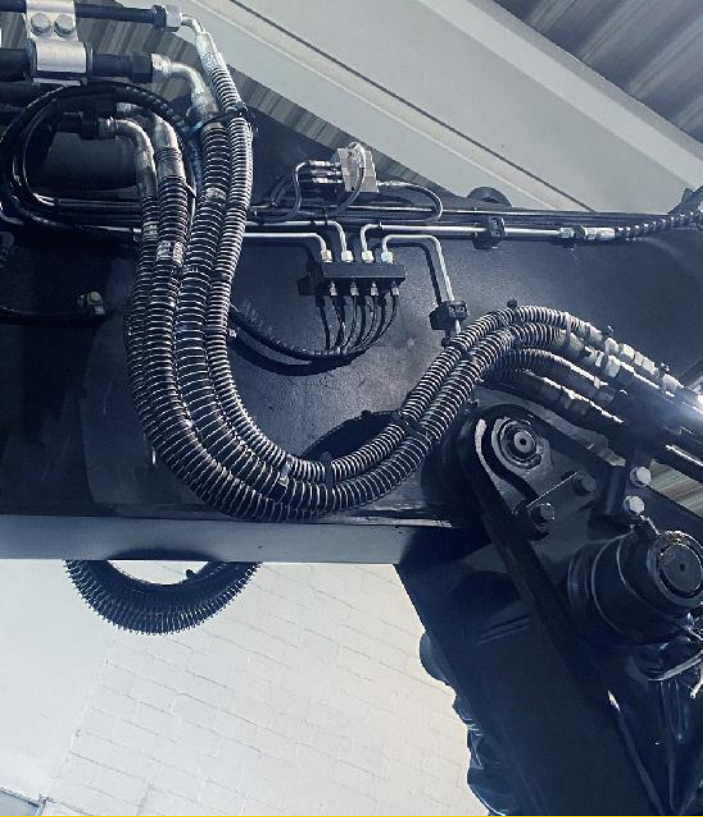


AUTOL GROUP

Both AUTOL and Lubmann systems are available through our global network of lubrication experts, offering you world-class installation and ongoing support on a local level – today and into the future.

With the power of this network, and more than 20 years of combined friction management experience, we can help you improve machine reliability, reduce maintenance, increase productivity, enhance safety and optimize manpower.





ALPB, ALP81 PUMPS

Lubmann progressive centralized lubrication pump type ALPB, ALP81 series have been widely used in industries like wind power, mining, metallurgy, machine tools, textiles, food, ports, commercial vehicles, construction machinery, and heavy mechanical equipment, etc.

ALPB or ALP81 pump lubricates all lube points as required through progressive lubrication system. It can reduce the friction resistance, reduce contact wear and decrease the friction surface temperature. Meanwhile, it plays a supporting role of anti-rust, shock absorption and sealing.

The ALPB or ALP81 series pump differs in reservoir size and control type. It can be controlled by the standard integrated controller with current version AK09, or externally by PLC, board computer or external controller from Lubmann.

JPQ DIVIDERS

The progressive dividers JPQ are manufactured in a variable chip structure, which offers the advantage that the divider can be extended or shortened at random according to the amount of lubrication points. Due to this structure, there is also the possibility of configuring an overall progressive divider from individual divider elements with different outputs per piston stroke.

The divider sensor or indication pin can be used for the monitoring of the dividers.



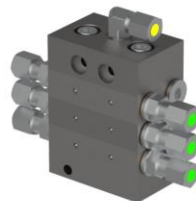
**WE BELIEVE,
THE TECHNOLOGY
BRINGS YOU
EFFICIENCY AND
RELIABILITY.**

OUR APPLICATION RANGE

- Construction Machinery
- Industry
- Wind Power
- Metallurgy
- Machine Tool
- Food
- Port Industry



SPEC. FOR PUMPS AND DIVIDERS



Type	Reservoir Size	Voltage Range	Max. Number of PE	Electrical Connection Interface	Max. Working Pressure	Working Temperature Range	Lubricant
ALPB BYN	2/4/6/8/15/20 Liter	12/24V DC	4	1 x BYN + 1 x BD	350 bar	-35°C to +70°C	Greases up to NLGI- CI.2 No grease with solids, no oil
ALPB HSC		12/24V DC, 230V AC	4	3 x HSC			

Type	Reservoir Size	Voltage Range	Max. Number of PE	Electrical Connection Interface	Max. Working Pressure	Working Temperature Range	Lubricant
ALP81 BYN	1/2 Liter	12/24V DC	3	1 x BYN + 1 x BD	350 bar	-35°C to +70°C	Greases up to NLGI- CI.2 No grease with solids, no oil

* Available PE for ALPB/ALP81: 1,5/2,5/4,5 mm³/min M22x1,5

Type	Min. Outlets	Max. Outlets	Delivery Qty. per outlet for Mid Element (mm ³ /Stroke)	Max. Working Pressure	Working Temperature Range	Lubricant
JPQ	6	18	0,08 0,16 0,24 0,32	300 bar	-35°C to +70°C	Greases up to NLGI- CI.2 No grease with solids, no oil