

 **BEKAMINING**

The Complete System Program
for Mining Machines



AT0000000219 EN 1090200373



 **BEKA**
LUBRICATION

Progressive System Sectional System



The progressive system

The progressive system supplies the lubrication points in a fixed order. It can be operated either with oil or grease up to NLGI 2.

The progressive distributor works consecutively (progressive). Only after the first lube point has received the right lubricant quantity, the distributor continues running and delivers the next metered quantity. The progressive system can be monitored easily and offers various extension possibilities.

BEKA progressive distributors distinguish themselves through modular flexibility instead of rigid block design. Due to the tried-and-tested disc design, BEKA progressive distributors can be adapted at any time to the on-site demands such as number of lube points or output.

The sectional system

The sectional system is an extended progressive system. Large plants with a high number of lubrication points are divided into sections which are supplied by a pump station. Each section can be controlled and monitored individually. Even different application zones can be supplied as required.

The sectional system can be extended virtually without limits and offers the possibility to monitor each single lubrication point.

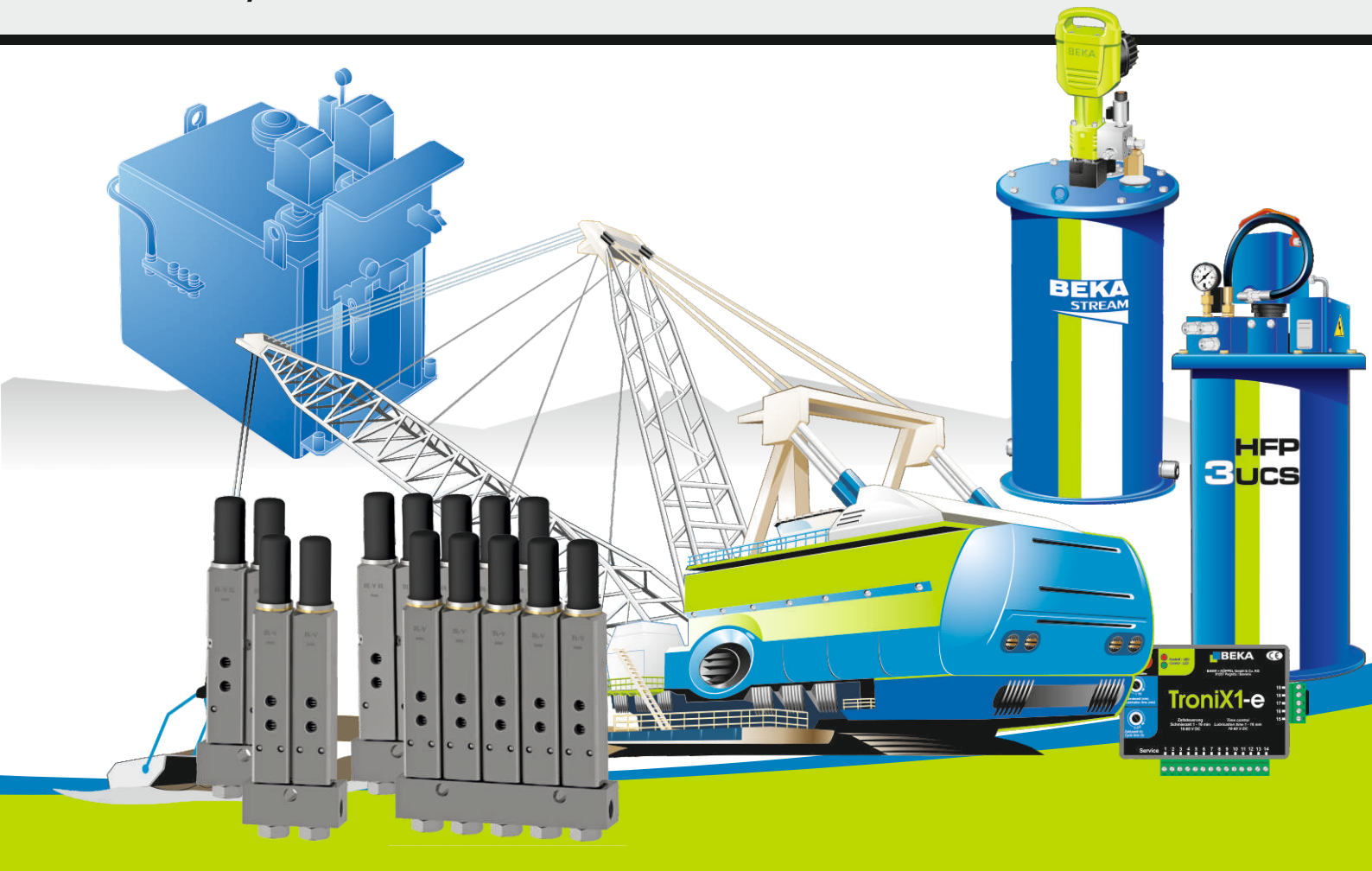


*Lubrication system
at the excavator's
chassis*



Control unit of a sectional system

Single Line System Dual Line System



The single line system

The lubrication pump of the single line system delivers the lubricant to the distributors. The system can be branched as required and can be controlled by integrated or external control units.

The single line system is characterized by easy installation, operation and maintenance and can be extended as required. It is tried-and-tested in large numbers all over the world.

The dual line system

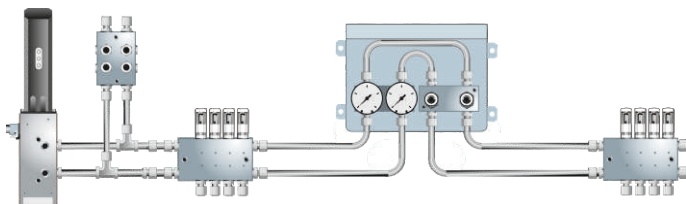
The dual line system is the classical solution for large plants. The lubricant can be transported over long distances. The number of connected lubrication points is virtually unlimited.

Lubrication pumps in all sizes

The BEKA product range offers a big diversity of lubrication pumps:

- With electric, hydraulic or pneumatic drive
- With a wide range of reservoir capacities
- Barrel pumps with electric, hydraulic or pneumatic drive
- Powerful filling pumps

All BEKA pumps distinguish themselves through the highest quality and operational reliability. They are tried-and-tested all over the world.



Components of the dual line system: change-over unit, dual line distributor and pressure switch



Pump station with barrel pumps and control unit

Gear Rim Lubrication with Lubrication Pinion Spray Lubrication System



Gear rim lubrication with lubrication pinion

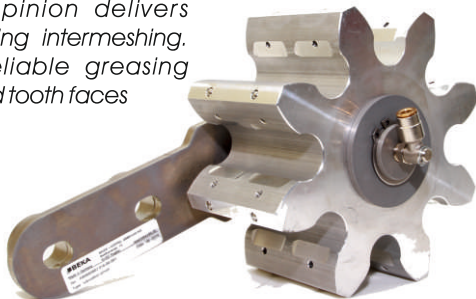
The lubrication system with a lubrication pinion is a reliable solution for the lubrication of gear rims. The lubricant is applied directly via ports in the toothed flanks of the lubrication pinion.

By design of the pinion, lubrication only takes place during the intermeshing. The lubrication pinion is suitable for grease up to NLGI 2.

Advantages of the lubrication pinion:

- Rugged design, made of aluminium
- Adapted to the module of the gear wheel
- Reliable lubrication of the contact zone
- Suitable for grease up to NLGI 2

The lubrication pinion delivers lubricant only during intermeshing. This cares for reliable greasing of the highly loaded tooth faces



The spray lubrication system

The spray lubrication system represents the clean and innovative alternative to conventional gear rim lubrication. The lubricant is transported as an oil-air mixture via compressed air and then divided by patented mixing distributors. Spray nozzles apply the oil-air mixture onto the tooth faces.

The highly efficient and non-contact technology works even with very little rotary motions. Due to the special technology, spray lubrication is even suitable for lubricants with high solids content.

Advantages of the spray lubrication system:

- Precise lubricant application onto the tooth faces
- Only the friction areas are lubricated
- Very low lubricant consumption
- No overlubrication

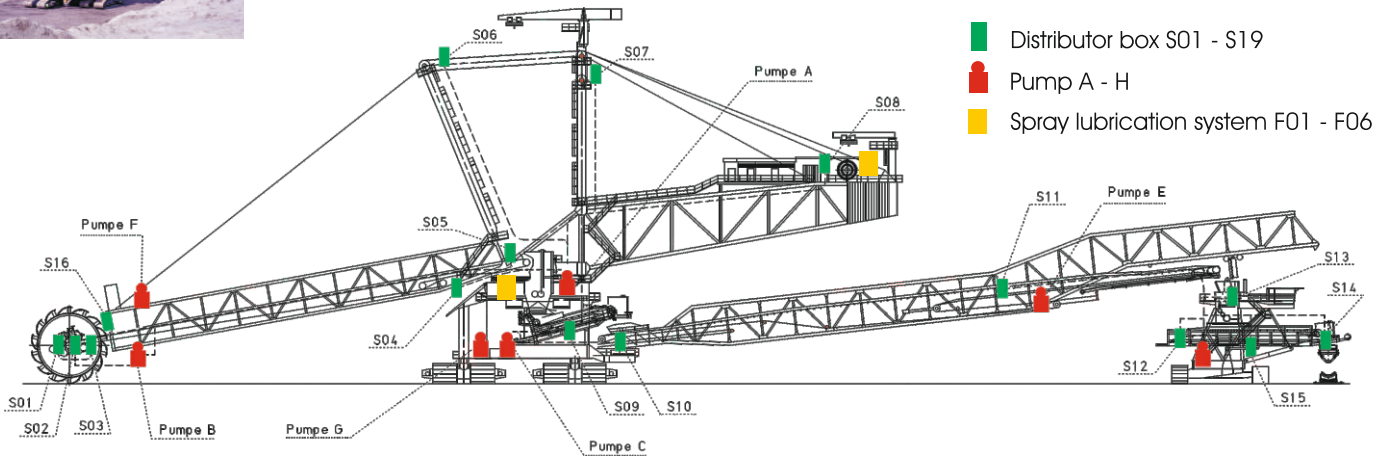
Spray lubrication system installed at a winch drive





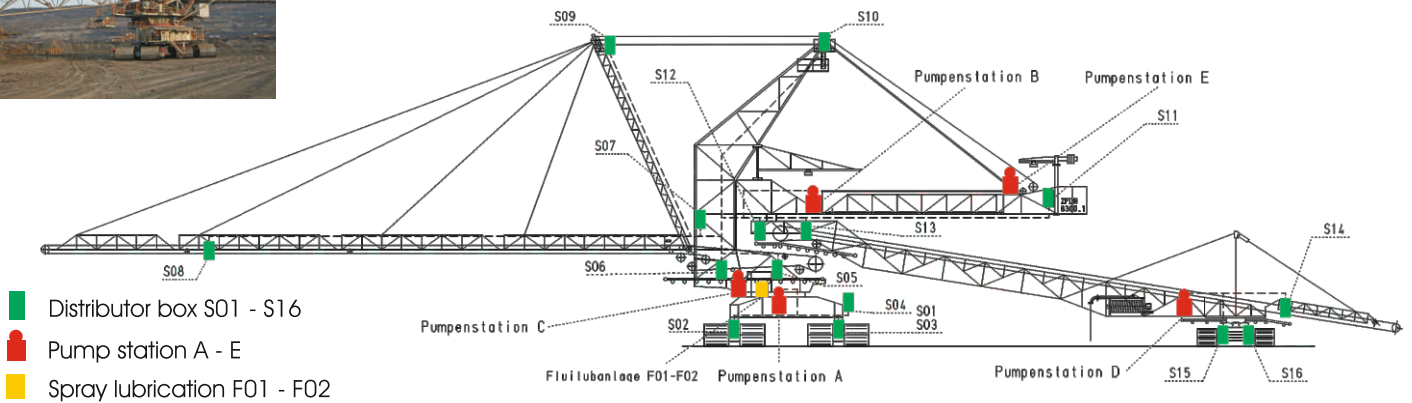
Excavator SchRs 1320/4x30
653 lubrication points

3 hydraulic barrel pumps (200 kg) with dual line and sectional system
2 high pressure pumps FKGM-EP (8 kg) with progressive system
1 high pressure pump F-Super 3 (48 kg) with progressive system
6 spray lubrication systems



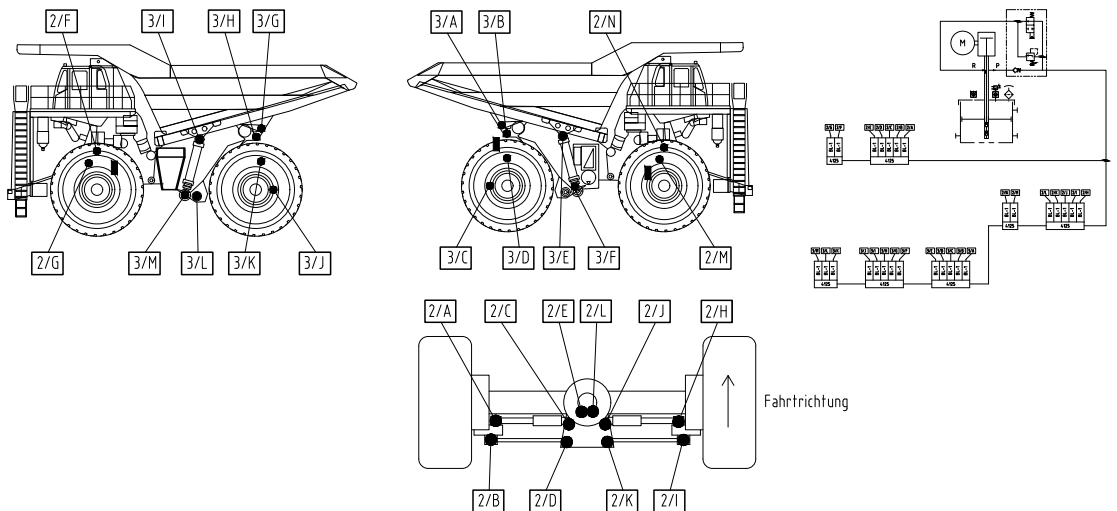
Spreader ZPDH 6300.1-CZ
342 lubrication points

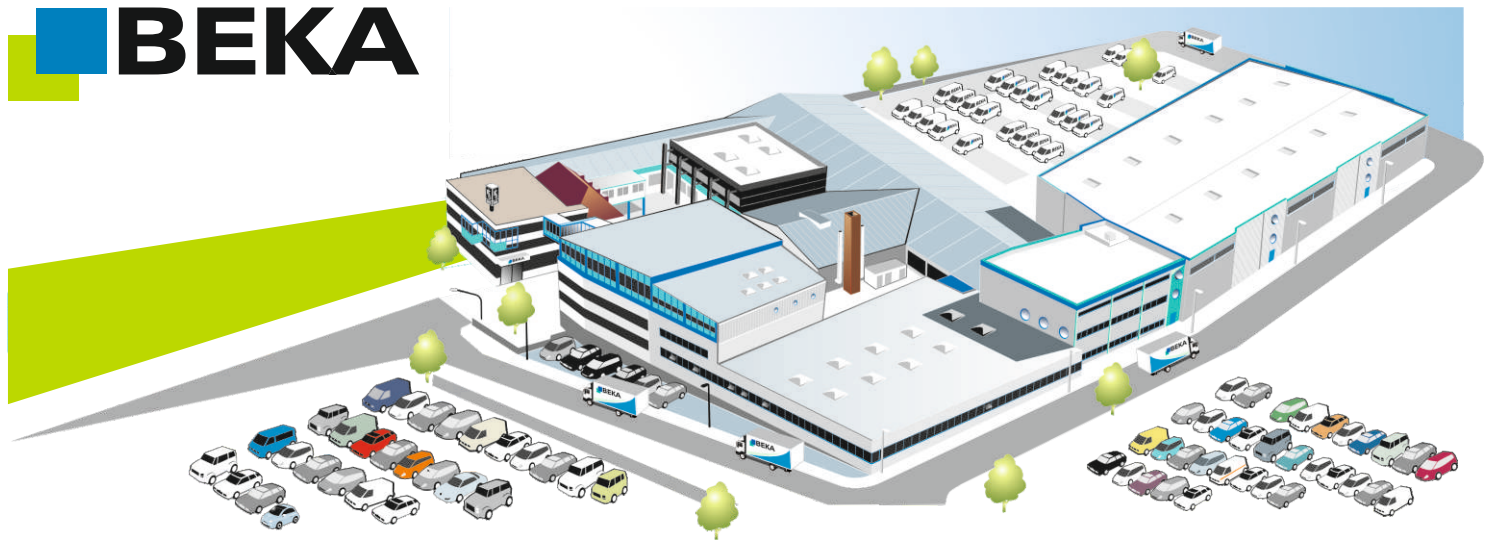
3 hydraulic barrel pumps (200 kg) with dual line and sectional system
1 high pressure pump F-Super 3 (48 kg) with progressive system
1 high pressure pump F-Super 3 (48 kg) with pinion lubrication
2 spray lubrication systems



Dump truck
27 lubrication points

1 electric barrel pump Stream E (41 l/60 lbs) for single-line system
1 external control unit tronic-e





BAIER + KÖPPEL GmbH + Co. KG

BEETHOVENSTRASSE 14
91257 PEGNITZ/BAVARIA
GERMANY

PO BOX 13 20
91253 PEGNITZ/BAVARIA
GERMANY

fon +49 9241 729-0
fax +49 9241 729-50

e-mail beka@beka-lube.de
web www.beka-lube.de



BEKA International

- ALGERIA**
BEKA-LUBE ALGERIE
Zone d'activité n°25
25140 Ain-smara / Constantine
fon +213 31 97 51 12
fax +213 31 97 51 00
e-mail n.hannache@beka-lube.dz
- CHINA**
BEKA Lubrication Systems Co. Ltd.
Room 1803, Building 1 Sandhill Plaza,
No. 2290 Zuchongzhi Road
Pudong New District, Shanghai 201210
fon +86 21 61 46 29 88
fax +86 21 61 46 29 89
e-mail sales@bekaworld.cn
- JAPAN**
BEKA Japan Co., Ltd.
7-5-8 Kumata
Higashi Sumiyoshi Ku
Osaka City, 546-0002
fon +81 (0) 6 6713 2205
fax +81 (0) 6 6713 2206
e-mail info@bekajapan.jp
- SPAIN**
BEKA-LUBE IBÉRICA S.L.U.
C/Albasanz 14 Bis, 2ª J
28037 Madrid
fon +34 91 440 26 56
fax +34 810 520 178
e-mail beka@beka-lube.es
- AUSTRIA**
BEKA-LUBE GmbH
Rottweg 66
5020 Salzburg
fon +43 662 43 84 40
fax +43 662 43 84 403
e-mail office@beka-lube.at
- East Tshair Company Ltd.**
7A Building, Medicine Valley No.1,
No.9 Tianfu Street, Bio-Medicine Park,
Zhongguancun Science Park,
Daxing District, Beijing 102600
fon +86 10 83 681 526
fax +86 10 83 681 520
e-mail beka-lube@bekachina.com
- KOREA**
BAIER + KÖPPEL Korea Liaison Office
A-1406, Sunyudo Woolim Lions Valley
149, Yangpyeong-ro,
Yeongdeungpo-gu, Seoul (150-105)
fon +82 2 20 38 09 88
fax +82 2 20 38 89 34
e-mail info@bekaworld.kr
- SINGAPORE**
BEKAWORLD SINGAPORE PTE. LTD.
51 Changi Business Park Central 2
#07-10 The Signature
Singapore 486066
fon +65 65 38 94 18
fax +65 65 38 94 28
e-mail j.low@bekaworld.sg
- BELGIUM**
BEKA LUBE N.V.S.A.
Demerstraat 32
BE 3200 Aarschot
fon +32 16 64 09 26
fax +32 16 64 05 48
e-mail info@beka-lube.be
- FRANCE**
BEKALUBE FRANCE
4, bis Rue de l'Artisanat
89100 Paron
fon +33 386 83 39 06
fax +33 386 65 52 24
e-mail contacts@bekalube.fr
- BEKA AHWON**
326-1 Dangung Dong
Gunpo Si Kyungki Do Korea
Postal Code 435-822
fon +82 31 451 06 28
fax +82 31 451 09 74
e-mail jhleeahwon@gmail.com
- TURKEY**
BEKAMAKS Makine Merkezi Yaglama
ve Hidrolik Sistemler San. Ve Tic. A.S.
Küçükyaılı Is Merkezi Irmaklar Sk B
Blok No: 72-7B-1 Gime Mah.
34852 Maltepe Istanbul
fon +90 216 367 34 00
fax +90 216 367 33 85
e-mail info@bekamaks.com
- CANADA**
BEKA-LUBE Products Inc.
6581 Kitimat Road, Unit 2
Mississauga, ON L5N 3T5
fon +1 905 821 10 50
fax +1 905 858 05 97
e-mail info@beka-lube.com
- ITALY**
BEKALUBE s.r.l.
Via Rossi 152
I-20862 Arcore (MB)
fon +39 039 61 80 088
fax +39 039 61 75 23
e-mail servizioclienti@bekalube.it
- NETHERLANDS**
BEKA NEDERLAND B.V.
Wagenmakerij 11
4762 AV Zevenbergen
fon +31 168 37 15 38
fax +31 168 33 83 29
e-mail info@beka.nl
- USA**
BEKAWORLD LP
258 Sonwil Drive
Buffalo, NY 14225
fon +1 716 685 37 17
fax +1 716 685 36 34
e-mail info@us.bekaworld.com

Agencies

Argentina	Finland	Lithuania	Slovakia
Australia	Great Britain	Luxemburg	Slovenia
Belarus	Greece	Malaysia	South Africa
Bosnia	Hong Kong	New Zealand	Sweden
Brazil	Hungaria	Norway	Switzerland
Bulgaria	India	Poland	Ukraine
Croatia	Indonesia	Portugal	and others
Czechia	Iceland	Romania	
Denmark	Ireland	Russia	
Estonia	Latvia	Serbia	

- Ⓢ BEKA Subsidiary
Ⓡ BEKA Rep Office
Ⓟ Partner

