

ezW150I & ezW150I/B

The ez-Wheel Series 150 **ezW150I** autonomous wheels are suitable for:

- Industrial trolleys
- Rolling equipment for factories
- Mobile workstations and tools
- ...

All the components necessary for traction are built into the wheel: an electric gear motor, high energy and long life batteries, a power controller ensuring optimum motor control and battery management and a control interface.

Motor

| | |
|----------------------|--|
| Technology | BLDC PM |
| Gearbox | 2-stage helical |
| Indicative lifespan* | 3000 h / 10000 km 1000 000 starts/stops |
| Nominal speed | 166 rpm (4,7 km/h) |
| Nominal power | 170 W (S3, 15% duty cycle, 5min max) |
| Peak torque | 27 Nm |

Battery

| | |
|------------------------|---|
| Electrochemistry | Ni-MH |
| Energy | 70 Wh (1 battery) 140 Wh (2 batteries) |
| Indicative lifespan* | 2-3 years |
| Recharge mode | Charger External power |
| Minimum charging time* | 1.5 hour (to 90%) |

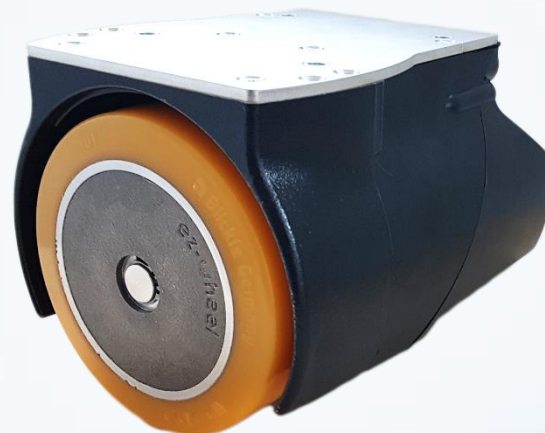
Interface

| | |
|----------|------------------------|
| Wired | Analog Serial / CAN |
| Wireless | no |

The wheel can be used inside or outside, over a wide range of temperatures. The components – including the battery – do not need any inspection or maintenance over the product's whole lifespan.

Conditions of use

| | |
|---------------------|---------------|
| Temperature | -10 to +40 °C |
| IP index | IP43 |
| Maintenance period* | 2 years |



| | |
|-------------------------------|---|
| Diameter | 150 mm |
| Type of Tyre | Blickle Extrathane 92 sh.A Flat profile |
| Speed range (traction) | 0 to 5 km/h |
| Peak pushing effort | 35 daN Moves 1000 kg |
| Nominal performance | 15 daN at 4 km/h |
| Maximum rolling speed | 8 km/h |
| Battery capacity | 0 - 70 - 140 Wh |
| Options | Parking brake /B |

The robust assembly can withstand the stresses of knocks and severe vibration and enables the wheel to carry some load.

Weight

| | |
|--------------|--------------------|
| Wheel weight | 10 kg |
| Maximum load | 400 kg up to 5km/h |

ez-Wheel products are guaranteed 1 year from the date of purchase and 2 years against production defects. Consult the general conditions of sale for more information.

All values are subject to changes without prior notice. *: Values for reference, based on standard condition testing, may vary with different application cases.

