



Suco

Pressure
monitoring

Water Applications



Pressure measurement and

Pressure monitoring

for drinking water, industrial water,
grey water and salt water

The SUCO logo is displayed in white, italicized, serif font on a red rectangular background.

Overpressure safety

SUCO pressure switches and pressure transmitters have been developed in particular for harsh working conditions, high pressures and pressure spikes.

Therefore SUCO pressure monitoring elements do withstand pressure shocks and water hammers to ensure that your products have a long life time.

In addition, the water ingress protection according to IP67 or IP6K9K enables long-term application in locations exposed to dirt and water.

Drinking water



Approval

Drinking water is subject to high legal requirements. SUCO offers a sealing material EPDM-TW that meet FDA and other national and international approvals for drinking water.

By continuous material analysis and consequent adjustment of the technical parameters with our suppliers, SUCO products fulfill the high demands required of applications in the food or drinking water industry.



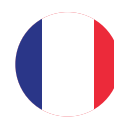
The approval for the sealing material EPDM-TW applies to the following countries / authorities:



Germany
Elastomer Guideline
DVGW W 270



United Kingdom
WRAS
(acc. to BS6920)



France
ACS



USA
FDA (CFR 177.2600)
NSF 61



China
National Food Safety Standard (CFDA)
GB 4806.1-2016 / GB 4806.11-2016
GB 9685-2016 / GB 31603-2015



Level Sensors

Level sensors for the level and depth measurement in water and other liquids have been produced by SUCO in numerous variations for decades and are used worldwide. Level sensors are suitable for depth measurements up to 500 m as well as for small filling heights less than 1 m.

SUCO provides a wide range of products for drinking, salt or grey water, numerous versions with extreme small diameter as well as versions with sludge platform.



Salt water



Grey water

Flush connectors

Pressure transmitters with flush connectors avoid dead spots. These transmitters are ideal for food applications, ultra-pure water or steam sterilization. We also offer various flush connectors for slurry handling, manure or grey water.

Materials

A wide selection of housing and seal materials allows the customization of SUCO pressure switches and pressure transmitters to the specific media and environmental requirements. Thus we offer products made of seawater-resistant stainless steel, high-grade steel for grey water and approved materials for drinking water, as well as brass housings for cooling and industrial water applications. A selection of available materials: SAE 316L, Titanium, Brass, Hasteloy, Inconel.



Industrial water



A solution for every

application



Level sensors for level measurement



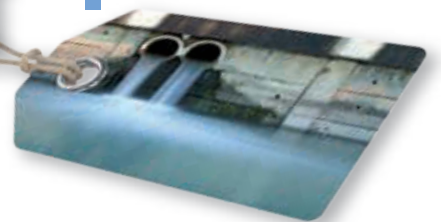
Pressure transmitters with flush connector.
Application: Manure



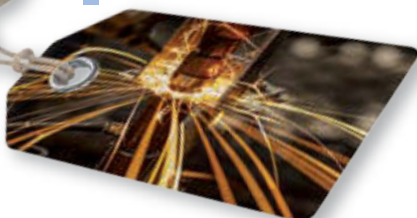
Pressure switches for water supply monitoring to prevent machine damage.
Application: Protection of machines for drinking water



Pressure transmitters for water recycling



Mechanical pressure switches for monitoring the minimum pressure of cooling water.
Application: Welding machines



We are represented in more than 60 countries

w w w . s u c o . d e

Find our worldwide sales network on the internet



SUCO Robert Scheuffele GmbH & Co. KG

Keplerstrasse 12-14
74321 Bietigheim-Bissingen
Germany

Phone +49(0)7142 | 597-0
Fax +49(0)7142 | 597-19
E-Mail: info@suco.de



Our British subsidiary ESI Technology Ltd. has been producing a broad range of reliable and high precision pressure sensors and transducers for water applications for decades.

