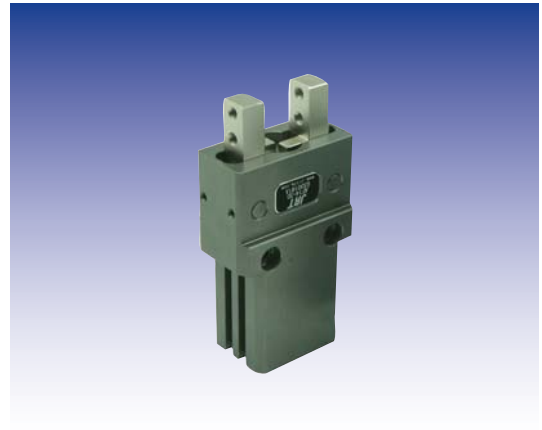


Gripper

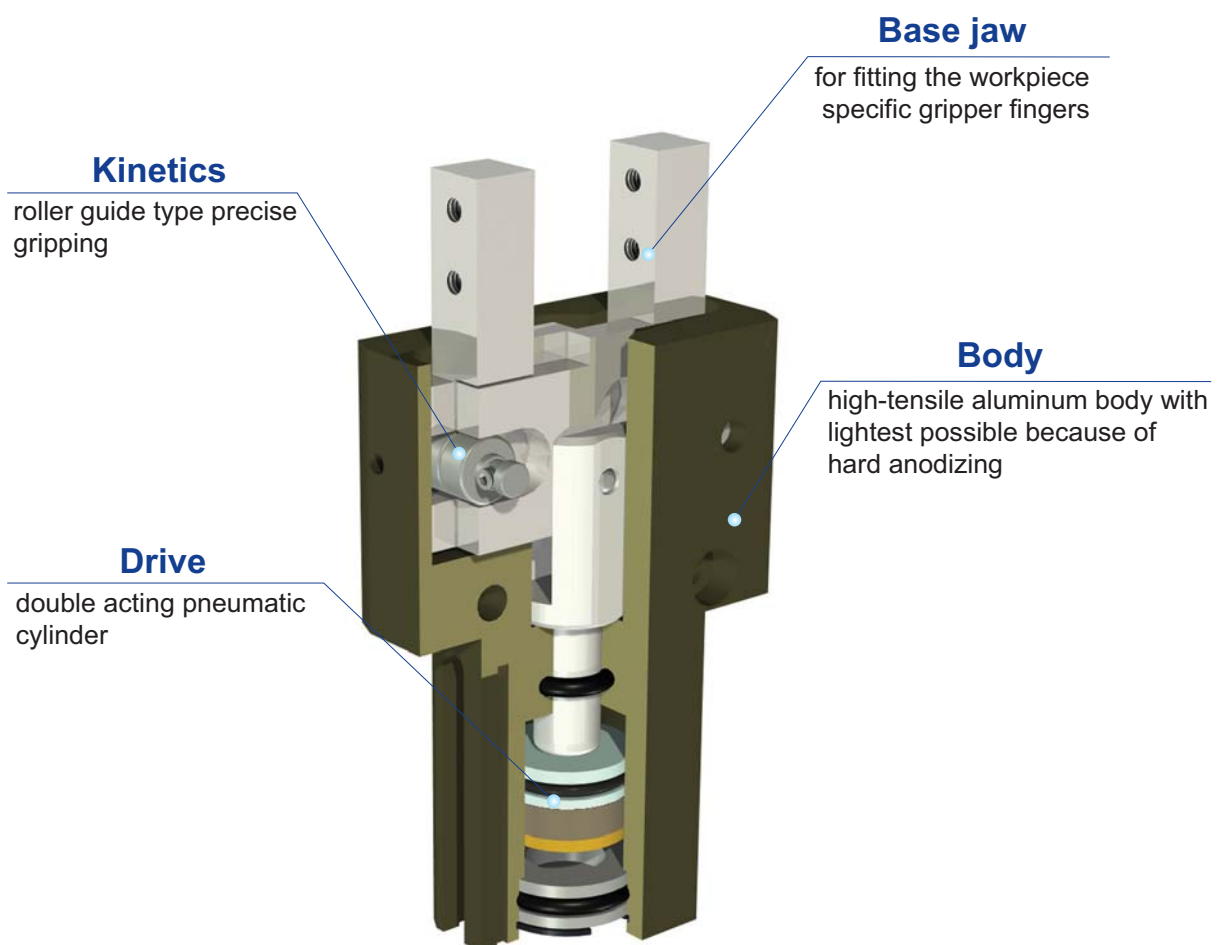
AF14-20,30

Character

- Roller way & Roller type
- High precision & strength structure
- Easy to mount many grippers(compact body)
- Magnetic sensor is available for open-close sensing

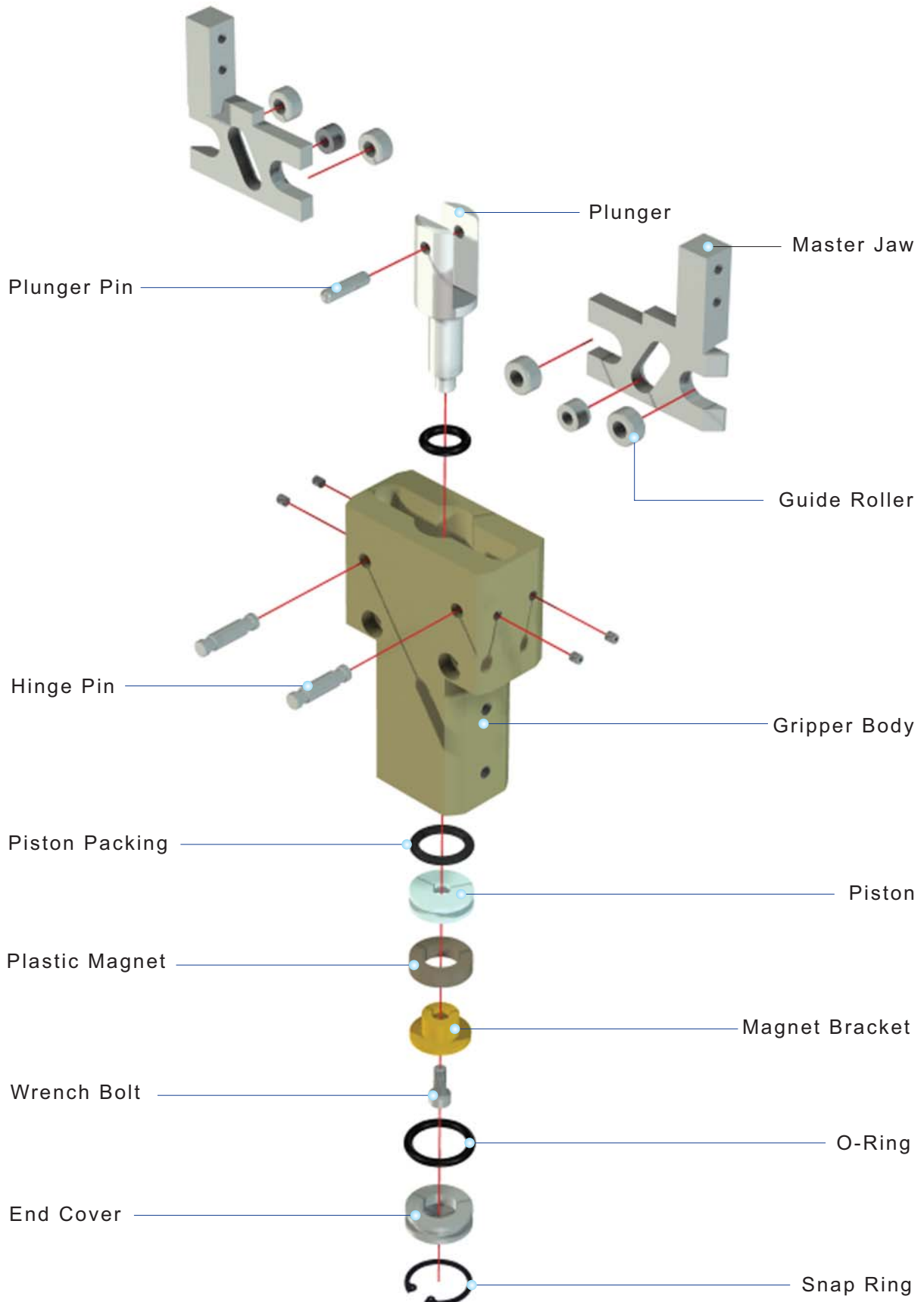


Roller & roller way type



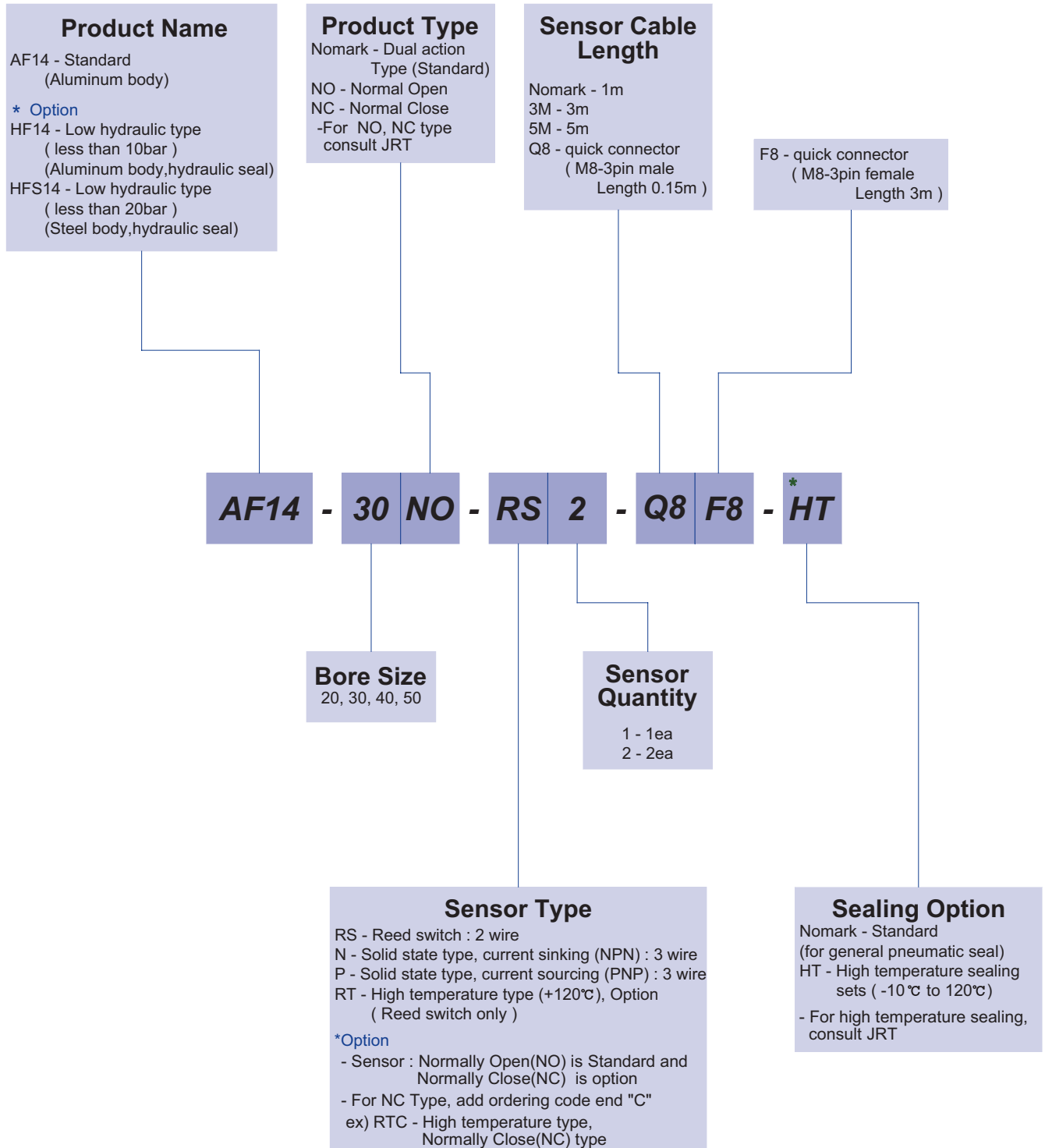
AF14

Exploded view



AF14

Ordering Code



The delivery of * mark option is longer than a standard, So inquire of JRT

AF14

Specification

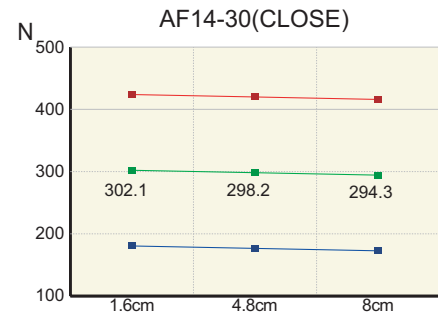
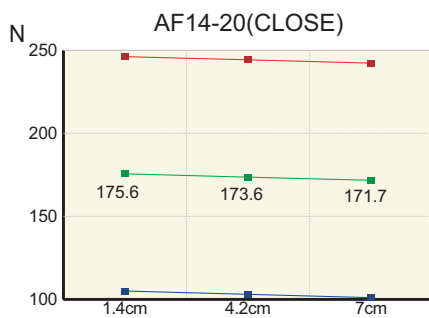
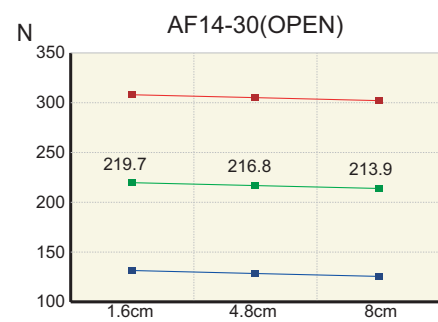
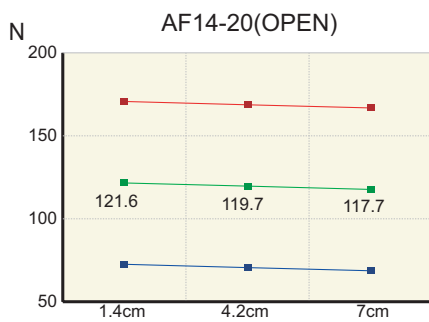
P=Air Pressure[bar] , L=Exertion length[mm]

Products Name	AF14-20	AF14-30	Unit
Stroke	10	12	mm
Weight	0.38	0.72	kg
Max. length of attach	70	80	mm
Fitting size	M5	PF(G) 1/8	
Gripping force:Open	24.53(P-0.003L)	44.15(P-0.002L)	N
Gripping force:Close	35.32(P-0.002L)	60.82(P-0.002L)	
Air consumption per cycle	5.5	14.6	cm ³
Closing / Opening time	0.01 / 0.01	0.01 / 0.01	sec
* Repeat accuracy	0.01	0.01	mm
Max.cycle per minute	60	40	
Operating pressure	3~7		bar
Ambient temperature	-5 to 60		°C
Lubrication	Needless		

* After 100 consecutive strokes to end positions

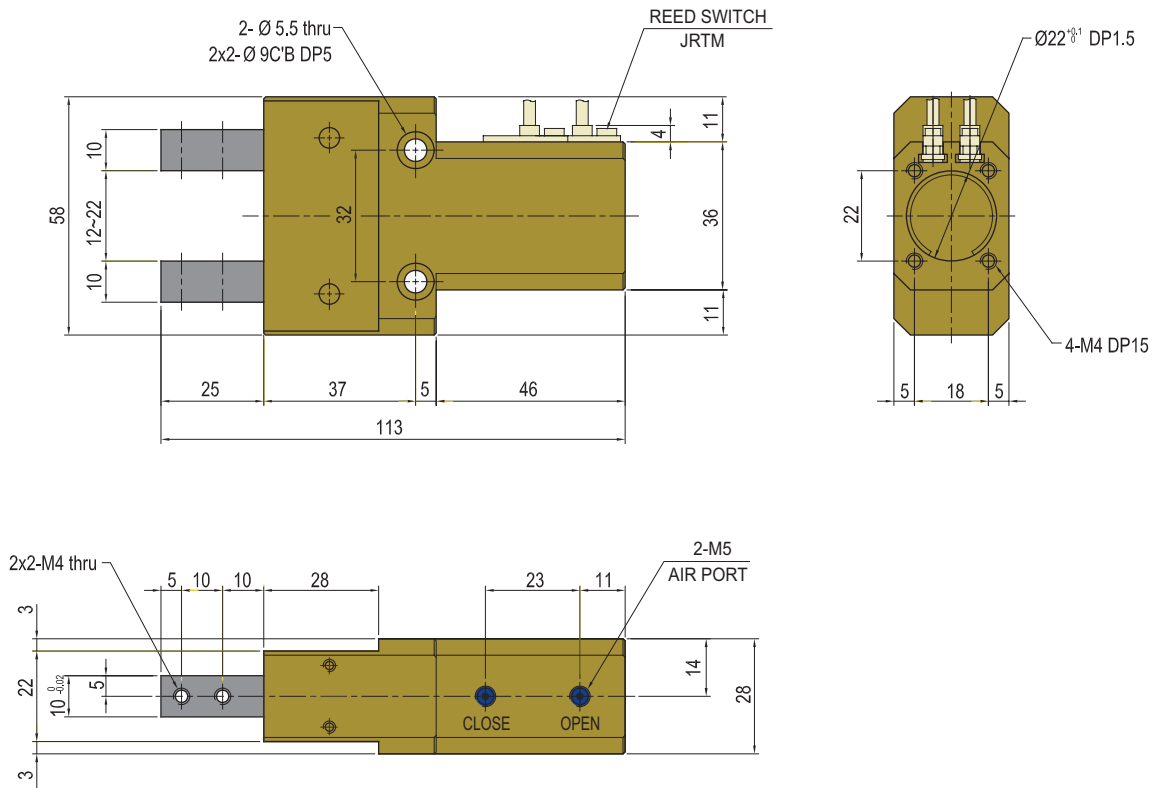
Gripping Force per exertion length

Legend : ■ 7[bar] ■ 5[bar] ■ 3[bar]

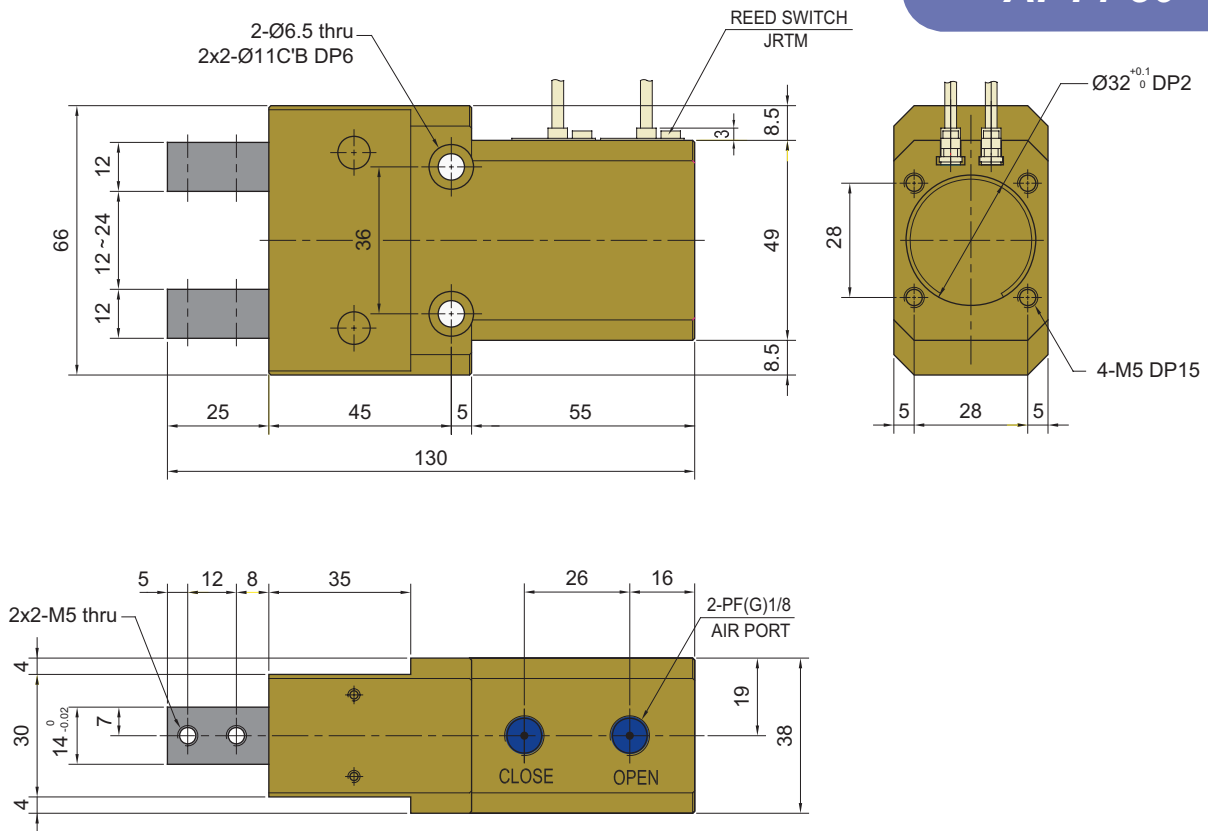


AF14

AF14-20



AF14-30



Notes

A large grid of dashed lines for writing notes, consisting of 20 columns and 30 rows. The grid is contained within a rounded rectangular border.