



Manual rack presses
from 200
to 5,000 kg



Power available depending on the force applied to the lever arm

Manual rack presses	2HR	3HR	4HR 4HRLP	14HR	18HR	50HR
Static power exerted on the lever in kg	Power restored by the press in the direction of the slider in kg					
5	35	60	90	110	190	350
10	75	120	180	220	380	700
15	110	180	270	330	570	1050
20	150	240	360	440	760	1400
25	185	300	450	550	950	1750
Maximum permitted power by the press	200	400	600	1400	1800	5000

1 - Manual rack presses from 200 to 600 kg

2HR - 3HR - 4HR - 4HRLP

Rack presses

The power is linear and constant over the whole travel according to the applied load on the lever.

These presses are robust, accurate, flexible and ergonomic. These are frequently used for assembly, connections of rings or bearings, small forms, various crimping operations, etc...

- *Slider adjusted and locked for rotation, ensuring longevity and precision.*
- *Automatic raising of the slider by spring (adjustable tension, except 2HR).*
- *Quick and reliable adjustment of the clear height.*
- *Accurate adjustment of bottom dead center by a mechanical stop ensuring the repetitiveness of the cycle.*
- *Adjustment of the starting position of the lever in order to optimize ergonomomy of the press.*
- *Base support and press head made of FGL 250 cast iron, thus ensuring robustness and rigidity.*
- *Predisposition for fixation on a bench.*
- *No maintenance, no greasing.*
- *Paint: Frame in sky blue, RAL 5015
Tête Gris Platine RAL 7036.*

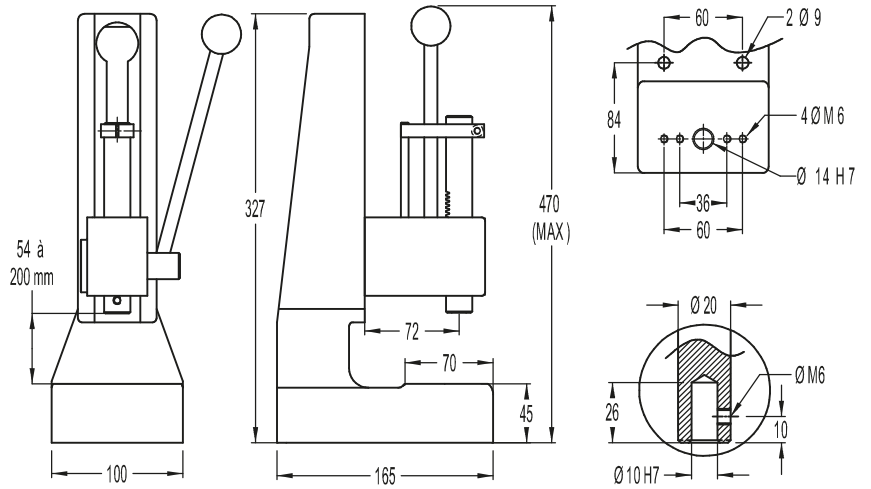


Technical characteristics:

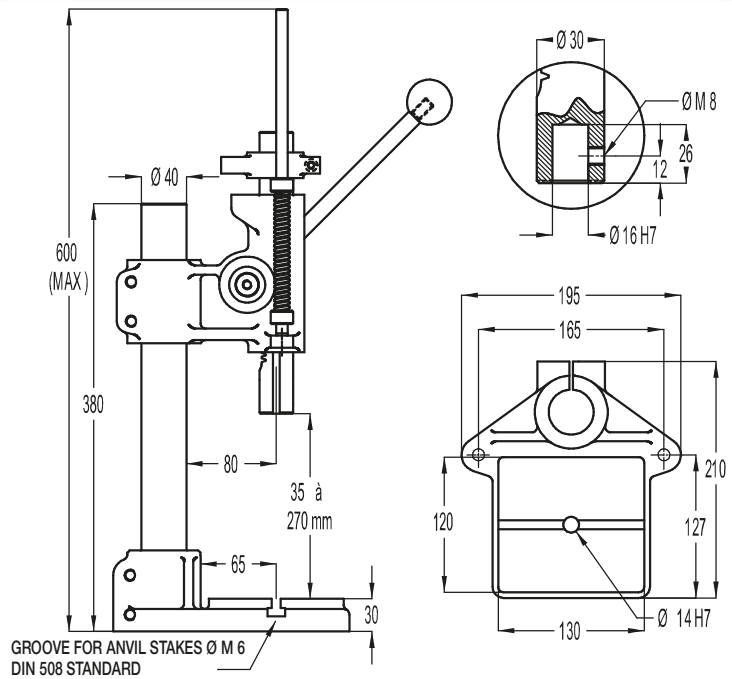
	2HR	3HR	4HR	4HRLP
Power (kg)	200	400	600	600
Travel (mm)	0 to 50	0 to 80	0 to 100	0 to 100
Adjustable clear height (mm)	54 to 200	35 to 270	46 to 280	30 to 400
Swan-neck depth (mm)	72	80	95	155
Angle of rotation per mm of travel	4°58	4°02	3°37	3°37
Slider bore (mm)	10H7 x 24	16H7 x 26	16H7 x 26	16H7 x 26
Table bore	14H7	14H7	14H7	14H7
Table (mm)	100 x 70	130 x 120	160 x 145	210 x 220
Weight (kg)	8	17	25	40

1- Manual rack presses from 200 to 600 kg

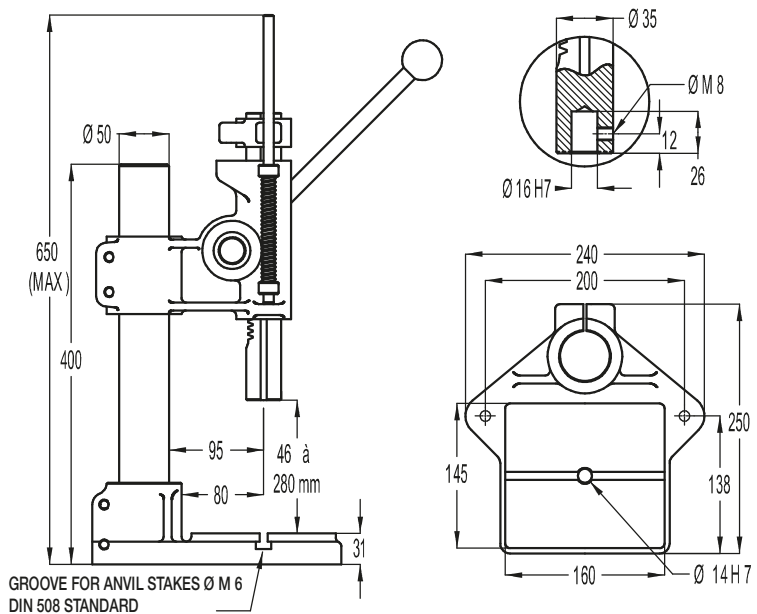
2HR



3HR



4HR



> Options

• Counter

5 digit counter with reset function..



• BDC micrometric adjustment

Bottom dead center adjustment system, graduated after every 0.02mm.



• Quality control by force and/or displacement sensors

EMG proposes management solutions regarding force and/or displacement thanks to its force and displacement sensor solutions which can be adapted as per the requirement for a 100% control.



• Anvil stakes

Set of 2 anvil stakes for securing the tools in T slots.



• Collet

Collet chuck with ER25 collet for $\varnothing 1.5$ to $\varnothing 16$ mm shank (\varnothing to be selected).



• Capstan: travel + 100 mm, clear height increased

For bigger parts, possibility to increase the 100 mm travel (on the 4HR model), change the column to increase the clear height and replace the level by a 3-arm capstan.

4HR press with 200mm travel, clear height +600 mm and 3-arm capstan.



• Non return system

Non return system : does not release the lever until the end of travel (ensures complete and repeatable execution of the operation).

Working stroke : from 0 to 70 mm for 3HR press, from 0 to 83 mm for 4HR press.



• Press version zinc/nickel plating

Laboratory press fully zinc-plated and/or nickel-plated. These treatments are most commonly used in the world of anti-corrosion. It is to take advantage of their exceptional properties to protect a part against external aggressions. Ideal for using the press in "salt mist" environments or to avoid pollution in a laboratory by painting and/or standard lubricating of our machines.



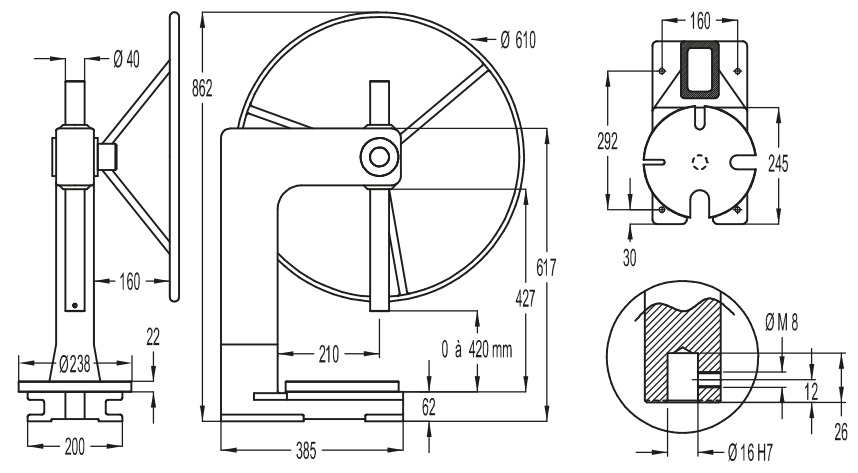
Additional options

- On request: special bores, press head only.
- Special RAL paint.
- Locking of the press head on the column for rotation.
- Engage the press when in position and release by lever.
- Special services on request (press modifications, small tooling and fitting).

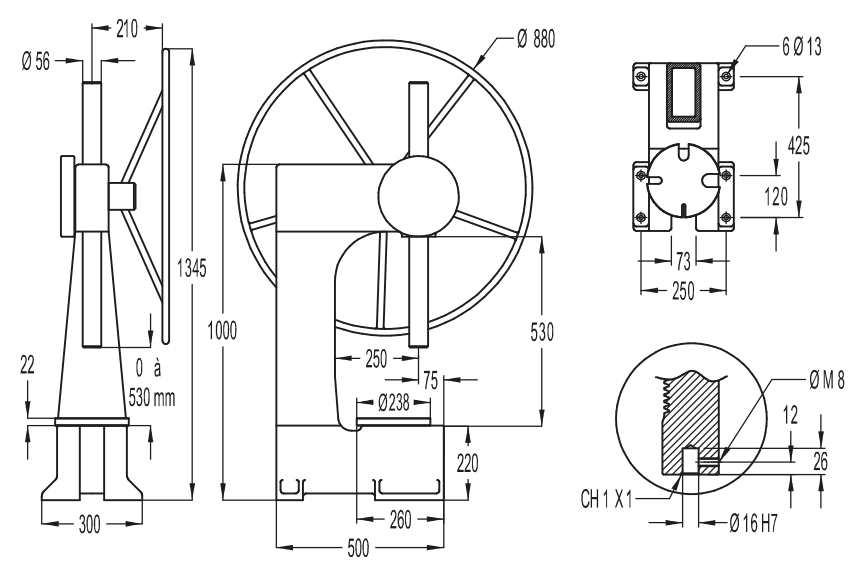


2 - High force capacity manual rack presses

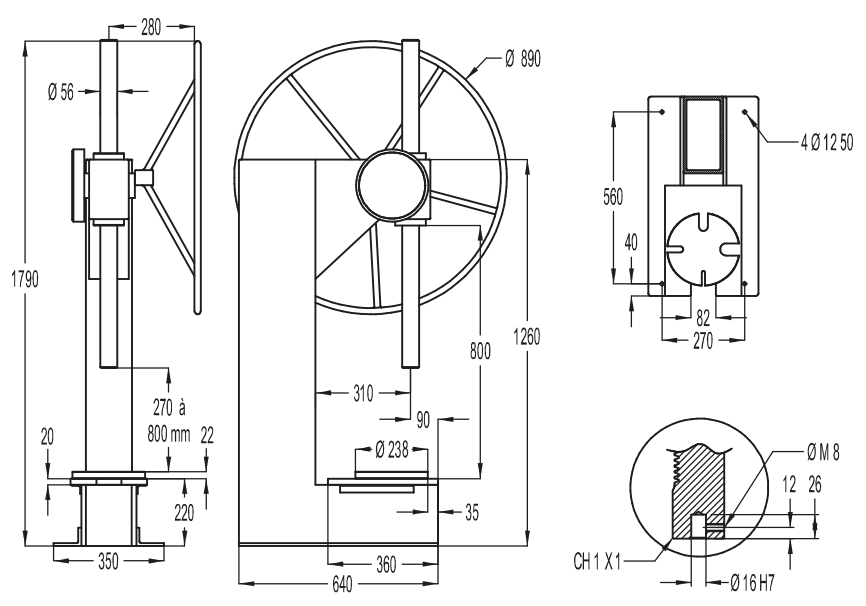
14HR
18HR



50HR



50HR LP



2 - High force capacity manual rack presses

14HR - 50HR - 50HR LP

Rack presses

The power is linear and constant over the whole travel according to the applied load on the capstan.

These models complete the range of rack presses. These presses, strongly built, propose significant power throughout the travel thanks to the high quality tempered steel pinions.

These models are used for assembly, connections and deep fitting, especially for applications requiring a significant travel and/or a significant clear height.

- **Control by 3-arm capstan or wheel.**
- **Slider adjusted and locked for rotation, ensuring longevity and precision.**
- **Tempered steel pinion.**
- **Cast iron or mechanically welded frame ensuring robustness and rigidity.**
- **Option for fixation on a bench.**
- **Removable circular table.**
- **Maintenance by grease nipple.**
- **Sky Blue paint - RAL 5015.**



+
of stroke
+
of clear height
+
of swan-neck

Technical characteristics:

	14HR	18HR	50HR	50HR LP
Power (kg)	1 400	1 800	5 000	5 000
Travel (mm)	0 to 420	0 to 420	0 to 530	270 to 800
Clear height (mm)	420	420	530	800
Swan-neck depth (mm)	210	210	250	310
Angle of rotation per mm of travel	2° 86	2° 86	12° 74	12° 74
Slider bore (mm)	16H7 x 26	16H7 x 26	16H7 x 26	16H7 x 26
Table (mm)	240 x 200	240 x 200	210 x 250	250 x 360
Table recess (mm)	55 x 90	55 x 90	70 x 120	82 x 115
Ø rotating table	238	238	238	238
Weight (kg)	45	50	145	145

Additional options

- *On request: special bores.*
- *Special RAL paint.*
- *Travel end stop.*
- *Special services on request (press modifications, small tooling and fitting).*

