

## 2" Flap Valve Diaphragm Pump D501AN-HV-FL

780 l/min



Max Flow

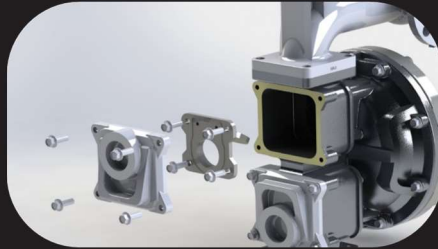
85m



Max Head



No need to remove a pump from installation for service or cleaning



YTS High Performance Looped C<sup>®</sup> Air Spool Valve

### Pump applications:

Meat waste ♦ Poultry waste ♦ Fish waste ♦ Nuts ♦ Dried fruits ♦ Pet foods ♦ Leaves ♦ Trash ♦ Rocks ♦ Sand ♦ Solids ♦ Sludge

- ⇒ Flap valve design permits passage of soft solids up to 50mm (hard solid maximum size - 30mm)
- ⇒ Easy access to valve chambers
- ⇒ Quick removable flap valves
- ⇒ Fully non lubricated Air-Valve
- ⇒ Top suction / bottom discharge design keeps solids from settling in pump
- ⇒ Short stroke design improves diaphragm life
- ⇒ No dynamic O-rings to replace or repair
- ⇒ Fully bolted construction



COMPARISON	Max Flow Rate	Max Discharge Head
YTS D501 series pump	780 l/min	85m
Competitor NDP series pump	600 l/min	70m

COMPARISON	Flow l/min	Head (m)	Required Air l/min	Required Pressure (bar)	Required Power (HP)	Required Energy (kW)	Energy Savings
Required Flow: 500 l/min							
Competitor NDP pump	500	10	5.000	5	28,78	21,47	73,54%
YTS 501 pump			2.000	2,5	7,62	5,68	
Required Flow: 400 l/min							
Competitor NDP pump	400	20	4.000	5	23,02	17,17	61,85%
YTS 501 pump			2.100	3	8,78	6,55	
Required Flow: 350 l/min							
Competitor NDP pump	350	15	2.500	4	12,57	9,38	72,06%
YTS 501 pump			1.000	2,3	3,51	2,62	
Required Flow: 200 l/min							
Competitor NDP pump	200	20	1.800	3	7,52	5,61	65,78%
YTS 501 pump			700	2,4	2,57	1,92	